

Capturing images in the **dhs Image Data Base** requires not only hardware, but also the support software that can interface with the camera(s). We provide several options for the various image sources.

Image Support for dhs-MicroCam Family:

To interface the **dhs Image Data Base** with dhs digital cameras featuring 1.3 MPix, 3.1 MPix and 5.0 MPix (CMOS) resolution.

Image Support for dhs-MicroCam 3.3:

Interfaces this high-resolution CCD digital camera with our software.

Image Support for Zeiss AxioCam MRc:

Integrates these high-end image sources while using many native features.

Image Support for Nikon DXM1200F:

Connects this 12 megapixel digital camera (uses the native camera driver, but optimises image transfer to the **dhs Image Data Base**).

Image Support for Falcon / Eagle:

For analogue CCD cameras whose images are grabbed using a *dhs Falcon* or *Eagle* framegrabber.

Image Support for dhs-Video Converter:

Driver for the *dhs Video Converter* that serves as an external framegrabber (without having to open the PC) and can be hooked up to FBAS, Y/C and FireWire image sources – especially suited for notebooks.

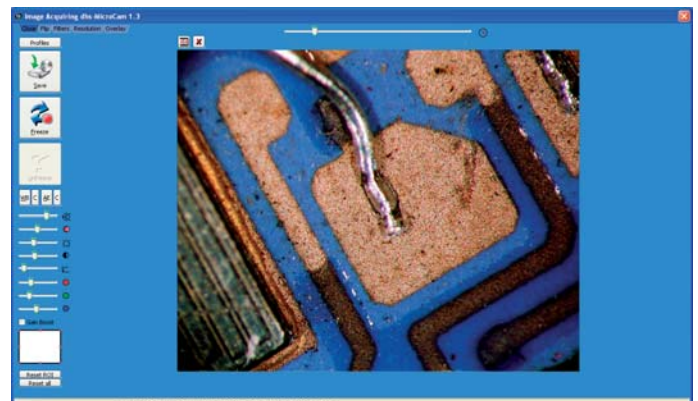
Image Support for Twain:

For interfacing with installed PC peripherals that ship out with a Twain driver (e.g., scanners, digital cameras, etc.).

For all these support programs (except for Twain and DXM1200F, which use their native drivers), we have developed one uniform, easy-to-use software interface with all the popular, important settings that allow you to adjust and optimise the camera image with sliders.

We also deliver useful features such as live image comparison, overlays and interval shooting, not to mention the live image features implemented in dhs modules (e.g., Measurement Tool, Sharpness Reconstruction, Metal Sections).

The **dhs-MicroCam** family offers a slew of features: brightness, exposure time (automatic or manual), contrast, colour saturation, gain, RGB correction, gamma, white balance (automatic or manual), flip, refocus, AVI video sequences, shading correction, crosshairs, selectable sensor section (ROI), and much more! All your settings can be stored as profiles for fast access, so you can switch from one acquisition mode to another with a single click of your mouse.



Live image view in the **dhs MicroCam 1.3** Support programme

Last, but certainly not least: All our support programs – except for *Image Support for Twain* – are offered with **one** group license. You only acquire one license for each workstation, but can still use all these image sources!

For more information about the hardware components you need for the support programs, please consult the individual brochures for the framegrabbers and cameras. Please do not hesitate to contact us if you would like personal assistance in selecting a solution for your needs.

ryf ag

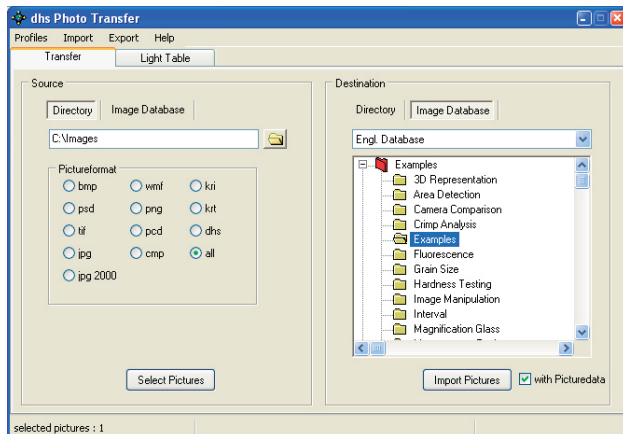


Ryf AG
Bettlachstrasse 2
2540 Grenchen
tel 032 654 21 00
fax 032 654 21 09

www.ryfag.ch

Do you capture images with a digital camera? Do you transfer large quantities of images to or from the **dhs Image Data Base** by CD-ROM, DVD or another method? Do you want to share images among different image data bases? If your answer to any of these questions is yes, the *Photo Transfer* expansion module is right for you!

It supports the import and export of up to 256 images (the maximum capacity of the film strip in the data base) in one quick, convenient step. Gone are the days when you had to transfer every single image individually.

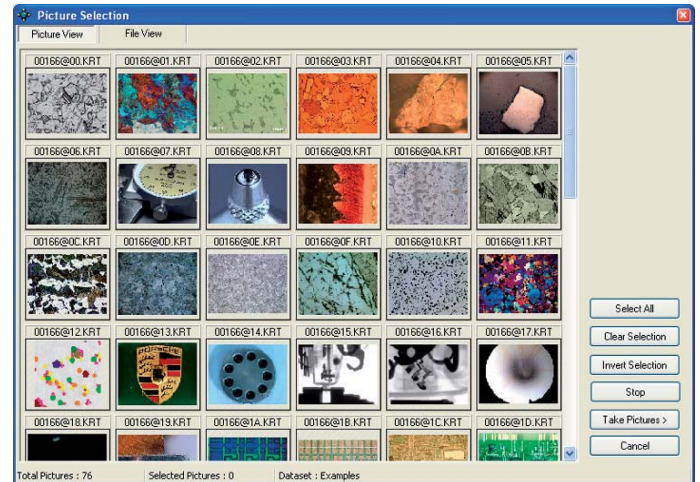


Dialogue box to select the image source and destination for the photo transfer

A selection dialogue box in the *Source* section provides access to all available directories for importing images (including network drives and removable media). Clicking an image here will transfer it to the „light box“, a kind of holding station before images move to their final destination.

We are the first and only provider to offer automatic read-out of „EXIF“ data. „EXIF“ is a data interface used by virtually all digital camera makers to deliver camera data (such as image number, date, exposure time, f-stop, etc.). In an easy-to-use dialogue box, you decide which values should be automatically transferred to which fields in your image data base.

You can also export images from your image data base: just click all the images you want (even if scattered over several datasets in different data bases) in the clearly structured image gallery.



Light box with all the images you selected

Finally, you set the copy destination for all the images in the light box. They can go to another image data base, or to a directory on your computer or in your corporate network. In the latter scenario, you even get to choose a destination file format from standard formats such as BMP, PNG, TIFF, JPG and the new JPG2000 (with selectable compression).

If you copy images from one **dhs Image Data Base** to another, you can also transfer all the image-related data base fields in one easy, hassle-free operation. Even the annotations (calibrations, labels, measured values) for the images can be exported to the new data base.

ryf ag



Ryf AG
Bettlachstrasse 2
2540 Grenchen
tel 032 654 21 00
fax 032 654 21 09

www.ryfag.ch