

The cornerstone and beating heart of the **dhs Image Data Base** is the Basic Module. This object-oriented SQL data base solution delivers exceptional ease of use.

Its pushbutton controls and intuitive drag-and-drop actions replace the complicated menu structures found in rival products. Everything is placed at your fingertips on-screen. With dhs' special *Form Editor*, you can even adapt the forms to your needs, making for an extremely short learning curve.

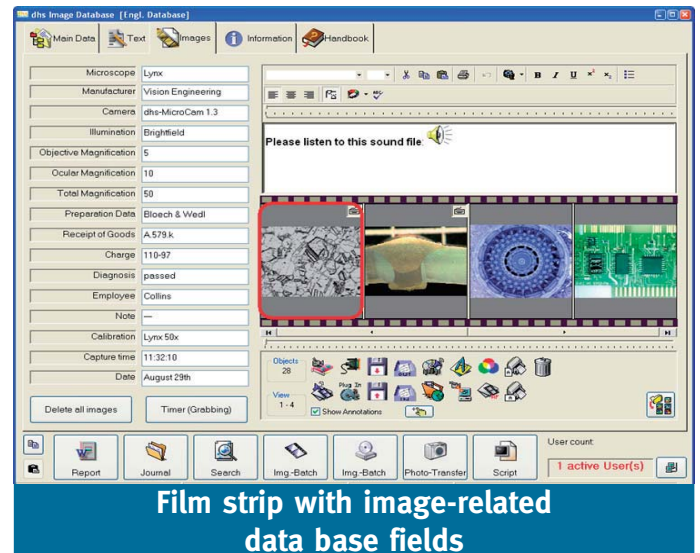
There are many customisable data base fields in the headings (Data, Text, Images). They allow you to simply imprint your working methods and proven organisational structures onto the software. That minimises transition time so you can quickly get back to business as usual. We provide added assistance with sample data bases and a very detailed online help feature (F1-key).

The data base structure is mapped onto a Windows-style explorer tree where you can create any number of folders and datasets, and name them according to your requirements. In the tree, you can also reference files that have some bearing on a given dataset (all data formats supported).

The **dhs Image Data Base** can be used either on individual workstations or in complex network environments. And that's where it really shines, with its no-hassle information interchange, flawless MS Office™ interface (Word, Excel, Power Point, Outlook, etc.) and user-friendly licencing.

dhs also offers a *Licence Server* expansion that manages your installations with floating licences – the perfect solution for tight budgets! And the software supports all current Microsoft Windows™ operating systems, of course (incl. Vista™).

The built-in *dhs Configurator* provides extensive customising options such as language (English/German), user permissions and basic in-house configurations. You can even run several data bases at the same time.



We are the first software maker ever to allow you to programme your image data base free of limitations. You can customise your own data base (with a developer version) or have our experienced developer team do it for you. For more information please consult the brochure for *Custom Programming*.

Thanks to its extensive support for all kinds of image sources (analogue and digital cameras, scanners, external disk drives, SEM etc.), multi-media capabilities (audio and video) and current selection of over 20 extension modules for a wide variety of applications, the **dhs Image Data Base** is the no. 1 solution for a growing circle of clients in manufacturing, industry, quality assurance, materialography, biomed, research, criminology, etc. etc. etc.

ryf ag



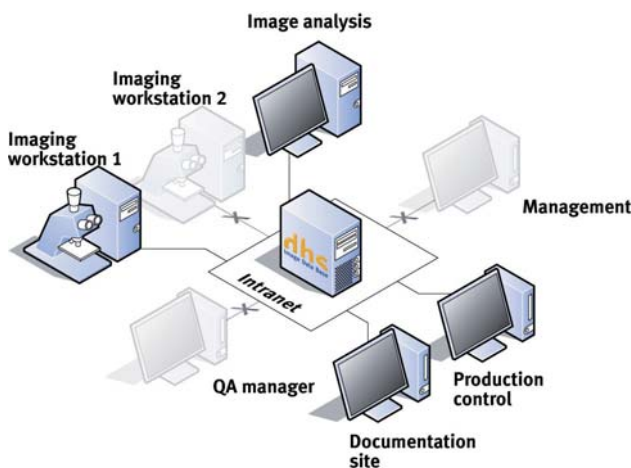
Ryf AG
Bettlachstrasse 2
2540 Grenchen
tel 032 654 21 00
fax 032 654 21 09

www.ryfag.ch

As you probably know, the **dhs Image Data Base** runs flawlessly not only on individual workstations, but also in complex networks where digital imaging integrates with in-house intranet solutions.

So what you need is a highly flexible, continuously adaptable licence for all the basic and expansion modules. That is the surest way to deploy your new imaging application effectively across your enterprise.

That is what our data base philosophy is all about: supplying large user groups with images and text information. To meet these demands, we developed the *dhs Licence Server* – a useful, cost-effective and intelligent user and licence management system for both users and administrators.



One possible licencing configuration with the dhs Licence Server

The basic idea is simple: while many different employees use the image data base regularly, only a small fraction of them access the application simultaneously. Experts call this situation „concurrent licences“.

Our *License Server* supports the use of floating licences to manage licences and access permissions (this is also why we at dhs have upgraded our software licencing system by replacing dongles with a modern hard drive keycode).

Now, instead of having to buy one licence for every software user, you can have several workstations share the licences in your corporate network licence pool.

It's much easier now with the *Licence Server* to share informations between employees, departments or branches. And you get common access to central stored databases within your network environment – for transparent order of events and results.



If a user is working on a specific dataset, it's protected to unwanted alterations from other colleagues during this time. With an integrated user management you are able to contact such users directly in your network area and communicate with them. In a very easy and convenient way you can send short messages, e.g. to close a unintentional blocked dataset.

To use the Licence Server, you need the following:

- Windows operating system on the server computer
- Technical considerations prevent the server computer from being accessed through a firewall

Any questions? Please don't hesitate to contact us!

ryf ag



Ryf AG
Bettlachstrasse 2
2540 Grenchen
tel 032 654 21 00
fax 032 654 21 09

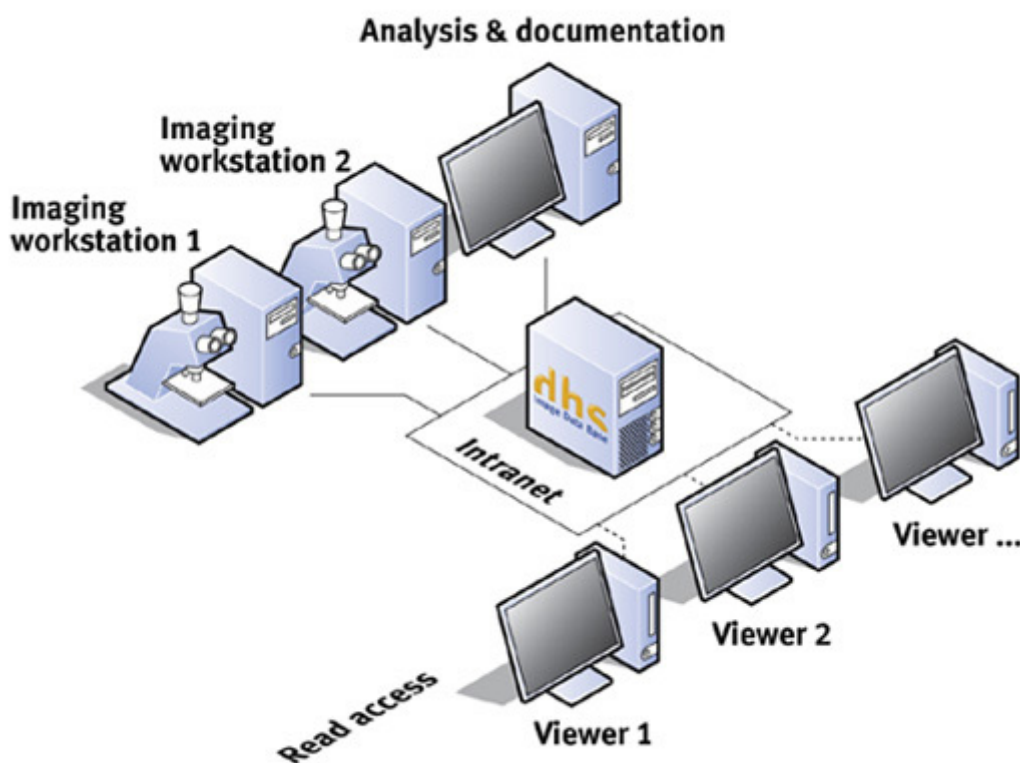
www.ryfag.ch

DHS Software: Archiving / Viewer

Viewer

An inexpensive way to provide information in-house. Viewer licences grant authorised individuals read access to your data base(s). The write protection prevents information from being accidentally modified or deleted (images can be printed using the clipboard and the direct-print function). Available in three licence configurations: up to 5 workstations, 6 to 15 workstations, more than 15 workstations.

The Viewer module allows authorised persons a reading access to your database(s)



DHS Image Data Base

A sophisticated, but easy-to-use system.

The **dhs Image Data Base** is a modular imaging programme used in both stand-alone and complex network applications. With several thousand installations, this is one of the best-selling products around. It is utilised the world over because of its multi-language support and use of universal standards (in terms of operating systems, servers, office applications etc.).

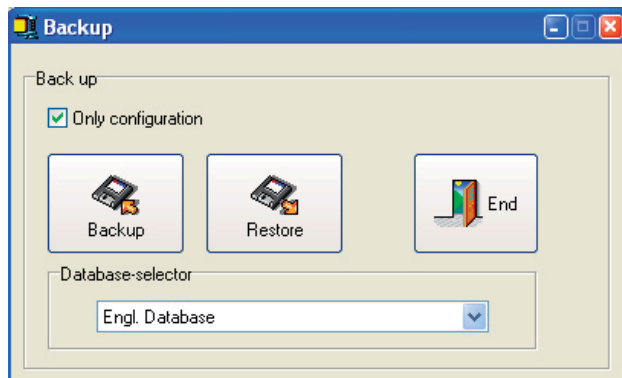
One of the software's main selling points is its outstanding ease of use. Fast implementation, excellent adaptability to existing organisational structures and IT environments, short learning curves and accessibility for PC experts and novices - that adds up to enormous advantages for you. Once you start using the application, you will see its other benefits as well: automation of routine tasks, perfect reproduction and communication of analyses and test results, lower costs, time savings and an easy-to-operate data base. In addition, dhs is the only provider to offer full product programmability, creating unprecedented customisation opportunities! www.ryfag.ch Ryf SA / Ryf Ltd. November 2009.

As the name says, the Back-ups / Remote Storage module provides two vital functions:

First, it quickly and conveniently backs up all your data. You can save the back-up data (text data, images, multimedia objects) to any directory on your system, or to external media such as CD-ROMs, DVDs, MO disks or ZIP disks.

If you use several data bases, the data base selector will provide a pull-down menu for you to select a data base to back up.

So if you lose some vital data, you just run the „Restore“ function to reinstate the entire data base at one keystroke. This is one essential feature you won't want to do without.



Creating and restoring back-ups of your dhs Image Data Base

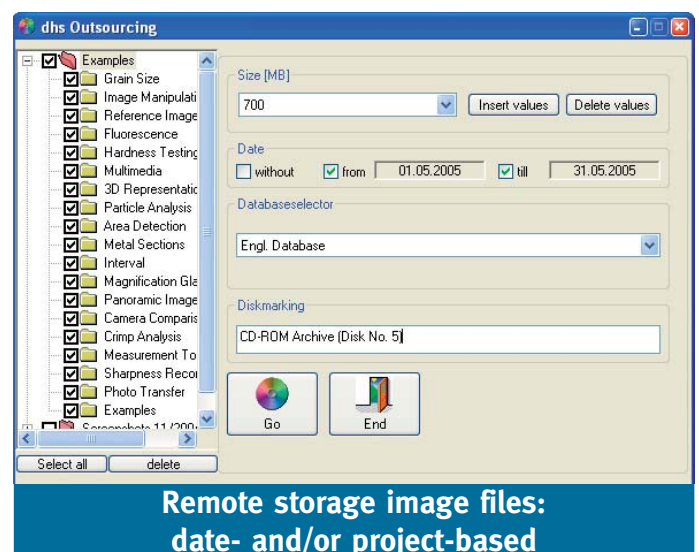
The second aspect – remote storage – is a perfect complement to the back-up function.

Image files take up enormous amounts of storage space – especially so since the advent of ultra-high-resolution digital cameras. Some of these files require 50 or 60 MByte per image.

Although modern PCs have extremely large hard drives, the workstation running your **dhs Image Data Base** will eventually be weighed down by these large image files and begin to lose speed.

To prevent this, you can transfer your images to external drives or to a data server. The entire remote storage process is far more involved than just deleting the files – it is an intelligent referencing operation!

You can outsource on a folder-by-folder or dataset-by-dataset basis: just put a checkmark in the data base explorer tree next to the images you want to outsource. For added convenience, you can select the images based on specific dates (Date captured „from“ and/or „till“).



Remote storage image files: date- and/or project-based

To ensure that your storage space is used as efficiently as possible, you can pre-set the size of your storage medium.

Thanks to this innovative solution, the image thumbnails (used in the film strip and the various galleries within the software) and all the associated text information can remain in the data base for later searches, each with their own unique outsourcing reference.