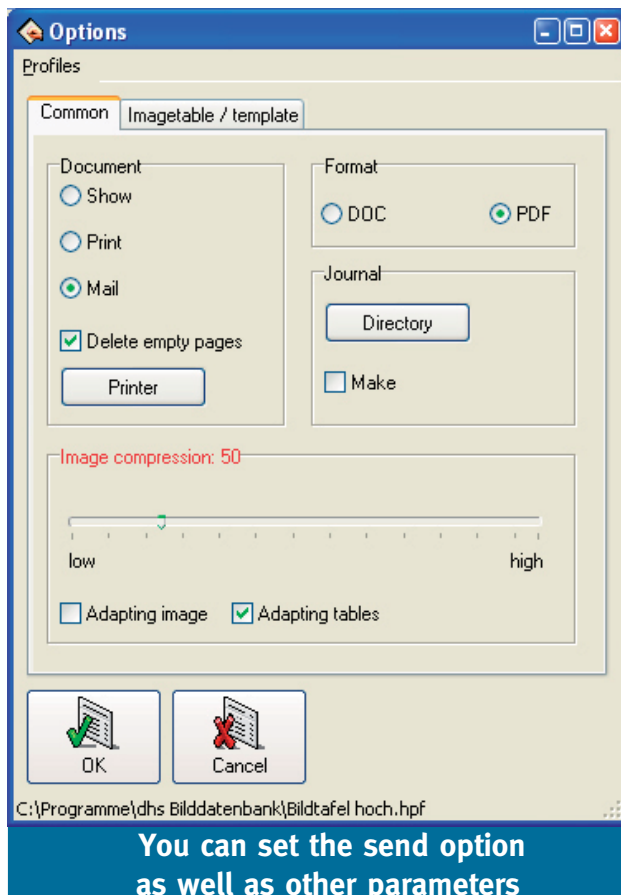



Today's world is driven by communication and information. Collaboration between customers and suppliers, or even between remote production sites, is intensifying, accelerating and gaining in importance.

In order to meet this challenge, you need a workflow that begins and ends within the **dhs Image Data Base**. That's why we developed the *Communication* module.



It provides two key features: first, you can eMail images right out of the data base film strip. Second, if you've licensed the *Automatic Reporting* module, you can also electronically distribute entire reports over the Internet and your own intranet.

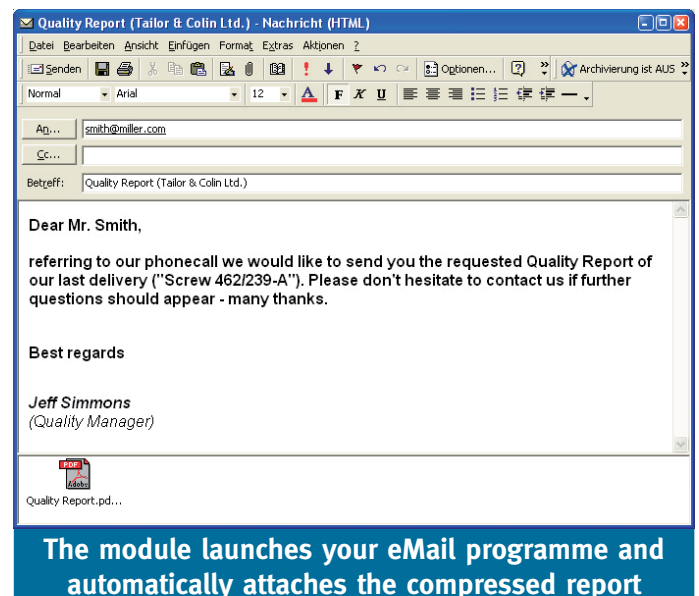
eMailing images is simply a matter of dragging this icon  onto the image in the film strip.

Your eMail software will automatically open, we compress the image,

convert it to a JPG file and attach it to the eMail – all without you having to lift a finger. You just have to enter the recipient and add your message. Talk about quick and easy.

This fast, convenient approach works with entire reports, too. Simply access the Options dialogue box in the *dhs Automatic Reporting* module and select the „Mail“ radio button (see figure to left). You decide whether the report images should be compressed and what format the report should have:

- As a *.doc file (in the original Word™ format)
- As a *.pdf file (in Acrobat Reader format)



No matter what your settings are, the module first generates a Microsoft Word™ report. The person receiving the report doesn't need any special software or even a **dhs Image Data Base** – just Microsoft Word™, which is widely used throughout the world.

PDF file use is also on the rise, since PDFs can be read using the free *Adobe Acrobat Reader™*. However, to generate the report you need write rights, for example with the *Win2PDF* programme, distributed by dhs. In addition: You need a MAPI interface to run this module.

ryf ag

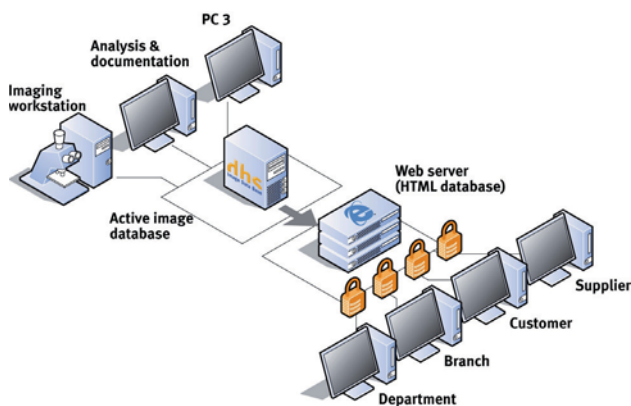


Ryf AG
Bettlachstrasse 2
2540 Grenchen
tel 032 654 21 00
fax 032 654 21 09

www.ryf.ag.ch

The *dhs Web Server* is the perfect way to quickly and conveniently communicate with the **dhs Image Data Base**. It provides an ideal tool for making data – whether images or texts – easily available to the largest possible user group.

The image data base software was adapted to HTML programming so you can create an „internet-ready copy“. To view the images and texts, users only need a standard Internet browser (Microsoft Internet Explorer™ etc.) – no special viewer software is required!



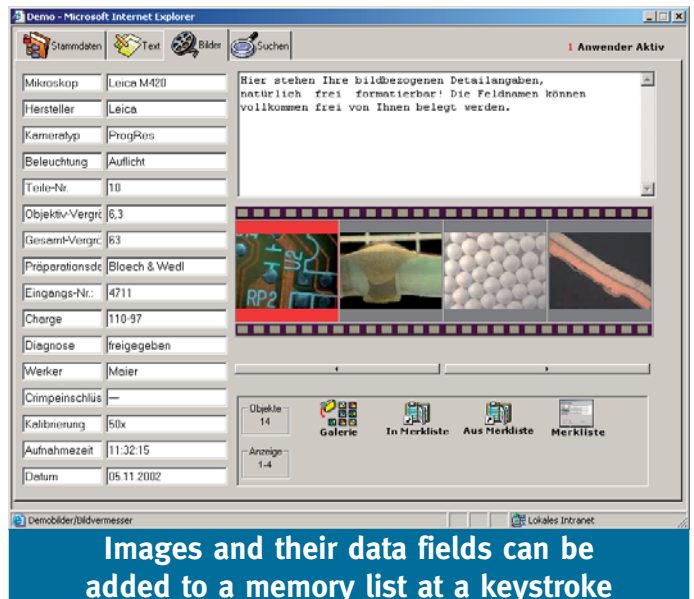
One possible configuration with the dhs Web Server

This „Internet data base“ looks much like our normal **dhs Image Data Base**, and offers the same search features. Since users have read-only access, you can prevent unwanted changes from being made to your data stocks.

As an extra feature, the *Web Server* includes a „memory list“. You add images and image data to the list and then download them as *.JPG, *.BMP or HTML files. Or, you can simply e-mail them.

That puts your company's communications on a whole new footing: your business partners (customers, suppliers, factory managers, etc.) can access your image data base online from any platform – including Mac, Linux or Unix computers.

The data is accessed online from a hosted data base with content you have approved for publication. A user-administration system manages outside users and even provides optional password protection. That gives you total control over who can view your data. It also opens up plenty of options for providing information in-house – **after all, the *Web Server* can also be set up in your own intranet!**



Images and their data fields can be added to a memory list at a keystroke

Please contact us if you want to know more about the technical requirements and how to deploy the *Web Server* in your own IT environment.

ryf ag



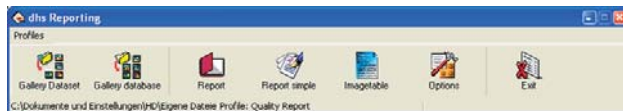
Ryf AG
Bettlachstrasse 2
2540 Grenchen
tel 032 654 21 00
fax 032 654 21 09

www.ryfag.ch

This expansion module is perfect for documenting what you do with the **dhs Image Data Base**.

You can output captured and evaluated images together with the selected text information from the data base to a log, a testing report, a certificate or any other documents. All the reports are based on the international standard in word processing, Microsoft Word™.

These MS Word™ documents are automatically generated using a form known as a *Word template* (*.dot file). We provide a specially developed tool to help you create your own personal templates. You will be able to generate templates within minutes, even if you're a relative newcomer.



This toolbar allows you to select images, generate reports and image tables and configure your settings under „Options“

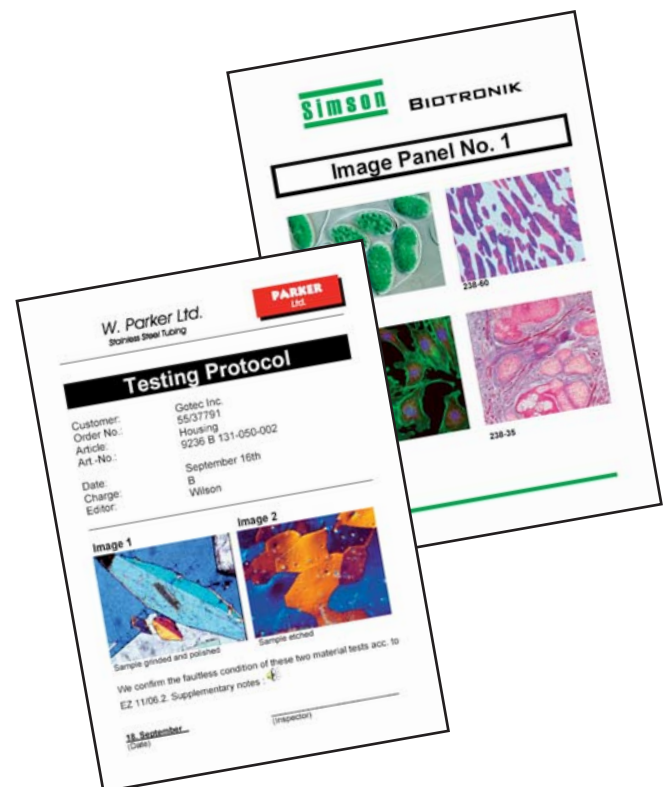
Then, when it comes time to generate the actual report during your regular work day, you can decide whether to access images from the current dataset or from the entire data base. After selecting the images in an easy-to-navigate gallery, you can decide which of your forms will be used to automatically generate the document. The report can be displayed on your screen, printed out immediately or sent straight out to your client or supplier by eMail (requires the dhs module *Communication*).

Another useful feature is our magnifier, which blows up portions of your current images. With digital zoom factors as high as 5x and auto-adjusting scale bars (requires image calibration), you can create captivating representations of key image details in very little time.



Magnification glass function to show image details in an impressive way

This module offers you other useful features such as continuously adjustable image compression, an image table generator with standard enlargements, PDF support, user profiles and considerable time savings.



ryf ag



Ryf AG
Bettlachstrasse 2
2540 Grenchen
tel 032 654 21 00
fax 032 654 21 09

www.ryfag.ch