

Digital - FOV measuring projector Ryf-Chotest Set RVX1060

Visual inspection has never been so easy!



Measurement at the touch of a button $\pm 0.1 \mu\text{m}$

The digital optical coordinate measuring systems / measuring projectors from Ryf-CHOTEST enable high-precision part measurements at the touch of a button. The procedure is very simple and the measurement can therefore also be carried out by untrained personnel.



Digital - FOV measuring projector Ryf-Chotest Set RVX1060

The optical measuring machines of the FLASH 'RVX' series are characterised by their high measuring speed. They are able to analyse hundreds of unaligned parts in just a few seconds.

This incredible ease of use allows untrained to untrained personnel to analyse in a few seconds.

Thanks to an advanced **telecentric lens system**, the FLASH machines offer an extremely large 2D view, sharp images, optimal contrast, without distorting the image and still ensuring a high depth of field. The combination of the two **ultra-high-resolution CMOS sensors** and **innovative deep learning algorithms** enables precise visualisation and analysis of even the smallest defects or deviations. Even the smallest and most difficult to detect deviations or errors can be visualised and analysed.

Both models are equipped with two LED lights. The large segment ring LED (4 segments in incident light) is permanently mounted.



RVX1060 / RVX1100

Digital - FOV measuring projector Ryf-Chotest Set RVX1060

Flash VisionX Measurement software

The new reference for measuring your parts using DXF/PDF comparison:
Precise, fast and super simple at the touch of a button!

The innovative 'VisionX Pro' measuring programme enables geometries and their elements to be captured with just a few clicks, without coordinates, by means of image analysis and the simultaneous creation of measuring programmes.

Automatic measurements can then be carried out at the touch of a button without aligning the parts.

In the programming phase, the software fully guides the user by always suggesting the automatic focus and lighting functions to select the best possible view.

The results are displayed with clear OK and NOK/NG indicators according to the set tolerances.

The PRINT button can be used to create an instant report in PDF format.

Thanks to the different user access levels, the control can also be entrusted to inexperienced operators and is done in a few moments with a simple press of the measurement button.

Ryf-RVX1060 / RVX1100 FOV Set (Ø 60mm / Ø 100mm)

Camera sensor:	20 MPx, CMOS Cameras
Lens type:	Double telecentric high-end lens
Software:	VisionX
Resolution:	± 0,1 µm
Repeatability:	± 1,0 µm bei Ø 60mm / ± 2,0 µm bei Ø 100mm
Measuring accuracy:	± 3,0 µm bei Ø 60mm / ± 4,0 µm bei Ø 100mm
Measuring accuracy with stitching:	± (2+0.02L) µm / Large field of vision = ± (4+0.02L) µm
Field of vision -FOV Area in the Ø:	Ø 60mm (RVX1100 = Ø100mm)
Measuring range in Z:	Z = 35mm
Max. Load:	3 kg
Outer dimensions (LxBxH):	500x280x670mm / Total weight 25kg
Screen:	24 Zoll, XGA 1920x1080
Lighting:	Coaxial LED transmitted light and 4-fold segment incident LED ring light
Automatic calibration:	Quite simply with the large chessboard measuring glass plate
Computer:	HP PC with appropriate graphics cards with WIN11/10 (incl.)
Warranty:	24-month Ryf full warranty with on-site support

(*FOV = Field of View)

www.ryfag.ch

Digital - FOV measuring projector Ryf-Chotest Set RVX1060

There are only very few suppliers worldwide in the field of digital measuring projectors the combination of the simplest handling and sophisticated software. CHOTEST from China is one of the market leaders in this field. The high-tech company supplies its measuring systems to renowned companies such as **Samsung, Heidelberg, Hitachi, ABB, Bosch, BMW, Mercedes, Toyota and VW.**

We are therefore very pleased that we are now responsible for sales and service of the FLASH measuring projectors from CHOTEST as the general agency for Switzerland and the Principality of Liechtenstein. The precision measuring machines of the RVX series are an excellent addition to our product range and strengthen our claim to be your competent partner for CNC measuring projectors as well. SWISS MADE continues to play a key role in our endeavours to provide the perfect overall solution in the fields of microscopy and measurement technology. Numerous accessories and supplementary parts are manufactured in-house in Grenchen/Seeland. In the info brochure you can find out more about our general agency CHOTEST. At the same time show you some examples of customising Made by Ryf AG.

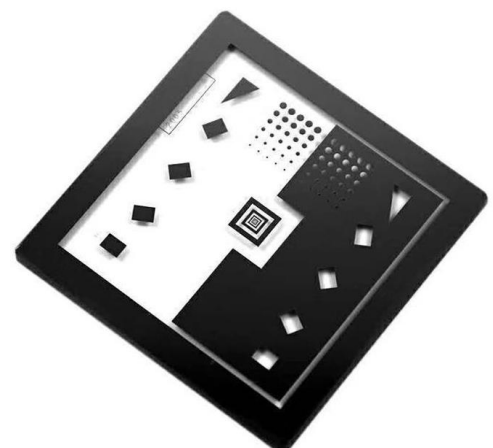
We look forward to hearing from you.

At a glance

- **Self-explanatory operation**
- **Autofocus**
- **Measuring process at the touch of a button**
- **No specialised personnel required**
- **Fast measurement results**
- **Deviations immediately visible**
- **Test report at the touch of a button**



Koaxiale Durchlichtbeleuchtung auf Ø 60mm /100mm



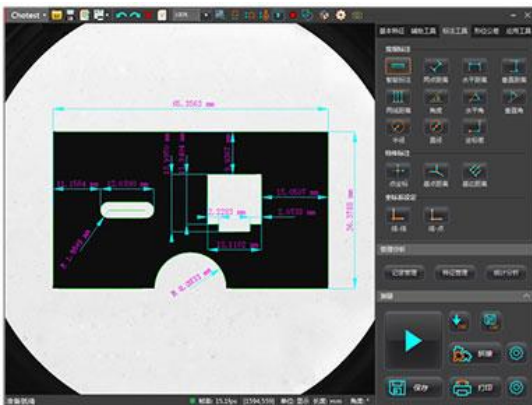
Original Glasplatte zum kalibrieren

Digital - FOV measuring projector Ryf-Chotest Set RVX1060

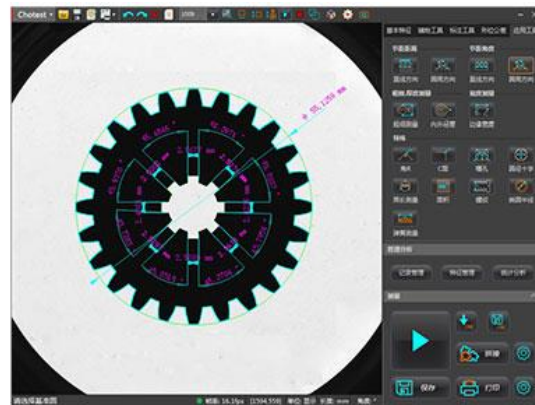
Applications:

The **VisionX software** offers up to 80 extraction analysis tools, including [Feature Extraction] (e.g. maximum points, centre lines, arcs, peaks, etc.), [Accessory Tools] (e.g. arbitrary points, lines and circles, fitted straight lines, fitted circles, tangents, inscribed circles, etc.), [Smart Labelling], [Shape Tolerance], special [Application Tool] (e.g. pitch distance, pitch angle, slot, thread, round cross, downward angle, rounded circle, etc.), [Smart Labelling], [Shape Tolerance], special [Application Tool] (e.g. pitch distance, pitch angle, slot, thread, round cross, downward angles, rounded corners, etc.)

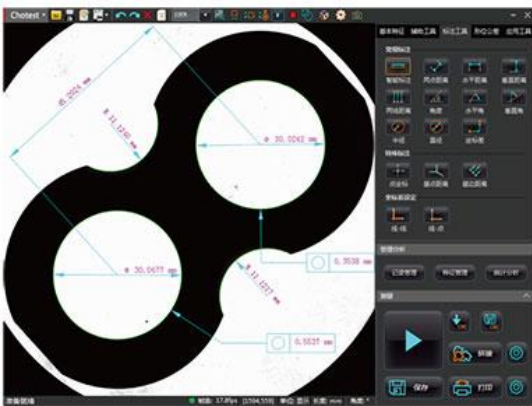
The measurement results and their main statistical values (such as average, σ , 3σ , 6σ , Ca, Cp, Cpk, etc.) are automatically recorded and archived. Operators can select different filter conditions for extracting the history.



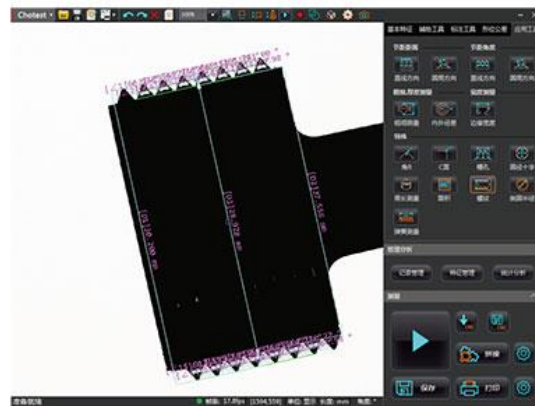
Punched part steel



Gear wheel



Milled part made of steel



Thread

Applications:

Based on the principle of visual measurement with precise image analysis algorithms and two telecentric lenses with a high depth of field, the RVX series flash measuring machines enable super-fast dimensional measurement with one-button operation.

The RVX series is suitable for precise dimensional measurements in the following areas:

- Watch industry / microtechnology
- Med-Tech / medical devices / pacemakers / implants
- Electronics, wafers and printed circuit boards / electronic components
- Moulds and injection moulding
- Precision stamping / fine blanking
- Connectors
- Cutting and milling tools

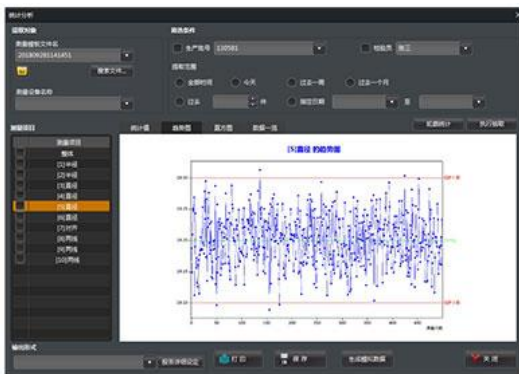
Digital - FOV measuring projector Ryf-Chotest Set RVX1060

Statistics:

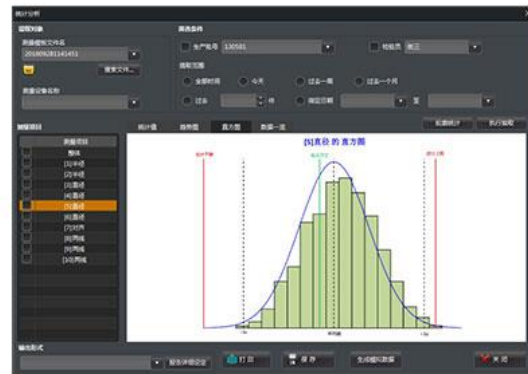
The trend chart shows the regular trend of the measured values, such as the monotonic and periodic change of the measured values, which can be used to monitor the abnormalities in the production process of the production equipment. The histogram reflects the status and distribution of fluctuations in product quality and can intuitively reveal information about the quality situation in the production process, which can be used to predict product quality and defect rate.

By diagnosing and analysing quality using statistical methods, SPC can monitor product quality and the changing trend of the production process. With SPC, we can find preventive solutions for the production process so that subsequent inspections and repairs are reduced

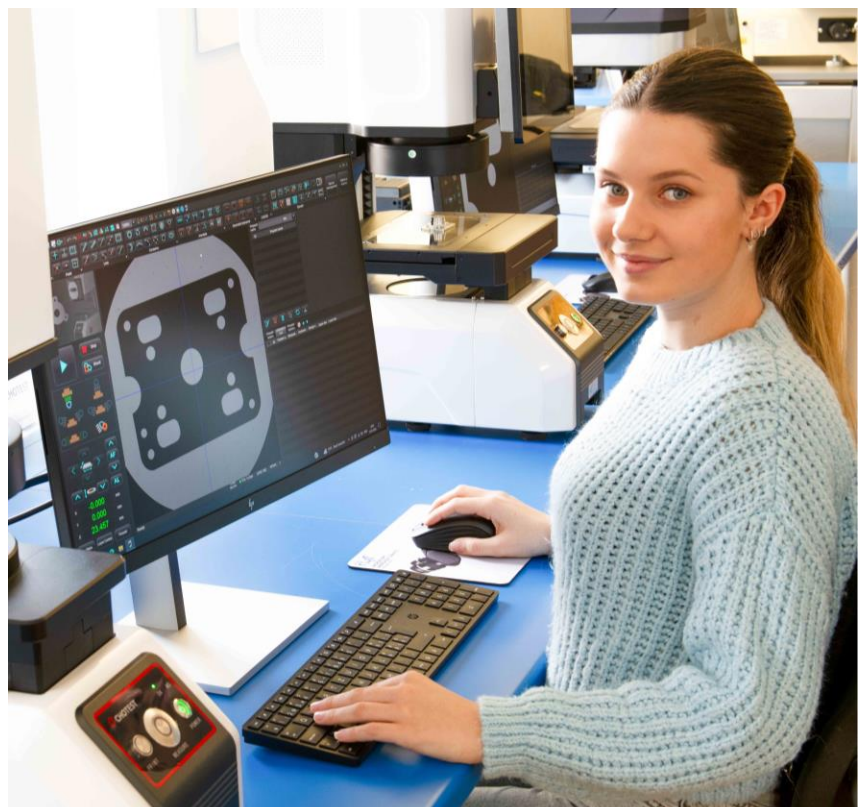
Consequently, the control of the production process and the improvement of product quality are achieved



Trend Graph

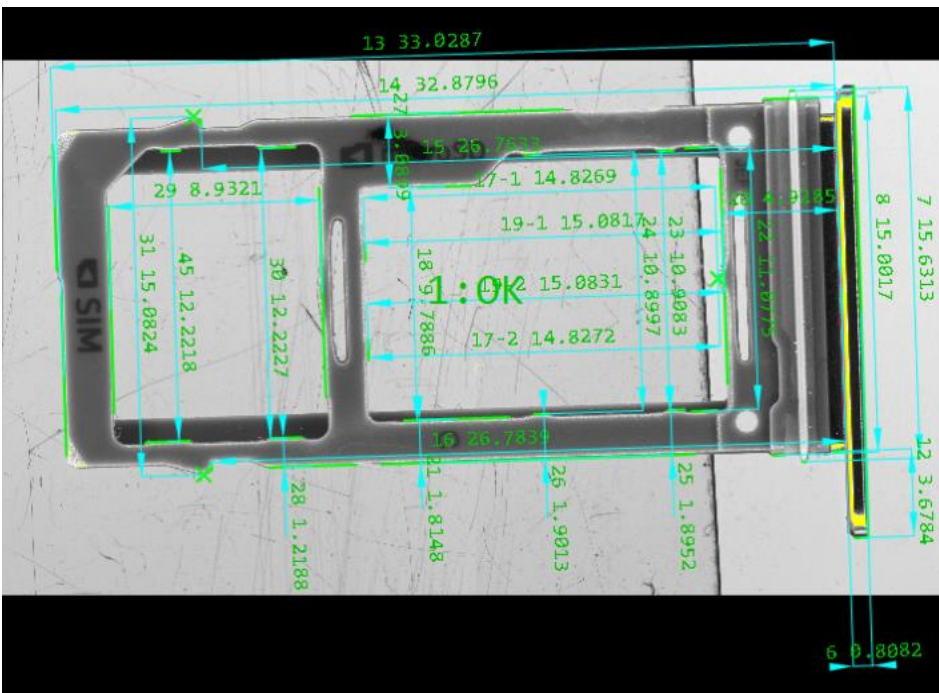
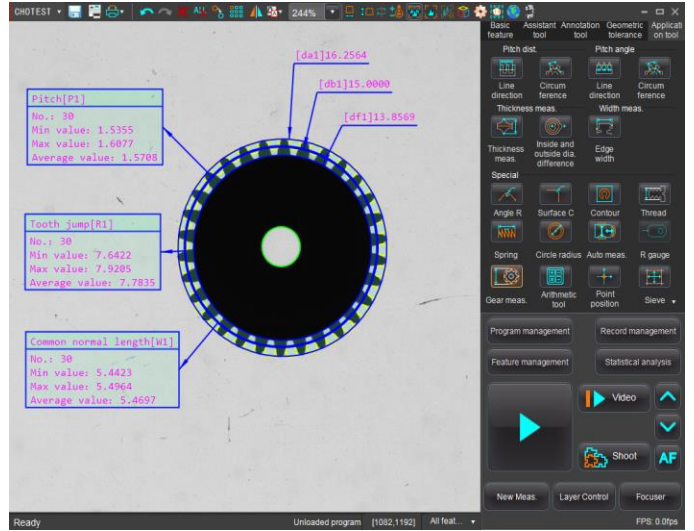
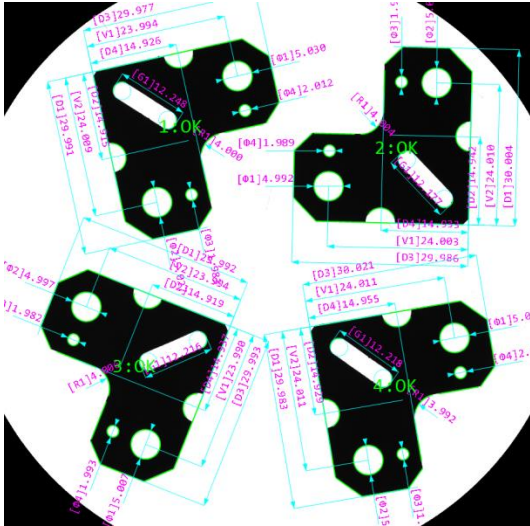


Histogram



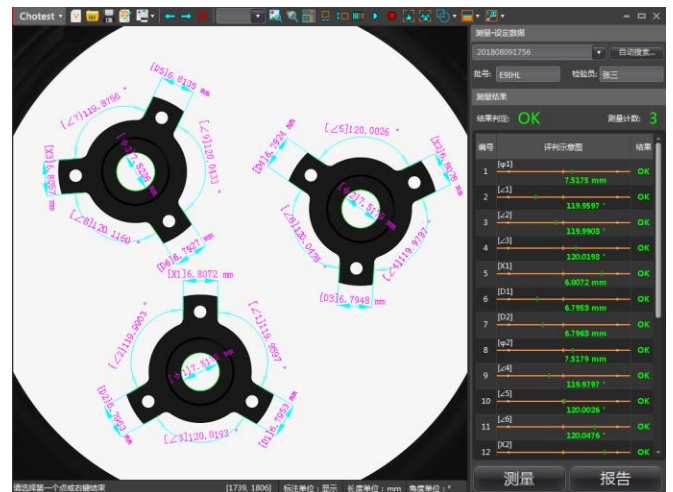
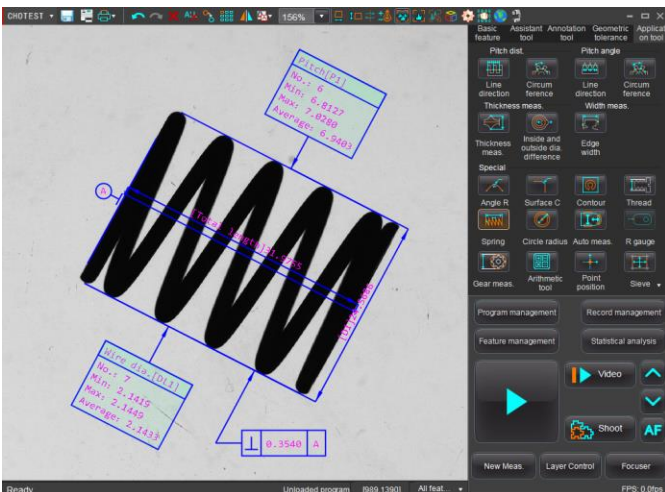
RVX1060 / RVX 1100

Digital - FOV measuring projector Ryf-Chotest Set RVX1060



Various examples:

- Multiple measurements
- Gear measurements
- DXF comparisons
- Automatic spring measurement
- Etc.



Digital - FOV measuring projector Ryf-Chotest Set RVX1060



As the market leader for microscopy and optical measurement, control and testing systems, Ryf AG always requires micromechanical CNC manufacturing expertise for in-house production and customised special solutions. special solutions, Ryf AG repeatedly requires micro-mechanical CNC manufacturing expertise. Modern machines: Various CNC milling centres with three to five axes, CNC drilling and milling machines, CNC turning machines, centre lathes and bed milling machines form the basis for for the economical and high-precision production of assemblies.

NEU!

- Hochpräzise Resultate ganz einfach mit einem Knopfdruck
- Bedienerunabhängige automatische Messung
- Prüfprotokoll per Knopfdruck abgespeichert
- Multimesure: mehrere Teile gleichzeitig messen
- 24 Monate Vollgarantie mit Support vor Ort



Ryf Service: at your service



Maintenance and service

After Sales Service Ryf AG:

Measuring instruments and microscopes need to be checked, calibrated and cleaned at regular intervals. A maintenance and service contract from Ryf AG protects you from unpleasant surprises, because we automatically contact you at the agreed time (after 6, 12, 18 or 24 months) and carry out the maintenance professionally and competently. Of course, we also carry out all work without a maintenance agreement.

Ryf AG
Bettlachstrasse 2
CH-2540 Grenchen
T +41 32 654 21 00
ryfag@ryfag.ch
www.ryfag.ch
Shop: shop.ryfag.ch

Ryf SA
Succursale VD/GE
Route de Genève 9c
1291 Commugny
ryfag@ryfag.ch
T +41 22 776 82 28
www.ryfag.ch

Ryf AG
Zweigniederlassung ZH
Im Hanselmaa 10
8132 Egg / Uster/ZH
T +41 43 277 59 99
ryfag@ryfag.ch
www.ryfag.ch