



Ryf AG
Bettlachstrasse 2 · CH-2540 Grenchen
Tel. 032 654 21 00 · Fax 032 654 21 09
ryfag@ryfag.ch · www.ryfag.ch
www.fotoryf.ch

NEXIV VMR-H 3030

Ultra high precision

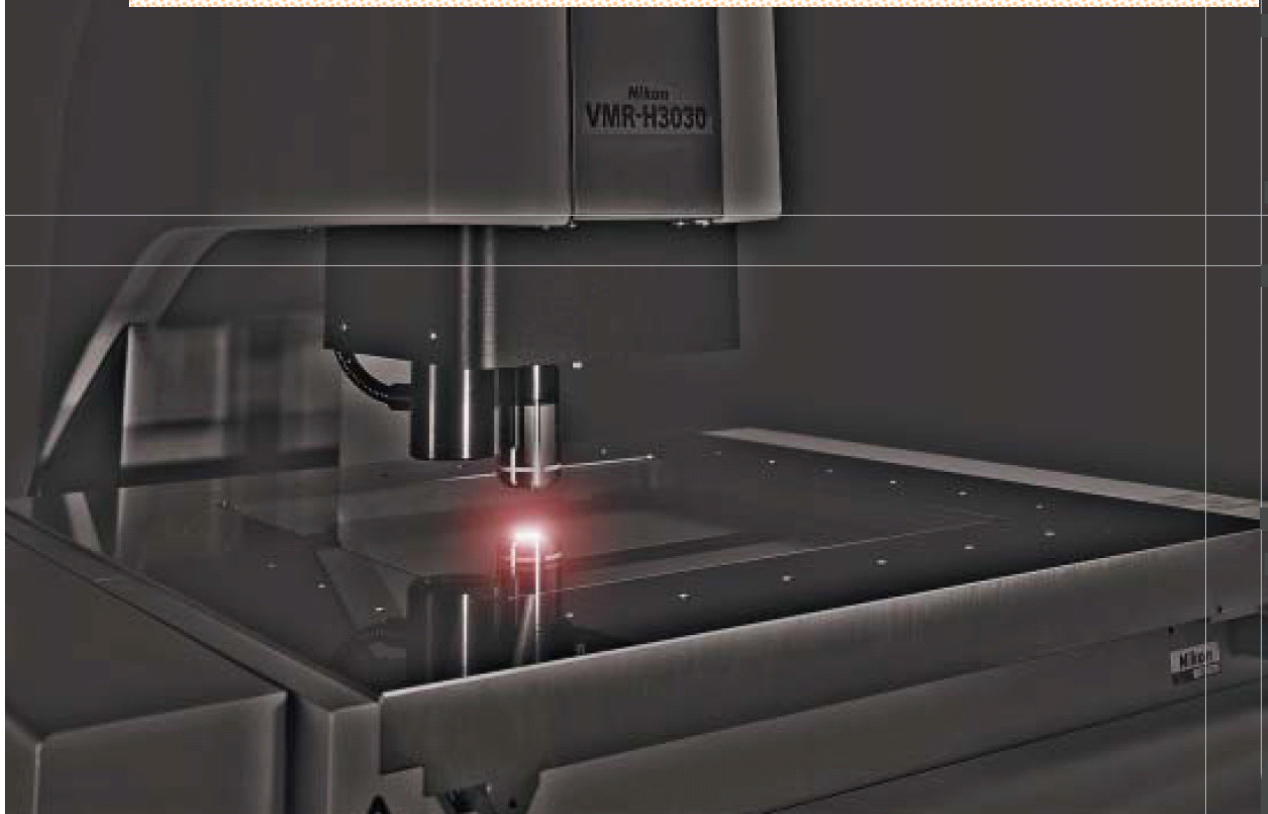


CNC Video Measuring Systems

Destined to Improve Quality

NEXIV VMR-H 3030

Ultra high precision



Destined to Improve Quality



Ryf AG
Bettlachstrasse 2 · CH-2540 Grenchen
Tel. 032 654 21 00 · Fax 032 654 21 09
ryfag@ryfag.ch · www.ryfag.ch
www.fotoryf.ch

NEXIV VMR-H 3030

Ultra high precision





Ryf AG
Bettlachstrasse 2 · CH-2540 Grenchen
Tel. 032 654 21 00 · Fax 032 654 21 09
ryfag@ryfag.ch · www.ryfag.ch
www.fotoryf.ch

NEXIV VMR-H 3030

Ultra high precision

Ultrahigh-precision Type NEXIV VMR-H3030

With ultrahigh precision and versatility, this model can serve as the master instrument in your laboratory. Ideal for high-precision dies and molds.

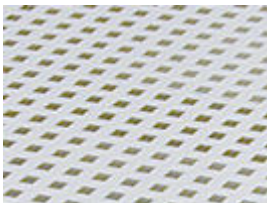


Applications

Master instrument in a laboratory
Dies and molds
Finely machined parts

- Ultrahigh precision appropriate for the master instrument
- Wide illumination choices ensure accurate detection of edges in dies and molds
- Long working distance (50mm) permits measurements of parts with big height gaps
- 15X zoom provides universal applications while facilitating easy search at low magnifications and accurate measurements at high magnifications
- User-friendly software

Measurement Examples



Mask pattern



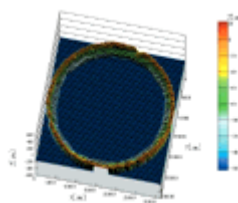
Finely machined part and its 3D graphic



Mold



Surface analysis of a precision mechanical part (option)



NEXIV VMR-H 3030

Ultra high precision

Specifications

Stroke (XxYxZ)	300 x 300 x 150 mm (11.8 x 11.8 x 5.9 in.)
Minimum readout	0.01µm
Maximum workpiece weight	30kg (66.1 lb)
Measuring accuracy	
U _{1X} , U _{1Y}	0.6 + 2L/1000µm (with a workpiece max. 10kg)
U _{2XY}	0.9 + 3L/1000µm (with a workpiece max. 10kg)
Z-axis (L: Length in mm < W.D.)	0.9 + L/150µm
Camera	B&W 1/3-in. CCD (progressive scan), color 1/3-in. CCD
Working distance	50mm
Magnification vs field of view	
Optical Head for Type 1	0.5 - 7.5X / 9.33 x 7 - 0.622 x 0.467 mm
Optical Head for Type 2	1 - 15X / 4.67 x 3.5 - 0.311 x 0.233 mm
Optical Head for Type 3	2 - 30X / 2.33 x 1.75 - 0.155 x 0.117 mm
Auto focus	TTL Laser AF and Vision AF
Illumination	Diascopic, episcopic, 8-segment LED ring illumination (inner ring / outer ring)
Power source	AC100-240V±10%, 50/60Hz
Power consumption	Max. 11A
Dimensions & weight	
Main unit only	915 x 1060 x 1300 mm, approx. 450kg (36.0 x 41.7 x 51.2 in., 992.1 lb.)
Main unit & table	1000 x 1100 x 1900 mm, approx. 570kg (39.4 x 43.3 x 74.8 in., 1256.6 lb.)
Controller	250 (W) x 550 (D) x 500 (H) mm, approx. 31kg (9.8 x 21.7 x 19.7 in., 68.3 lb.)
Footprint	2400 (W) x 1400 (D) mm (94.5 x 55.1 in.)
	Host Computer
Main unit	IBM or HP Workstation PC/AT (Windows® XP)
Monitor	20-in. TFT color

