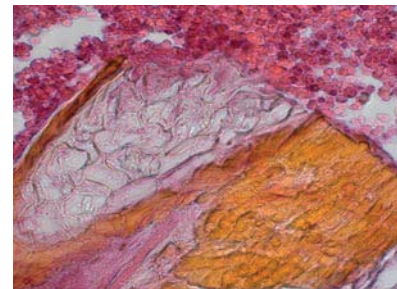
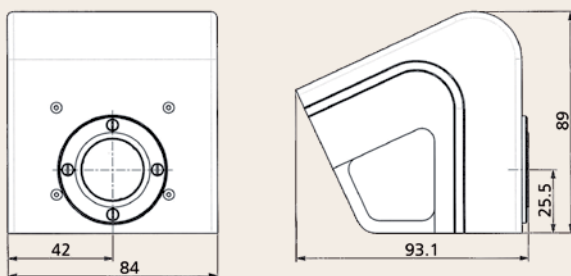




## ProgRes® C5 CCD Routine Camera

Image sensor	2/3" CCD	Voltage supply	FireWire powered
Color / Monochrome	Color	Power consumption	approx. 6 W
Sensor resolution [max]	2580 x 1944 pixel [5.0 Mpix]	Ambient conditions	Temperature: 0 °C ... +35 °C, Humidity: 5 % ... 80 %, non condensing
Active sensor size [H x V]	9.04 mm x 7.86 mm	Storage conditions	Temperature: -20 °C ... +70 °C
Pixel size	3.4 µm²	Dimensions [L x W x H]	89 mm x 84 mm x 93 mm
A / D conversion	12 bit	Weight	approx. 700 g
Pixel clock	12 MHz   18 MHz	Application software	ProgRes® CapturePro for PC/ MAC (TWAIN for PC only)
Dynamic range	61 dB   60 dB	SDK	ProgRes® SDK for PC, LINUX, MAC
Exposure times	90 µs ... 180 s	External camera driver	available at: www.jenoptik.com/progres
Analog gain	1x ... 16x (SDK)	Hardware requirements	PC: MS WIN XP/ Vista /WIN 7 Mac: OS X 10.4 or higher, 3 GHz CPU, 1 GB RAM, 256 MB graphics, FireWire a, Multicore recommended
Max. frame rate [image size]	6 fps [2580 x 1944 pixel] 21 fps [646 x 488 pixel]		
Image resolution	Binning: 2x ... 5x (SDK) Progr. scan: 2580 x 1944   1290 x 972 646 x 488 pixel		
Cooling	optional		
Digital interface	FireWire a		
Optical connection	C-Mount (0.63x TV pref.)		
Trigger In / Out	no		

It is our policy to constantly improve the design and specifications. Accordingly, the details represented herein cannot be regarded as final and binding.



017953-301-99-14-0711-en

ryf ag  
**ryf**  
 Ryf AG  
 Bettlachstrasse 2  
 2540 Grenchen  
 tel 032 654 21 00  
 fax 032 654 21 09  
 www.ryfag.ch

Digital Imaging