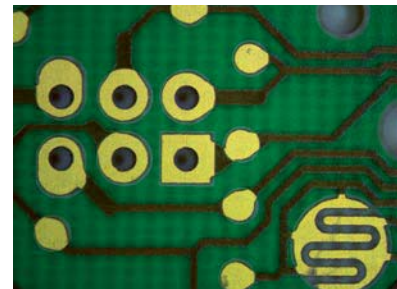
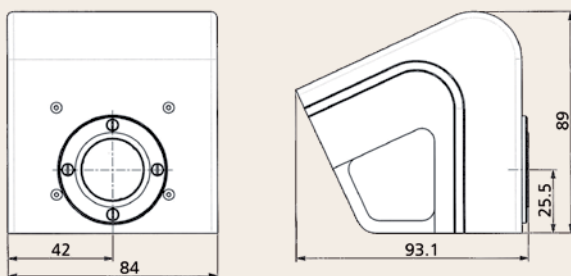




## ProgRes<sup>®</sup> CT3 USB CMOS Camera

Image sensor	1/2" CMOS	Voltage supply	USB powered
Color / Monochrome	Color	Power consumption	approx. 2 W
Sensor resolution [max]	2048 x 1536 pixel [3.15 Mpix]	Ambient conditions	Temperature: +5 °C ... +55 °C, Humidity: 5 % ... 80 %, non condensing
Active sensor size [H x V]	6.55 mm x 4.92 mm	Storage conditions	Temperature: -20 °C ... +70 °C
Pixel size	3.2 μm <sup>2</sup>	Dimensions [L x W x H]	89 mm x 84 mm x 93 mm
A / D conversion	10 bit	Weight	approx. 700 g
Pixel clock	48 MHz	Application software	ProgRes <sup>®</sup> CapturePro for PC (TWAIN); no MAC support
Dynamic range	58 dB	SDK	ProgRes <sup>®</sup> SDK for PC; no MAC support
Exposure times	100 μs ... 3 s	External camera driver	available at: <a href="http://www.jenoptik.com/progres">www.jenoptik.com/progres</a>
Analog gain	1x ... 4x (SDK)	Hardware requirements	PC: MS WIN XP/ Vista /WIN 7, 3 GHz CPU, 1 GB RAM, 256 MB graphics, USB 2.0, Multicore recommended
Max. frame rate [image size]	9 fps [2048 x 1536 pixel] 35 fps [1024 x 768 pixel]		
Image resolution	Binning: 2x, 3x		
Cooling	no		
Digital interface	USB 2.0		
Optical connection	C-Mount (0.5x or 0.63x TV pref., depends from the type of microscope)		
Trigger In / Out	yes		

It is our policy to constantly improve the design and specifications. Accordingly, the details represented herein cannot be regarded as final and binding.



017953-301-99-14-0510-en

ryf ag  
  
 Ryf AG  
 Bettlachstrasse 2  
 2540 Grenchen  
 tel 032 654 21 00  
 fax 032 654 21 09  
[www.ryfag.ch](http://www.ryfag.ch)

Digital Imaging