



ryf ag
ryf
Ryf AG
Bettlachstrasse 2
2540 Grenchen
tel. 032 654 21 00
fax 032 654 21 09
www.ryfag.ch

Stereo Microscopes



The Next Revolution in Microscopy

A Giant Step Forward in Stereo Microscopy

Nikon offers a broad range of stereo microscopes and accessories, including a research stereo microscope system with the world's highest zoom ratio, superb resolution and bright fluorescence imaging. Also features other versatile parallel-optics type models suitable for various applications and Greenough-type models that are user-friendly and affordable.

| | SMZ25 | SMZ18 | SMZ1270/ 1270i | SMZ800N |
|--|---|---|---|--|
| Optical system | Parallel-optics type | | | |
| |  |  |  NEW |  NEW |
| Zoom ratio | 25:1 | 18:1 | 12.7:1 | 8:1 |
| Zooming range | 0.63-15.75x | 0.75-13.5x | 0.63-8x | 1-8x |
| Total magnification*1 (with standard set*2) | 3.15-945x (6.3-157.5X) | 3.75-810x (7.5-135X) | 3.15-480x (6.3-80X) | 5-480x (10-80X) |
| Working distance*3 | 60mm | 60mm | 70mm | 78mm |
| Image capture | ○ | ○ | ○ | ○ |
| System expandability | ○ | ○ | ○ | ○ |
| Embedded use | — | — | ○ | ○ |

Index

Stereo Microscopes

- SMZ25, SMZ18 4
- SMZ1270/1270i, SMZ800N 8
- SMZ745/745T 12
- SMZ445/460, SMZ-2 13

Accessories (for SMZ25, SMZ18)

- Base Unit, Focus Unit, Stand/Focus Mount 14
- Objective, Tubes, Nosepiece/Focus Mount Adapter, Stage 15
- Controller, Darkfield Observation Accessory, Polarizing Observation Accessory, Epi-fluorescence Set 16
- Fiber Illuminator Set, Coaxial Illuminator, Ring LED Illuminator 17

Accessories (for SMZ1270/1270i, SMZ800N, SMZ745/745T, SMZ445/460, SMZ-2)

- Objectives, Auxiliary Objectives 18
- Nosepieces, Tubes, Eye-level Riser, Intermediate Tubes 19
- Stages, Observation Attachments 20
- Illumination Systems 21
- Stands 22
- Universal Table Stands/Focusing Mounts 23

Specifications/System Diagrams

- System Diagrams (SMZ25/18) 24
- Specifications (SMZ25/18) 25
- System Diagrams (SMZ1270/1270i/800N, SMZ745/745T) 26
- Specifications 28

Related Products

- Digital Cameras for Microscopes 30
- Digital Microscope ShuttlePix 31
- Multi-purpose Zoom Microscopes
MULTIZOOM AZ100/100M 31

| SMZ745/SMZ745T | SMZ445/ SMZ460 | SMZ-2 | |
|---|---|--|--|
| Greenough type | | | Optical system |
|  |  |  | |
| 7.5:1 | 4.4:1 / 4.3:1 | 5:1 | Zoom ratio |
| 0.67-5x | 0.8-3.5x / 0.7-3x | 0.8-4x | Zooming range |
| 3.35-300x (6.7-50X) | 4-70x (8-35X)/ 3.5-60x (7-30X) | 4-120x (8-40X) | Total magnification*1 (with standard set*2) |
| 115mm | 100mm | 77.5mm | Working distance*3 |
| ○ (SMZ745T) | — | — | Image capture |
| — | — | — | System expandability |
| ○ | ○ | ○ | Embedded use |

*1 Depends on the combination of eyepiece and objective lens

*2 With a 10x eyepiece and a 1x objective

*3 With a 1x magnification without auxiliary objective

Parallel-optics type

Research Stereo Microscope

SMZ25/SMZ18

Evolutionary stereo microscope

Nikon has developed an all-new stereo microscope that features a large zoom ratio of 25:1, high resolution and exceptional fluorescence transmission capability. The new stereo microscope meets the increasing needs for imaging systems that span spatial scales from single cells to whole organisms.

World's widest zoom range and highest resolution for a stereo microscope

- First stereo microscope to offer a 25:1 zoom range (SMZ25)
- Both eye paths boast numerical apertures (NA) of up to 0.156, using the SHR Plan Apo 1x objective and SMZ25

Automation and digital imaging

- Motorized focus and zoom operation (SMZ25)
- Imaging Software NIS-Elements enables the use of multiple imaging, processing and analysis modalities, including z-stack capture, time-lapse imaging and EDF image generation



SMZ25 Motorized zoom model with the highest zoom ratio and resolution in the SMZ series

Bright, high-contrast fluorescent images

- Fly-eye lens ensures uniform brightness over the entire field of view even at the lowest magnifications
- Breakthroughs in optical design mean significantly improved signal to noise ratio and crystal clear fluorescent images

Easy to use

- User-friendly remote control (SMZ25)
- Easy-to-operate slim LED DIA base with OCC illumination
- Wide range of illuminators and accessories that accommodate a variety of observation methods



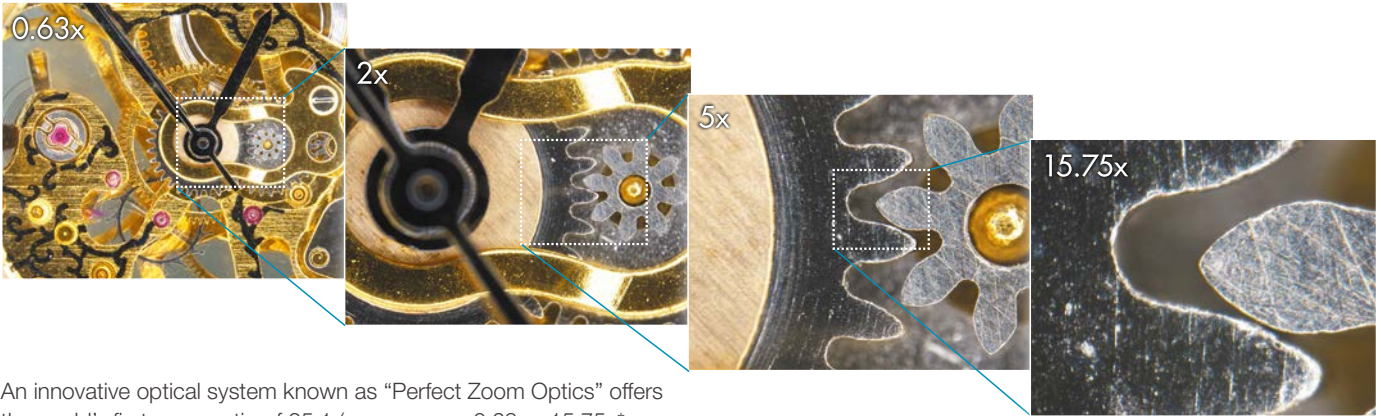
SMZ18 Manual zoom model providing advanced optical performance and incredibly bright fluorescence at an attractive price

| Model | SMZ25 | SMZ18 |
|-----------------------|--|--|
| Type | Motorized zoom | Manual zoom |
| Observation | Brightfield/Darkfield/Fluorescence/Simple polarizing | |
| Zoom ratio | 25:1 | 18:1 |
| Magnification range | 0.63x - 15.75x | 0.75x - 13.5x (with 0.75/1/2/3/4/5/6/8/10/12/13.5x click stops) |
| Maximum magnification | 315x ^{*1} | 270x ^{*1} |
| Maximum FOV | ø70 mm ^{*2} | ø59 mm ^{*2} |
| Maximum NA of | 0.312 ^{*3} | 0.3 ^{*3} |

*1: Using SHR Plan Apo 2x/ C-W10xB *2: Using SHR Plan Apo 0.5x/ C-W10xB *3: Using SHR Plan Apo 2x

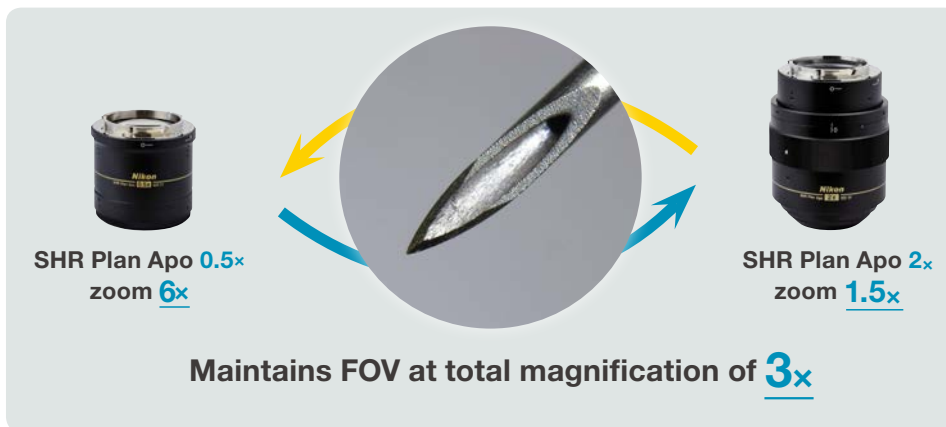
Remarkable resolution and the world's widest zoom range

Dynamic zoom ratio of 25:1 SMZ25



An innovative optical system known as "Perfect Zoom Optics" offers the world's first zoom ratio of 25:1 (zoom range: 0.63x - 15.75x*; *as of May 2013). The SMZ25 can seamlessly capture the entire dish while simultaneously delivering microscopic details.

Auto Link Zoom (ALZ) supports seamless viewing at different scales SMZ25



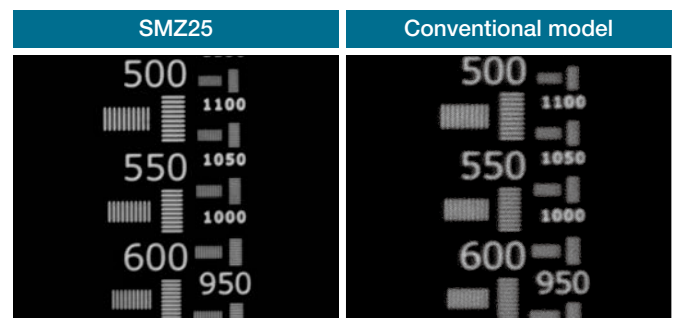
ALZ automatically adjusts the zoom factor to maintain the same field of view when switching objective lenses. This function enables seamless switching between whole organism imaging at low magnifications and detailed imaging at high magnifications.

Superior resolution never before seen on a stereo microscope SMZ25 SMZ18

Newly developed SHR (Super High Resolution) Plan Apo series objective offers a resolution of 1100LP/mm (observed value, using SHR Plan Apo 2x at maximum zoom). The 0.5x, 1x, or 1.6x lower magnification objectives deliver a bright field of view and brilliant images with true-to-life colors.



Comparison of resolution and color aberration by resolution chart



Parallel-optics type

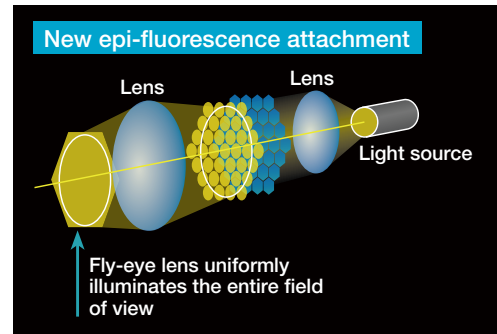
Bright, high-contrast fluorescent images SMZ25 SMZ18

Enhanced brightness and uniform illumination in a low magnification range

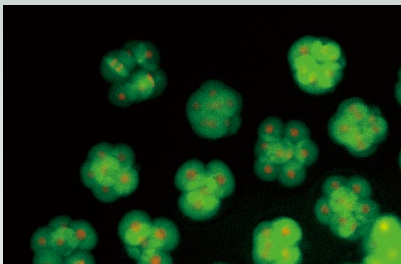
The SMZ25 series is the first stereo microscope in the world to use a fly-eye lens on an epi-fluorescence attachment. This ensures bright, uniform illumination even at low magnifications across a large field of view.

Improved S/N ratio and crystal clear fluorescent images thanks to an improved optical system

Nikon has succeeded in improving the signal and reducing noise in fluorescent images by using a short-wavelength, high-transmission Fluor lens. This enables observations of cell division and samples with weak fluorescence, both of which are difficult using conventional stereo microscopes.

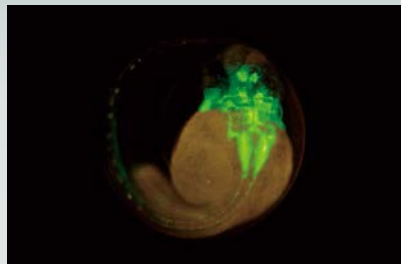


Sample images



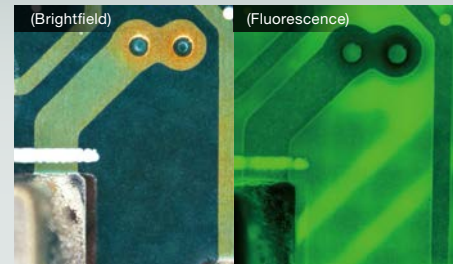
Fertilized mouse egg

Image courtesy of Kazuo Yamagata, Ph.D., Center for Genetic Analysis of Biological Responses, Research Institute for Microbial Diseases, Osaka University



2 days old Transgenic Zebrafish embryo, Tg (isl1-GFP)

(using SHR Plan Apo 1x at zoom magnification of 6x with SMZ25)
Image courtesy of Hisaya Kakinuma, Ph.D., Laboratory for Developmental Gene Regulation, Developmental Brain Science Group, RIKEN Brain Science Institute



Board

Automation and digital imaging SMZ25 SMZ18

A wide range of digital imaging capabilities with the Digital Sight series and NIS-Elements imaging software

Easily obtain the information required, such as Z drive position, zoom factor, objective lens, filter cube and LED DIA brightness, by using the Digital Sight series and NIS-Elements or Digital Sight series DS-L3 together with the microscope.



| Detected observation condition/available control | ⊙ : Detection and control of observation condition possible ○ : Detection of observation condition possible | | | |
|--|---|--------------|--|--------------|
| | SMZ25 | | SMZ18 | |
| | • Motorized focus unit • Motorized epi-fluorescence set (control box A) | | • Manual focus unit • Manual epi-fluorescence set (relay box and control box B) | |
| | DS-L3 | NIS-Elements | DS-L3 | NIS-Elements |
| Zoom magnification | ○ | ⊙ | ○ | ○ |
| Focusing | ○ | ⊙ | — | — |
| Objective (with nosepiece) | ○ | ○ | ○ | ○ |
| Diascopic LED illumination stand (ON/OFF, light intensity control) | ○ | ⊙ | ○ | ⊙ |
| Fluorescence illuminator (light intensity control) | ○ | ⊙ | ○ | ⊙ |
| Filter cube | ○ | ⊙ | ○ | ○ |

For other combinations, please confirm with Nikon.

* With NIS-Elements F (Free package), functions above are not available. Use NIS-Elements D/Br/Ar.

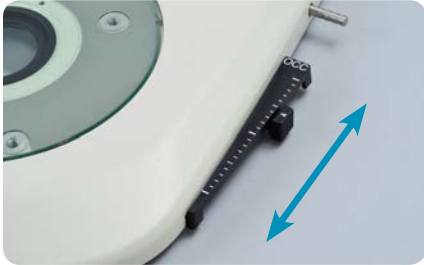
Improved observation efficiency

Easy-to-use OCC illumination

SMZ25

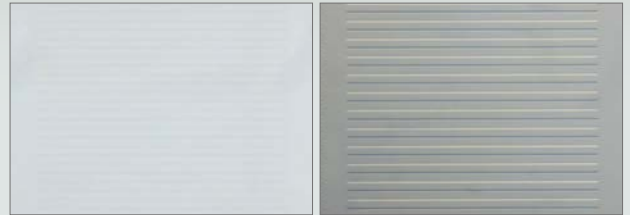
SMZ18

The new LED DIA Base with built-in OCC illuminator generates minimal heat, consumes little power and has a long life. The illuminator also enhances the contrast of uneven surfaces, such as those of film.



The OCC illuminator can be controlled using a slide lever. Thanks to scales on the slide lever, the user can save and reproduce desired illumination levels. In addition, an OCC plate can be inserted into the illumination unit from the front and rear sides, so images with different shadow direction can be observed.

Comparison images (film)



Conventional diascopic illumination OCC illumination

What is OCC illumination?

OCC stands for oblique coherent contrast, a form of oblique lighting method developed by Nikon. Compared to conventional diascopic illumination that illuminates directly from below, OCC illumination applies coherent light to samples in a diagonal direction, adding contrast to colorless and transparent sample structures.

User-friendly remote control

SMZ25

The all-new remote control provides easy access to zoom and focus controls and is designed for both right- and left-hand use. The remote control contains an LCD monitor with an adjustable backlight that provides at-a-glance information about zoom factor, objective lens, filter cube and LED DIA brightness.



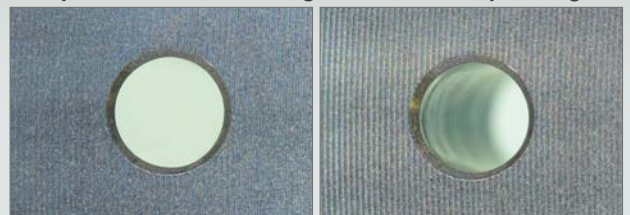
On-axis imaging for digital images

SMZ25

SMZ18

Easily switch between stereo position (stereoscopic view) and mono position (on-axis view) when using the P2-RNI2 Intelligent Nosepiece by simply moving the objective lens.

Comparison of on-axis image and stereoscopic image



On-axis image

Stereoscopic image

Parallel-optics type

Stereo Microscope

SMZ1270/1270i SMZ800N



Incredible sharpness throughout a wide magnification range

These versatile stereo microscopes provide both excellent optical performance, such as high-magnification, high-zoom ratio and high-resolution images, and advanced operability. The expandability of parallel optics makes these models suitable for a wide range of applications.

Highest-in-class zoom ratio

- Highest-in-class zoom ratio of 12.7:1 (0.63 – 8x) with SMZ1270/1270i
- New WF series objectives optimized for wide viewfield observation at low magnification

High-quality images

- High-level chromatic aberration correction provides sharp images throughout the viewfield.

Easy to get results

- Automatically detects magnification data in combination with the digital camera control unit (SMZ1270i only)
- Nosepiece offers both widened magnification range and on-axis imaging
- Eyepiece tubes with various inclination angles and slim-type stands minimize user fatigue during observation

Expandable with a wide range of accessories

- A wide range of accessories are available, including eyepiece tubes and stands that are equal to superior specification stereo microscope models



SMZ1270

Versatile stereo microscope with the highest-in-class zoom ratio



SMZ1270i

The same as the SMZ1270 but equipped with intelligent functions found in superior models (SMZ1270i with a trinocular tilting tube and nosepiece)



SMZ800N

Affordable model with improved operability and basic performance

Highest-in-class zoom ratio

Wide zoom range

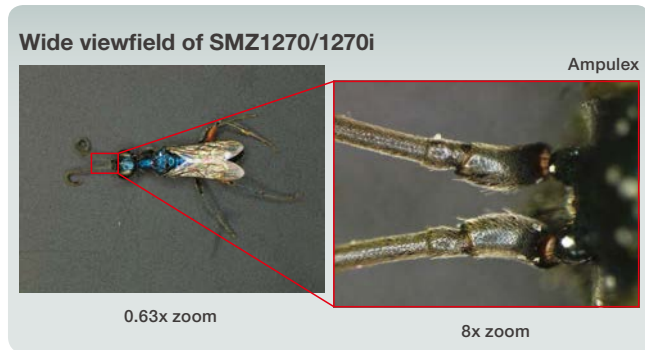
The SMZ1270/1270i offers the highest-in-class zoom ratio of 12.7x (0.63 – 8x). It offers both low-magnification wide viewfield observation of the whole of a 35 mm petri dish* during screening and high-magnification observation of minute cell structures

* with 1x objective at the lowest magnification.

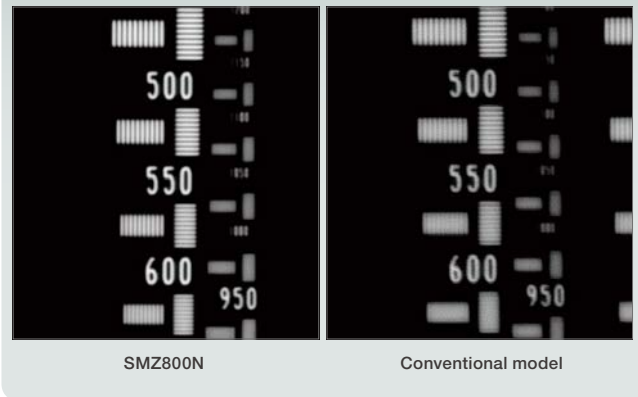


SMZ1270/1270i enables observation of the whole of a 35 mm petri dish.

The SMZ800N comes with a 1 – 8x zoom range, with higher magnification than conventional models and enables high-resolution observation of 640LP/mm (using ED Plan Apo 2x/WF at maximum zoom).



Improved resolution of SMZ800N



Newly developed objectives

The newly developed WF series objectives offer uniformly bright images even at low magnification and wide viewfield observation with SMZ1270/1270i. In addition, a 0.75x objective is now available, expanding the lineup of low magnification objectives.



High-quality images

Apochromat optics have been adopted for the lenses in the SMZ1270/1270i zoom body and semi-apochromat optics in the SMZ800N to achieve high-level chromatic aberration correction. They provide sharp images without blur or color fringe.



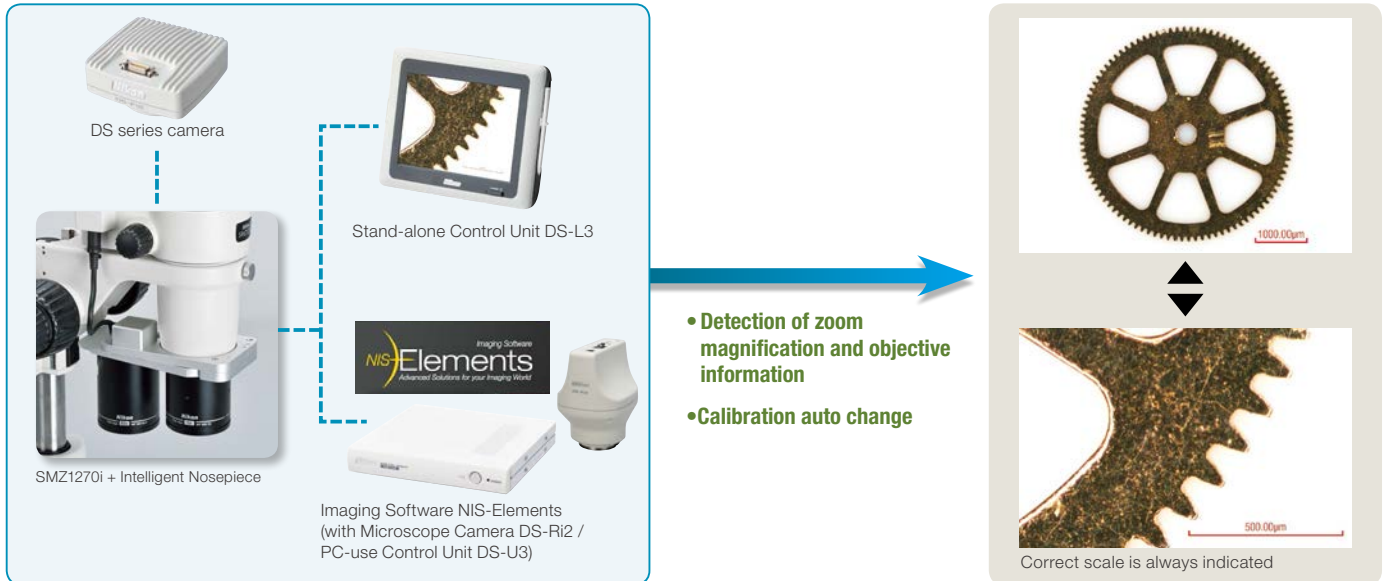
Apochromat optics
(captured with SMZ1270+Plan Apo 1x/WF)

Conventional optics

Easy to get results

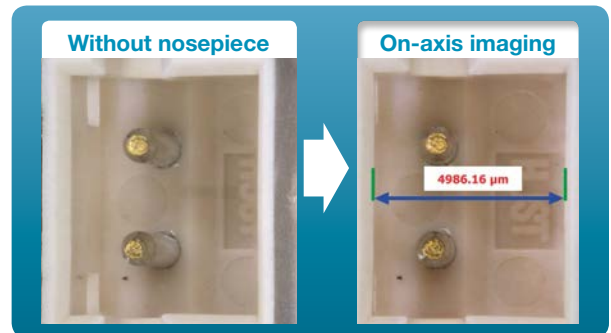
Intelligent function for status readout **SMZ1270i**

In combination with the Camera Control Unit DS-L3 and imaging software NIS-Elements, the SMZ1270i can detect zoom magnification data. In addition, with the Intelligent Nosepiece P-RNI2 attached, data related to the objective in use is also detected. Calibration data is automatically altered, following changes of magnification, to display the appropriate scale and measurement results on the images.



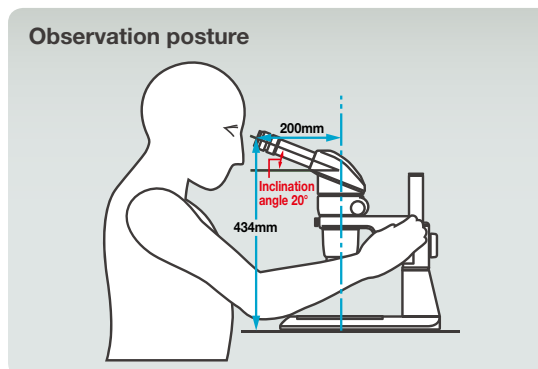
On-axis observation with the nosepiece

The double nosepiece offers easy on-axis imaging, enabling observation of the bottom of holes, accurate simple measurement and extended depth of focus (EDF) imaging without distortion.



Ergonomic design

Eyepiece tubes with a range of inclination angles are available for comfortable observation. They offer the optimum eyelevel to suit each user. In addition, slim-type plain stands and the LED Diascopic Illumination Stand easily facilitate the presentation and removal of specimens.



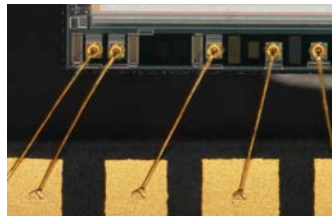
With the LED Diascopic Illumination Stand and Fiber Diascopic Illumination Stand, focus control during observation is possible using the dial in front of the base.

Expandable with a wide range of accessories

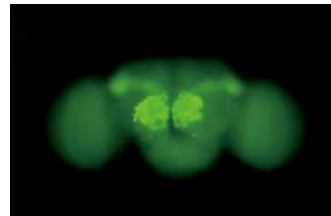
In addition to conventional accessories, the level of accessories used with superior models is also available for the SMZ1270/1270i and SMZ800N. These include trinocular tubes and slim-type LED diascopic illumination stands. These allow various microscope configurations to suit numerous routine inspections and a range of research and development applications.



Fibers



Semiconductor

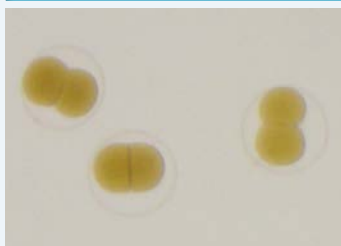


Brain of adult drosophila excited with GFP
Image courtesy of Hokto Kazama, Ph.D., Circuit Mechanisms of Sensory Perception, Brain Science Institute, RIKEN

OCC illumination



Diascopic brightfield illumination



With the LED Diascopic Illumination Stand and Fiber Diascopic Illumination Stand, image contrast under OCC illumination can be easily adjusted.

OCC illumination boosts the contrast of transparent sample structures.

Hemicentrotus pulcherrimus in two-cell stage

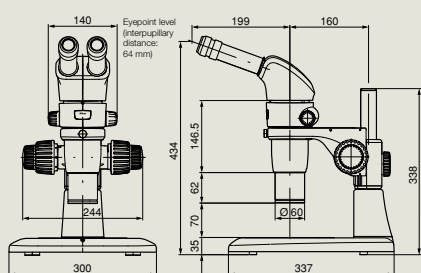
| | SMZ1270 | SMZ1270i | SMZ800N |
|---------------------|---|---|---|
| Optical system | Parallel-optics type (zooming type) | | |
| Zoom ratio | 12.7 : 1 | | 8 : 1 |
| Zoom range | 0.63 – 8x (0.63/1/2/3/4/6/8x stops) | | 1 – 8x (1/2/3/4/6/8x stops) |
| Total magnification | 3.15 – 480x (depending on eyepiece and objectives) (with coaxial episcopic illuminator: 15 – 540x) | | 5 – 480x (depending on eyepiece and objectives) (coaxial episcopic illuminator: 22.5 – 540x) |
| Tubes | Eyepiece inclination: 20° (P-B Binocular Tube) / 15° (P-TL100 Trinocular Tube) / 0°-30° (P-TERG100 Trinocular Tilting Tube, P-TERG50 Trinocular Tilting Tube) | | |
| Eyepieces | C-W10xB (F.N. 22), C-W15x (F.N. 16), C-W20x (F.N. 12.5), C-W30x (F.N. 7) | | |
| Objectives | Plan Apo 0.5x/WF, Plan Apo 0.75x/WF, Plan Apo 1x/WF, ED Plan 1.5x/WF, ED Plan 2x/WF | | Plan Apo 0.5x/WF, Plan Apo 0.75x/WF, Plan Apo 1x/WF, ED Plan 1.5x/WF, ED Plan 2x/WF, Plan 1x, ED Plan 0.75x, Achro 0.5x |
| Working distance | 70 mm (with Plan Apo 1x/WF) | | 78mm (with Plan 1x) |
| Weight (approx.) | 9.8 kg (with P-B Binocular Tube + P-DSL32 LED Diascopic Illumination Stand) | 11.9 kg (with P-TERG100 Trinocular Tilting Tube + P-DSL32 LED Diascopic Illumination Stand) | 6.8 kg (with P-B Binocular Tube + C-PSN Plain Stand) |

Please refer to the system diagram (P. 26-27) for accessory combinations.

Dimensions

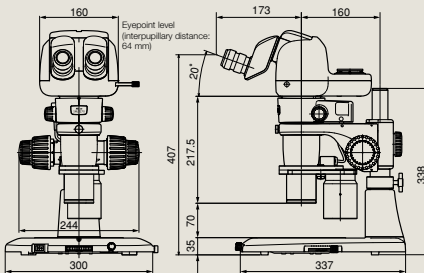
SMZ1270 set

SMZ1270 + P-B Binocular Tube + Plan Apo 1x/WF + P-PS32 Plain Stand



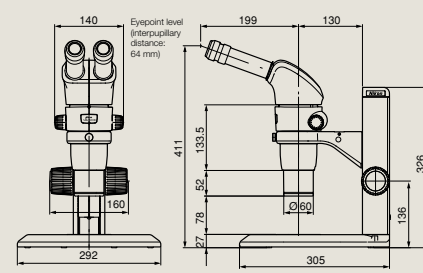
SMZ1270i set

SMZ1270i + P-TERG100 Trinocular Tilting Tube + Plan Apo 1x/WF + Intelligent Nosepiece P-RN12 + P-DSL32 LED Diascopic Illumination Stand



SMZ800N set

SMZ800N + P-B Binocular Tube + C-PSN Plain Stand



Greenough Type Stereo Microscope

SMZ745/745T

Superior 7.5x zoom and 115 mm working distance
Trinocular optical head type is also available

- The SMZ745/745T boasts a 7.5x zoom that incorporates the Greenough optical system. The zoom range of 0.67x to 5x provides a broad observation range.
- As well as high zoom ratio and magnification, the SMZ745/745T offers an unrivaled 115 mm working distance.
- The SMZ745T incorporates an optical path switching lever that enables easy switchover between eyepiece and camera. A DS series digital camera can be attached.



Three "A" design

• Air-tight **SMZ745**

By making joints airtight, contamination from dust, oil, water and other contaminants is prevented.

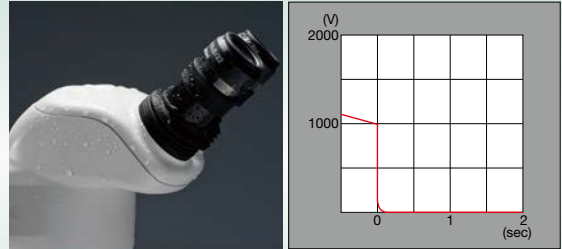
Airtight construction: JIS Degrees of protection provided by enclosures IPX1

• Anti-mold **SMZ745** **SMZ745T**

Anti-mold design developed exclusively by Nikon ensures peace of mind when the microscope is used in environments subject to high heat or humidity.

• Anti-electrostatic **SMZ745** **SMZ745T**

Static electricity built up within the microscope is discharged almost instantly, ensuring higher yields.
Antistatic function: 1000–10V, discharge within 0.2 sec.



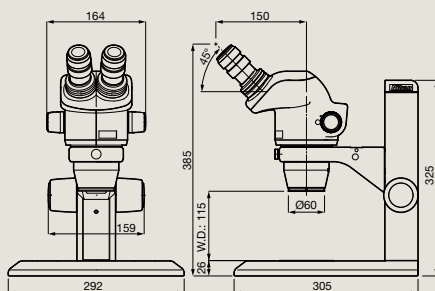
Specifications

| | SMZ745 | SMZ745T |
|-------------------------------------|---|---|
| Optical system | Greenough type (zooming type) | Greenough type (zooming type), trinocular tube |
| Zoom ratio | 7.5 : 1 | |
| Zoom range | 0.67-5x (with 0.67/1/2/3/4/5x stops) | |
| Total magnification | 3.35-300x (depending on eyepiece and auxiliary objective used) | |
| Straight tube | — | Built-in C-mount 0.55x magnification lens (F.N. 11), compatible with 2/3 in. or smaller CCD |
| Tubes | Fixed type Eyepiece inclination: 45° Interpupillary distance adjustment: 52-75 mm | |
| Eyepieces (with diopter adjustment) | C-W 10x (F.N. 22), C-W 15x (F.N. 16), C-W 20x (F.N. 12.5), C-W 30x (F.N. 7) | |
| Auxiliary objectives | G-AL 0.5x (W.D. 211 mm), G-AL 0.7x (W.D. 150 mm), G-AL 1.5x (W.D. 61 mm), G-AL 2x (W.D. 43.5 mm), G-AL ERG 0.77-1.06x (W.D. 102-48mm) | |
| Working distance | 115 mm (standard) | |
| Airtight construction | JIS Degrees of protection provided by enclosures IPX1 | — |
| Weight (approx.) | 1.6 kg (body) | 1.8 kg (body) |

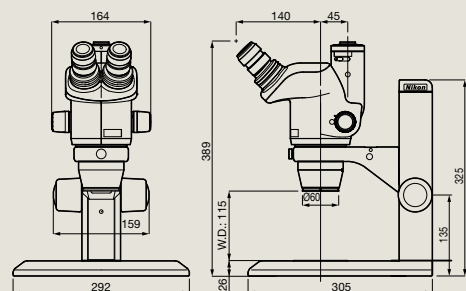
F.N.: Field Number

Dimensions

SMZ745 set SMZ745 + C-PSN Plain Stand/CN



SMZ745T set SMZ745T + C-PSN Plain Stand/CN



Unit: mm

Greenough Type Stereo Microscope

SMZ445/460

Designed for excellent cost performance

- The SMZ445 has a 45° eyepiece tube inclination, and the SMZ460 has a 60° eyepiece tube inclination, which is ideal for embedded use.
- Compact design with ease-of-use and high optical performance.
- ESD protection guards against electrostatic damage to samples.

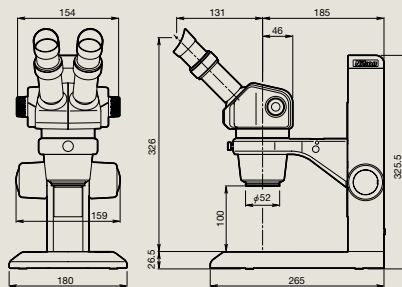


Specifications

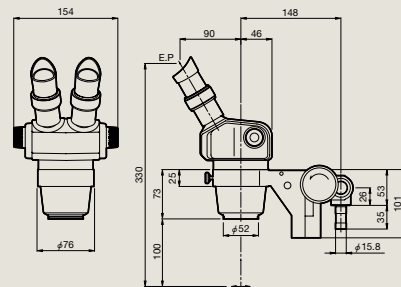
| | SMZ445 | SMZ460 |
|-------------------------------|---|---|
| Optical system | Greenough type (zooming type) | |
| Zooming ratio | 4.4 : 1 | 4.3 : 1 |
| Zooming range | 0.8–3.5x | 0.7–3x |
| Total magnification | 4–70x | 3.5–60x |
| Tube | Eyeiece inclination: 45° Interpupillary distance adjustment: 54–75 mm Eyeiece diopter adjustable for both eyes | Eyeiece inclination: 60° Interpupillary distance adjustment: 54–75 mm Eyeiece diopter adjustable for both eyes |
| Eyepieces | SM 10xB (F.N. 21), SM 15xB (F.N. 14), SM 20xB (F.N. 12) | |
| Auxiliary objectives (option) | AL5 (0.5x), AL7 (0.7x) | |
| Working distance | 100 mm (standard) | |
| Weight (approx.) | 1.0 kg (body) | 1.1 kg (body) |

Dimensions

SMZ445 SMZ445 + C-PSN Compact Stand/CN



SMZ460 SMZ460 + C-FMBN Focusing Mount BN



Unit: mm

Greenough Type Stereo Microscope

SMZ-2

High-resolution optics ideal for inspection, assembly, and measurement

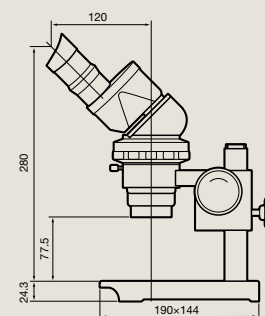
- Compact design with horizontally positioned zooming ring (rotation: 90°)
- Eyepiece inclination of 45° for comfortable observation



Specifications

| | SMZ-2 |
|-------------------------------------|--|
| Optical system | Greenough type (zooming type) |
| Zooming ratio | 5 : 1 |
| Zooming range | 0.8–4x |
| Total magnification | 4–120x (Depending on eyepiece and auxiliary objective used.) |
| Tube | Eyeiece inclination: 45° Interpupillary distance adjustment: 56–75 mm |
| Eyepieces (with diopter adjustment) | SM E10xA (F.N. 23, standard), SM E15xA (F.N. 14), SM 20xB (F.N. 12), C-W30x (F.N. 7) |
| Auxiliary objectives | AL5 (0.5x), AL7 (0.7x) |
| Working distance | 77.5 mm (with standard configuration) |
| Weight (approx.) | 1.6 kg (body), 1.9 kg (stand) |

Dimensions



Unit: mm

Wide range of dedicated accessories for SMZ25/SMZ18 for all types of observation

Base Unit, Focus Unit, Stand/Focus Mount

Base Unit

Nikon has improved ease of use by moving the controls to the front of the base, including the brightness adjustment dial and the on/off switch.

Fiber DIA base

The Fiber DIA base features condenser lenses that can be switched between low and high magnifications. Furthermore, the OCC illumination system allows high-contrast illumination.



1 P2-DBF Fiber Diascopic Illumination Base

Slim Bases

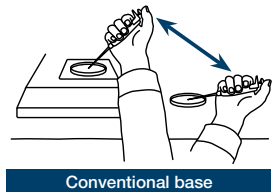
The slimmer LED DIA Base and Plain Base help increase efficiency of sample manipulation by bringing the level of the sample closer to the table.



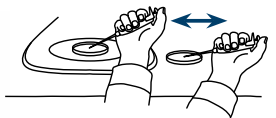
2 P2-DBL LED Diascopic Illumination Base



3 P2-PB Plain Base



Conventional base



Slim base

Focus Unit

The focus unit is combined with the base unit. Choose from either a manual or motorized focus unit.



1 P2-MFU Motorized Focus Unit

2 P2-FU Focus Unit

Stand/Focus Mount

SMZ18

SMZ18 can be mounted on various compact stands using a focus mount.



1 P2-FMDN Focus Mount
2 P-PS32 Plain Stand

3 P-DSL32 LED Diascopic Illumination Stand

4 P-DSF32 Fiber Diascopic Illumination Stand

SHR Plan Apo Objective Series

The SHR Plan Apo series features higher NA, wider field of view and superior flatness and color aberration correction. These objective lenses can be seamlessly switched because all magnifications have the same parfocal distance. The new bayonet mount design allows lenses to be safely and easily removed.



1 P2-SHR Plan Apo 0.5x
2 P2-SHR Plan Apo 1x
3 P2-SHR Plan Apo 1.6x
4 P2-SHR Plan Apo 2x

| | | SHR Plan Apo 0.5x | SHR Plan Apo 1x | SHR Plan Apo 1.6x | SHR Plan Apo 2x |
|------------------|-------|-------------------|-----------------|-------------------|------------------|
| Maximum NA | SMZ25 | 0.078 | 0.156 | 0.25 | 0.321 |
| | SMZ18 | 0.075 | 0.15 | 0.24 | 0.3 |
| Working distance | | 71 mm | 60 mm | 30 mm | 20 mm |
| Correction ring | | — | — | — | 3 mm water depth |
| Wavelength | | 380-700 nm | | | |

Tubes

Choose from two types of tilting trinocular tube and one type of low eyelevel trinocular tube. All tubes have a camera port for seamless integration with the Digital Sight series.



1 P2-TERG100 Trinocular Tilting Tube (eyepiece: port 100:0 / 0:100)



2 P2-TERG50 Trinocular Tilting Tube (eyepiece: port 100:0/50:50)



3 P2-TL100 Trinocular Tube L (eyepiece: port 100:0 / 0:100)

Nosepiece/Focus Mount Adapter

Both single and double nosepieces are available.



1 P2-RNI2 Intelligent Nosepiece



2 P2-FM Focus Mount Adapter

Stage

The stage features an XY stroke of 6x4* inches (150 mm x 100 mm) and can be attached to any of the bases, making it effective for capturing large images when used in combination with imaging software NIS-Elements. A sliding stage and tilting stage are also available. *Limited Y travel with 32 mm column bases



P-SXY XY Stage

Remote Control

Nikon offers a remote control unit that can be used to operate the microscope and capture images by hand. A footswitch is also available, allowing the user to operate the microscope and capture images by foot, freeing the hands for sample manipulation.



P2-RC Remote Controller



1 AZ-PCR Photo Release
2 AZ-FSW Foot Switch

Darkfield Observation Accessory

Darkfield viewing is possible simply by attaching the darkfield unit to the base.

- 1 P-DF LED Dark Field Unit
- 2 Shading cover



Polarizing Observation Accessory

The analyzer is attached to the objective and the polarizer to the base or stand to enable polarized viewing.

- 1 P2-POL Simple Polarizing Attachment



Epi-fluorescence Set

Motorized Epi-fluorescence Set

The fluorescent turret can be operated using the remote control or imaging software NIS-Elements.

- 1 P2-EFLM Motorized Epi Fluorescence Attachment
- 2 Light shading Plate (comes with Fluorescence Attachment)
- 3 P2-EFL Filter Cube (GFP-B/GFP-L/RFP)
- 4 P2-EFLBF Filter Cube (Bright Field)
- 5 P2-CTLA Control Box
- 6 P2-RC Remote Controller
- 7 P2-CIA QL1x/0.5x 1/4 λ Plate



Combinations with SMZ25

Manual Epi-fluorescence Set

An easy-to-use manual model for Nikon's newly developed high-performance epi-fluorescence attachment.

- 1 P2-EFLI Epi Fluorescence Attachment
- 2 Light shading Plate (comes with Fluorescence Attachment)
- 3 P2-EFL Filter Cube (GFP-B/GFP-L/RFP)
- 4 P2-EFLBF Filter Cube (Bright Field)
- 5 P2-CTLB Control Box
- 6 P2-CIA QL1x/0.5x 1/4 λ Plate



Combinations with SMZ18

Fiber Illuminator Set

Flexible Double Arm Fiber Illumination Set

The direction and angle of illumination can be changed to suit the sample by making adjustments with these double arms. The fiber holder position can also be changed to obtain the optimal position for illuminating samples.

- ① C-FDF Flexible Double Arm Fiber Illumination Unit
- ② C-FIDH Fiber Holder
- ③ C-FLED2 LED Light Source for Fiber Illuminator



Combinations with SMZ18

Ring Fiber Illumination Set

This ring fiber illumination set features an episcopic illumination unit that effectively captures images (can be used with 1x and 0.5x objective lenses).

- ① P2-FIR Ring Fiber Illumination Unit
- ② C-FLED2 LED Light Source for Fiber Illuminator



Combinations with SMZ18

Coaxial Illuminator

The coaxial light illuminator makes it possible to view light reflected from the surface of a sample. It is ideal for shooting shadow-less images of thick samples.

- ① P2-CI Coaxial Epi Illuminator
- ② C-FLED2 LED Light Source for Fiber Illuminator
- ③ P2-CIA QL1x/0.5x 1/4 λ Plate



Combinations with SMZ18

Ring LED Illuminator

Ring LED illuminator is equipped with high-intensity, long-life (20,000 hours) LEDs. The illuminator's dial adjusts the intensity of the white LED.

- ① P2-FIRL LED Ring Illumination Unit



Combinations with SMZ25

A variety of accessories are available for stereoscopic observations



Plan Apo WF series

Objectives

A wide selection with various magnifications and working distances is available, including high-NA, high-resolution and wide-viewfield Plan Apo WF series objectives with superior image flatness and chromatic aberration correction.



| Objectives | Working distance (mm) | Zoom magnification | NA | Actual FOV*1 |
|------------|-----------------------|--------------------|--------|--------------|
| Plan Apo | 82 | 0.63x | 0.0095 | 69.8 |
| | | 8x | 0.0525 | 5.5 |
| | 107 | 0.63x | 0.0143 | 46.6 |
| | | 8x | 0.0788 | 3.7 |
| ED Plan | 70 | 0.63x | 0.0190 | 34.9 |
| | | 8x | 0.1050 | 2.8 |
| | 44 | 0.63x | 0.0285 | 23.3 |
| | | 8x | 0.1575 | 1.8 |
| 35 | 0.63x | 0.0380 | 17.5 | |
| | 8x | 0.2100 | 1.4 | |

*1 With C-W10xB eyepiece



| Objectives | Working distance (mm) | Zoom magnification | NA | Actual FOV*1 |
|------------|-----------------------|--------------------|--------|--------------|
| Achro | 189 | 1x | 0.0145 | 44 |
| | | 8x | 0.0525 | 5.5 |
| ED Plan | 117 | 1x | 0.0218 | 29.3 |
| | | 8x | 0.0788 | 3.7 |
| Plan | 78 | 1x | 0.0290 | 22 |
| | | 8x | 0.1050 | 2.75 |

*1 With C-W10xB eyepiece

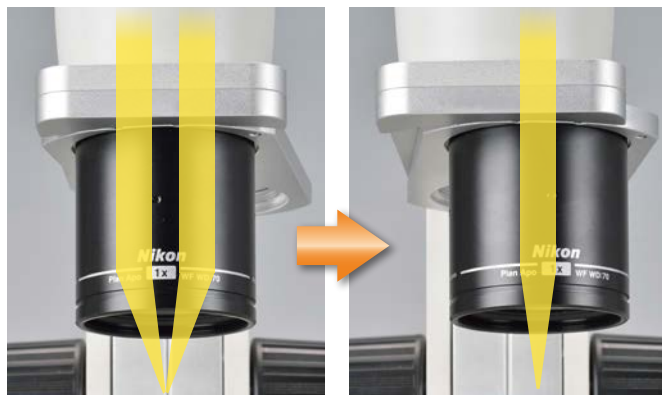
Auxiliary Objectives

| Microscopes | Auxiliary objectives | Working distance (mm) |
|-------------|----------------------|-----------------------|
| SMZ745/745T | G-AL ERG 0.77-1.06x | 102-48 |
| | G-AL 0.5x | 211 |
| | G-AL 0.7x | 150 |
| | G-AL 1.5x | 61 |
| | G-AL 2x | 43.5 |

| Microscopes | Auxiliary objectives | Working distance (mm) |
|-------------|----------------------|-----------------------|
| SMZ445/460 | AL5 (0.5x) | 181 |
| | AL7 (0.7x) | 127.5 |
| SMZ-2 | AL5 (0.5x) | 103 |
| | AL7 (0.7x) | 95 |

Nosepieces

Double nosepiece with two-objective switchover. Easy changeover from stereo position (stereoscopic view) to mono position (on-axis view) is possible by simply moving the objective lens to the right.



Stereoscopic view

On-axis view

P-RN2 Nosepiece SMZ1270/1270i SMZ800N

Observations with wider zoom ranges are possible by simply switching between two objectives.



P-RN12 Intelligent Nosepiece SMZ1270i

Enables easy switchover between two objectives. In combination with the Digital Sight series digital camera, it automatically detects the data of objective in use.



Tubes/Eye-level Riser SMZ1270/1270i SMZ800N

Various ergonomic tubes with different inclination angles enable suitable eye levels to be selected for observation, even when an intermediate tube or illuminator is attached. Trinocular tubes are also equipped with camera ports.

P-B Binocular Tube

20° inclination angle allows observation without having to lean forward and reduces fatigue during long-time operations.



P-TERG100/P-TERG50 Trinocular Tilting Tube

Allows continuous adjustment of the eyepiece inclination from 0° to 30°. Optical path switching ratio of eyepiece:camera port is 100:0/0:100 with P-TERG100 and 100:0/50:50 with P-TERG50.



P-TERG100 Trinocular Tilting Tube

P-TL100 Trinocular Tube

15° of inclination angle allows observation with comfortable posture even when using a thick stand or intermediate tube. Optical path switching ratio of eyepiece:camera port is 100:0/0:100.



P-IER Eye-level Riser

Increases the eyepoint height 25 mm per riser for a total of 50 mm.



Intermediate Tubes SMZ1270/1270i SMZ800N

Various intermediate accessories are available that can be inserted between the microscope zooming body and tube.

P-IBSS2 Beam Splitter S2

Using a beam splitter and camera adapter, a digital camera can be attached to the binocular eyepiece tube for imaging. Optical path switching ratio of left eyepiece:right eyepiece:camera port is 100:100:0/100:50:50.

P-THSS Teaching Head

Simultaneous observation of the same viewfield is possible between the eyepiece lenses of both teaching head and microscope, making it ideal for educational purposes. The pointer can indicate target points in the viewfield during observation.

P-IDT Drawing Tube

Drawing sample images is possible by simply tracing observed images that are overlaid on top of drawings within the viewfield. The drawings can be removed from view by using the knob to block the light path.

Stages

Stages allow smooth sample movement in order to change viewfield during observation.

C-SSL Dia-sliding Stage

Used for diascopic observation, this sliding stage can be easily moved in the desired direction simply with a light push. Travel range is within $\phi 38\text{mm}$.

SMZ1270/1270i SMZ800N
SMZ745/745T SMZ445/460

Can be used with the SMZ25 and SMZ18



Circular Floating Stage 2

Used for episcopic observation. Loaded with a sample, the stage can be easily moved in the desired direction simply with a light push to its edges. Travel range is within $\phi 40\text{mm}$.

SMZ1270/1270i SMZ800N
SMZ745/745T SMZ-2
SMZ445/460

Can be used with the SMZ25 and SMZ18



C-TRS Tilting Stage

This stage has a nonslip sheet and can be tilted 30° from its horizontal position.

SMZ1270/1270i SMZ800N
SMZ745/745T SMZ445/460
SMZ-2

Can be used with the SMZ25 and SMZ18



P-SXY XY Stage

The stage features an XY stroke of $150\text{ mm} \times 65\text{ mm}$. By attaching AZ100 stage adapters, it can be used for various applications. It can be used with both diascopic and episcopic illuminators.

SMZ1270/1270i SMZ800N
SMZ745/745T SMZ445/460



Observation Attachments

Various observation accessories are available that utilize diascopic and episcopic illuminations. They can be used for samples that are difficult to observe using standard illumination.

P-EFL Epi-fluorescence Attachment

Up to four epi-fluorescence filter cubes can be mounted. The fly-eye lens provides bright illumination up to the viewfield periphery.

SMZ1270/1270i
SMZ800N



P-DF LED Darkfield Unit

Equipped with the white light LED as the light source. Simply placing the unit on the stage enables darkfield observation.

SMZ1270/1270i
SMZ800N
SMZ745/745T



C-POL Polarizing Attachment

Simple polarizing observation is possible by placing the polarizer on the stage while the analyzer is attached to the tip of the objective lens.

SMZ1270/1270i SMZ800N
SMZ745/745T



Illumination Systems

Ring Illuminator

Provides a cone of light from above the sample to the center, minimizing unwanted shadow. Suitable for observation of electronic substrates.



C-FIR Plastic Fiber-optics Ring Illuminator

Illuminator is located away from microscope. It enables bright observation with high-intensity light without damaging sample with its heat.

SMZ1270/1270i SMZ800N SMZ745/745T
SMZ445/460 SMZ-2



LMS100 x 60-15W LED Ring Light

Color temperature is adjusted to 6500K \pm 500K to provide stable illumination. Two types of covers are available. Anti-electrostatic type

SMZ1270/1270i SMZ800N SMZ745/745T
SMZ445/460 SMZ-2



SM-LW61Ji3 LED Ring Illuminator

Three types of covers are available (clear, diffuser and opaque white). Anti-electrostatic type

SMZ1270/1270i SMZ800N SMZ745/745T
SMZ445/460 SMZ-2

* G-OBA60 Adapter is required.

Arm Illuminator/Episcopic Illuminator

The direction and angle of the illumination can be changed with simple adjustments of the flexible arm.



C-FID2 Double Arm Fiber Illuminator

It enables bright observation with high-intensity light without damaging sample with its heat. The direction and angle of illumination can be changed using the flexible arms.

SMZ1270/1270i SMZ800N
SMZ745/745T SMZ445/460
SMZ-2



C-FDF Flexible Double Arm Fiber Illumination Unit

It enables bright observation with high-intensity light without damaging sample with its heat. The direction and angle of illumination can be changed using the fiber holder.

SMZ1270/1270i SMZ800N
SMZ745/745T SMZ445/460



C-LSL LED Episcopic Illuminator

In combination with C-PSN Plain Stand/CN and C-PSCN Compact Stand/CN, illumination angle flexibility is possible from the back of the microscope.

By attaching arms, flexible change of direction and angle of illumination is possible.

SMZ1270/1270i SMZ800N SMZ745/745T SMZ445/460



Coaxial Illuminator

Suitable for brightfield observation for high-reflectance flat surface samples such as polished metals and wafers.

P-CI Coaxial Episcopic Illuminator

Coaxial illuminator for parallel optics-type stereo microscopes. Provides high-intensity illumination for the entire view field.

*1/4 λ plate is required

SMZ1270/1270i SMZ800N



G-ICIL LED Coaxial Episcopic Illuminator

Coaxial illuminator for Greenough-type stereo microscopes. Equipped with both coaxial episcopic and oblique illumination, which illuminates from behind the microscope.

SMZ745/745T



Stands



C-PSN Plain Stand/CN, C-PSCN Compact Stand/CN

Offers a comfortable work area and allows easy handling of samples. C-PSCN has a small base that saves desk space.



P-PS32 Plain Stand

Features a slim design with a $\phi 180$ mm stage plate and 160 mm width between the pillar and optical axis to boost working efficiency.



C-LEDS Hybrid LED Stand

Both episcopic and diasopic observations are possible and can be conducted simultaneously. The space-saving built-in illuminator can be switched and adjusted with ease.

| | | | |
|---------------------------|--|---|---|
| Type | Episcopic | Episcopic | Episcopic/Diascopic |
| Illumination method | — | — | Epi-oblique*, brightfield |
| Built-in filter | — | — | — |
| Fine focus knob | — | — | — |
| Observation magnification | With all objectives, at all zoom ranges | With all objectives, at all zoom ranges | With all objectives, at all zoom ranges |
| Microscopes | SMZ1270/1270i SMZ800N SMZ745/745T SMZ445/460 P-PS32 can be used with the SMZ18. | | |

* The illumination area is limited by conditions of use.



C-DS Diascopic Stand S

Features a hand rest for comfortable operation. Used in conjunction with C-DSL32 LED Unit for Dia Illumination Stand.



P-DSL32 LED Diascopic Illumination Stand

The OCC illumination system allows colorless and transparent samples to be observed in high relief. Compact slim-type base enhances operation efficiency.



P-DSF32 Fiber Diascopic Illumination Stand

Light source is located away from microscope, enabling bright observation with high-intensity light without damaging sample with its heat.

| | | | |
|---------------------------|---|---|---|
| Type | Diascopic | Diascopic | Diascopic |
| Illumination method | Brightfield | Brightfield, OCC** | Brightfield, OCC** |
| Built-in filter | — | Not required ($\phi 45$ mm filter slot provided) | NCB11, ND4/16 |
| Fine focus knob | — | Included | Included |
| Observation magnification | With all objectives, at all zoom ranges | 0.5x objective is compatible with zoom magnifications higher than 1.5x. | 0.5x objective is compatible with zoom magnifications higher than 1.5x. |
| Microscopes | SMZ1270/1270i SMZ800N SMZ745/745T SMZ445/460 P-DSL32 and P-DSF32 can be used with the SMZ18. | | |

** Conditions of use vary depending on objective in use.

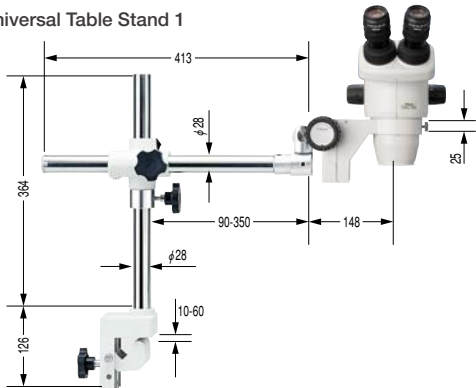
Universal Table Stands/Focusing Mounts

Universal Table Stands G-US1/G-US2

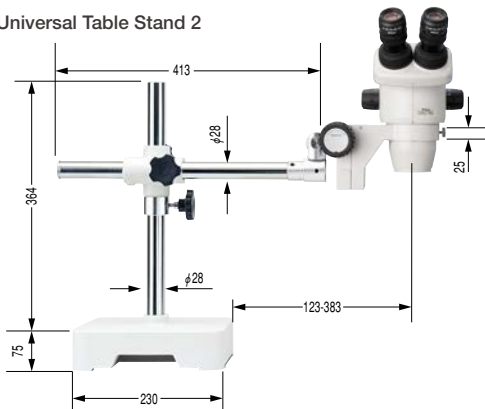
These stands are handy in microscopy with large samples not loaded onto the standard stand. The microscope zooming body is mounted to the stand arm via a focusing mount. The G-US1 is a table clamp type (table top thickness: 10 to 60 mm).

- Used in conjunction with the C-FMBN Focusing Mount BN on the SMZ1270/1270i/800N/SMZ745/745T/445/460.
- Used in conjunction with the SM Focusing Mount and the G-USA SM US Adapter on the SMZ-2.
- Cannot be used with the SMZ1270/1270i/800N when intermediate tube is mounted on these models.

G-US1 Universal Table Stand 1



G-US2 Universal Table Stand 2



Unit: mm

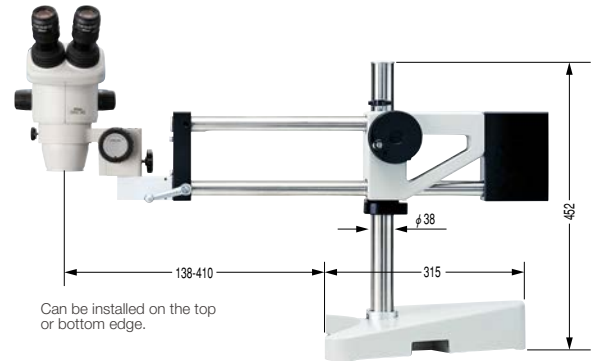
The image is a configuration sample with the SMZ745.

Universal Table Stand P

Not only can it be used for a large sample, but this extremely stable stand also easily accommodates intermediate tubes.

- Used in conjunction with the C-FMAN Focusing Mount AN on the SMZ1270/1270i/800N/745/745T/445/460.
- Used in conjunction with the SM Focusing Mount on the SMZ-2.

Universal Stand P



Can be installed on the top or bottom edge.

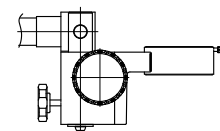
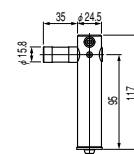
The image is a configuration sample with the SMZ745.
Unit: mm

Specifications

| Model | Universal Table Stand | | |
|--------------------------|-----------------------|--------|--------|
| | G-US1 | G-US2 | P |
| Vertical cross travel | 245mm | 229mm | 229mm |
| Horizontal cross travel | 260mm | 272mm | 272mm |
| Weight (approx.) | 4.4kg | 23.0kg | 30.5kg |
| C-FMAN Focusing Mount AN | — | — | ○ |
| C-FMBN Focusing Mount BN | ○ | — | — |
| C-FMCN Focusing Mount CN | — | — | — |
| SM Focusing Mount | ○* | — | ○ |

○: Possible * G-USA Adapter is required

G-USA Adapter

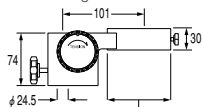


The image is a configuration sample with the SM Focusing Mount.

Focusing Mounts

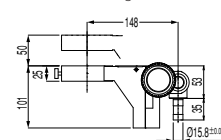
Various types of focusing mounts are available depending on use. They are used to incorporate stereo microscope bodies into IC bonders or other devices (SM Focusing Mount is for SMZ-2). These mounts can also be used when attaching microscopes to Universal Table Stands.

C-FMAN Focusing Mount AN
SM Focusing Mount

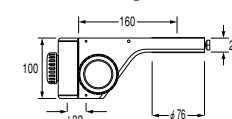


φ76mm: C-FMAN Focusing Mount AN
φ62mm: SM Focusing Mount

C-FMBN Focusing Mount BN



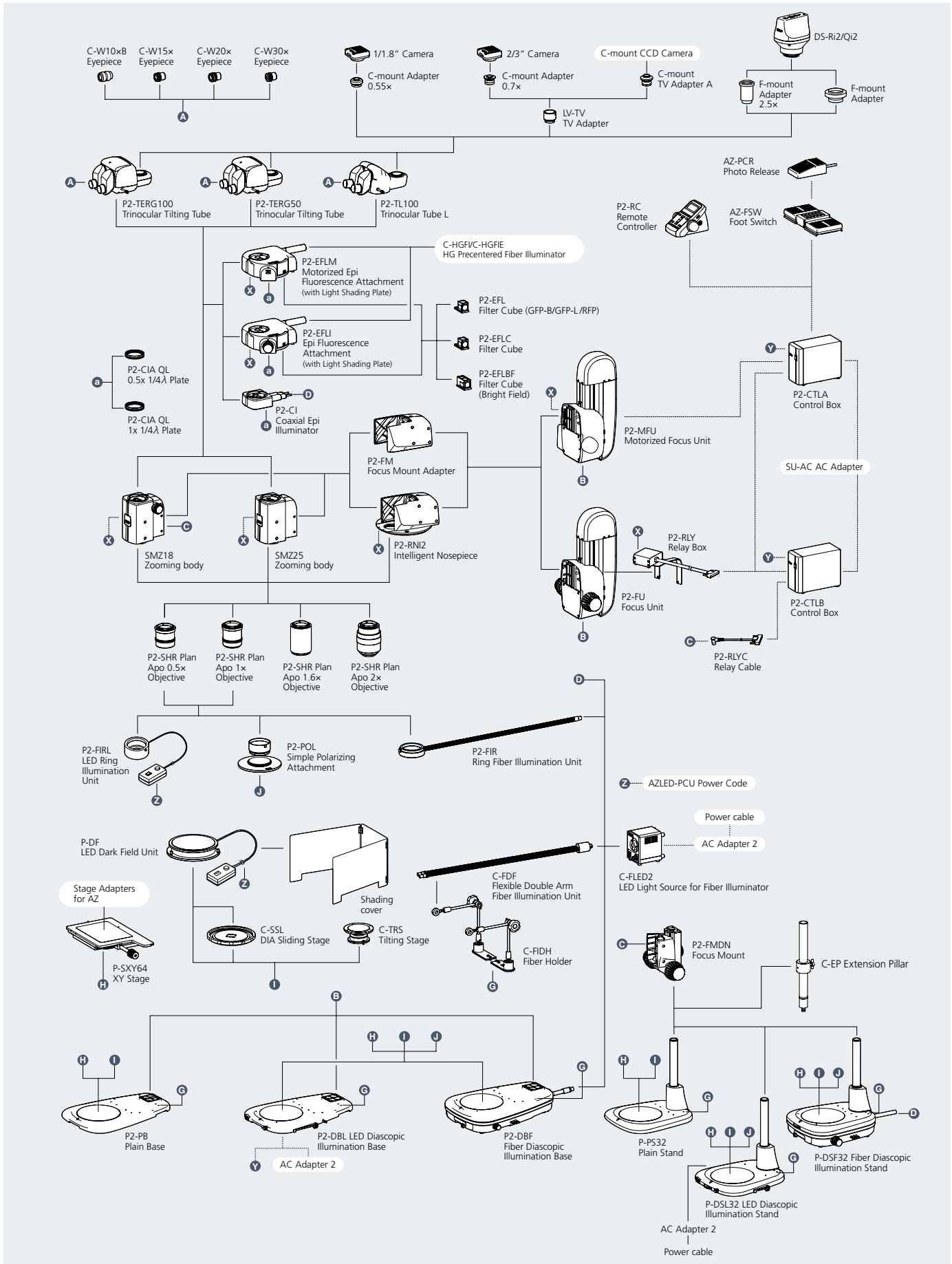
C-FMCN Focusing Mount CN



Unit: mm

| | C-FMAN Focusing Mount AN | C-FMBN Focusing Mount BN | C-FMCN Focusing Mount CN | SM Focusing Mount |
|------------------------|-------------------------------------|--------------------------|--------------------------|-------------------|
| Focusing area | 40mm | 50mm | 50mm | 40mm |
| Weight (approx.) | 0.6kg | 0.8kg | 1.6kg | 0.6kg |
| Antistatic function | ○ | ○ | — | — |
| Compatible microscopes | SMZ1270/1270i/800N/745/745T/445/460 | | | SMZ-2 |

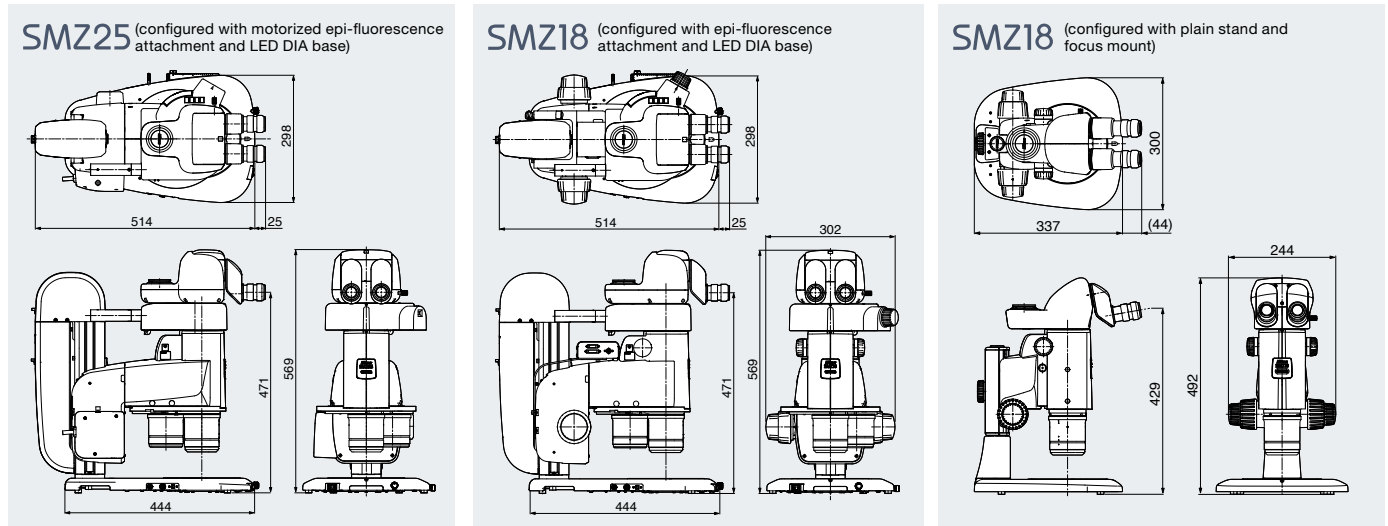
System Diagrams (SMZ25/SMZ18)



Specifications/Dimensions (SMZ25/SMZ18)

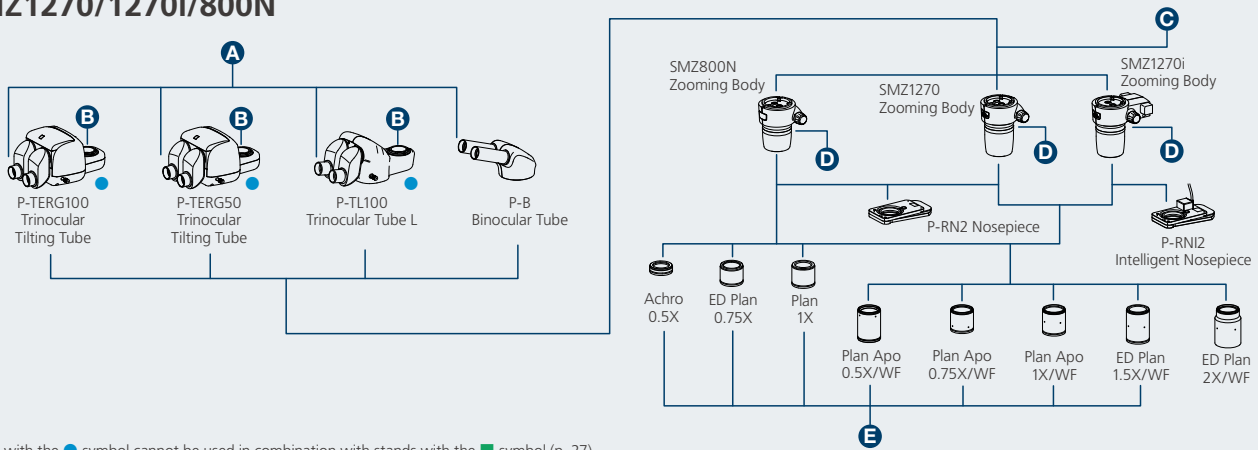
| Specifications | | SMZ25 | SMZ18 |
|--|--|---|-------|
| Zooming body | | | |
| Optical system | Parallel-optics type (zooming type), apochromatic optical system | | |
| Zoom | Motorized | Manual | |
| Zoom ratio | 25:1 | 18:1 | |
| Zoom range | 0.63-15.75x | 0.75-13.5x (with 0.75/1/2/3/4/5/6/8/10/12/13.5x click stops) | |
| Aperture diaphragm | Zooming body built-in | | |
| Objectives NA, WD (mm) | | | |
| P2-SHR Plan Apo 2x | 0.312, 20 (with a correction ring for water 0 to 3 mm in depth) | 0.3, 20 (with a correction ring for water 0 to 3 mm in depth) | |
| P2-SHR Plan Apo 1.6x | 0.25, 30 | 0.24, 30 | |
| P2-SHR Plan Apo 1x | 0.156, 60 | 0.15, 60 | |
| P2-SHR Plan Apo 0.5x | 0.078, 71 | 0.075, 71 | |
| Total Magnification (using C-W10xB eyepieces) | 3.15-315x (depending on objective used) | 3.75-270x (depending on objective used) | |
| Eyepieces (F.O.V. mm) | <ul style="list-style-type: none"> • C-W10xB (22) • C-W 15x (16) • C-W 20x (12.5) • C-W 30x (7) | | |
| Tubes (eyepiece/port) | <ul style="list-style-type: none"> • P2-TERG 100 Trinocular Tilting Tube (100/0 : 0/100) • P2-TERG 50 Trinocular Tilting Tube (100/0 : 50/50) Inclination angle : 0-30 degree • P2-TL100 Trinocular Tube L (100/0 : 0/100) Inclination angle : 15 degree | | |
| Focusing Unit (stroke from objective's parfocal point) | <ul style="list-style-type: none"> • P2-MFU Motorized Focus Unit (up 96 mm/down 4 mm) • P2-FU Focus Unit (up 97 mm/down 5 mm) | | |
| Focus mount adapter/nosepiece | <ul style="list-style-type: none"> • P2-FM Focus Mount Adapter • P2-RNI2 Intelligent Nosepiece (2 objectives can be attached) • P2-FMDN Focus Mount (for P-PS32/P-DSL32/P-DSF32 stands) | | |
| Bases/stand | <ul style="list-style-type: none"> • P2-PB Plain Base • P2-DBL LED Diascopic Illumination Base (OCC illuminator built-in) • P2-DBF Fiber Diascopic Illumination Base • P-PS32 Plain Stand (only for SMZ18) • P-DSL32 LED Diascopic Illumination Stand (OCC illuminator built in) (only for SMZ18) • P-DSF32 Fiber Diascopic Illumination Stand (only for SMZ18) | | |
| Stages | <ul style="list-style-type: none"> • P-SXY64 Stage • C-SSL DIA Sliding Stage • C-TRS Tilting Stage | | |
| Observation methods | Bright Field, Epi Fluorescence, Simple Polarizing (with P2-POL Simple Polarizing Attachment), Dark Field (with P-DF LED Dark Field Unit), Oblique Lighting | | |
| Epi-fluorescence attachments | 4 filter cubes mountable, fly-eye lens built-in | | |
| Epi-fluorescence light sources | <ul style="list-style-type: none"> • P2-EFLM Motorized Epi Fluorescence Attachment • P2-EFLI Epi Fluorescence Attachment • HG Precentered Fiber Illuminator Intensilight C-HGFIE HG/C-HGFI HG (130W) • P2-FIRL LED Ring Illumination Unit | | |
| Episcopic illuminators | Use with fiber light source | | |
| Episcopic light source | <ul style="list-style-type: none"> • P2-CI Coaxial Epi Illuminator • P2-FIR Ring Fiber Illumination Unit • C-FDF Flexible Double Arm Fiber Illumination Unit • C-FLED2 LED Light Source for fiber illuminator | | |
| Weight (approx.) | 32 kg (Motorized Epi Fluorescence Attachment configuration with Trinocular Tilting Tube, Motorized Focus Unit, Intelligent Nosepiece, LED DIA Base and Objectives 1x and 0.5x) | 30 kg (Epi Fluorescence Attachment configuration with Trinocular Tilting Tube, Focus Unit, Intelligent Nosepiece, LED DIA Base and Objectives 1x and 0.5x) | |
| Power consumption (approx.) | 30W (Motorized Epi Fluorescence Attachment configuration with Trinocular Tilting Tube, Motorized Focus Unit, Intelligent Nosepiece and LED DIA Base) | 10W (Epi Fluorescence Attachment configuration with Trinocular Tilting Tube, Focus Unit, Intelligent Nosepiece and LED DIA Base) | |

Dimensions



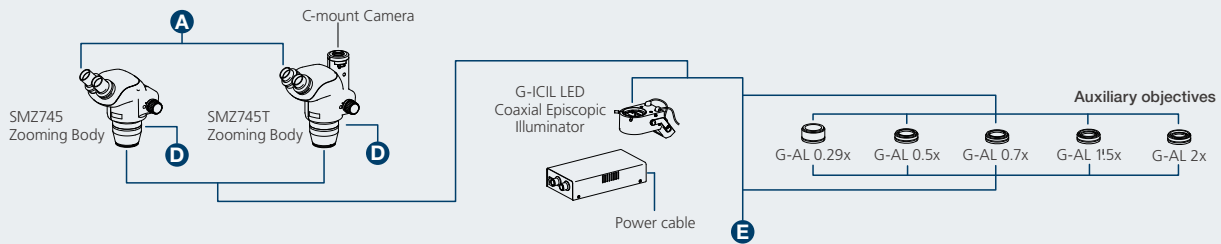
System Diagrams (SMZ1270/1270i, SMZ800N, SMZ745/745T)

SMZ1270/1270i/800N

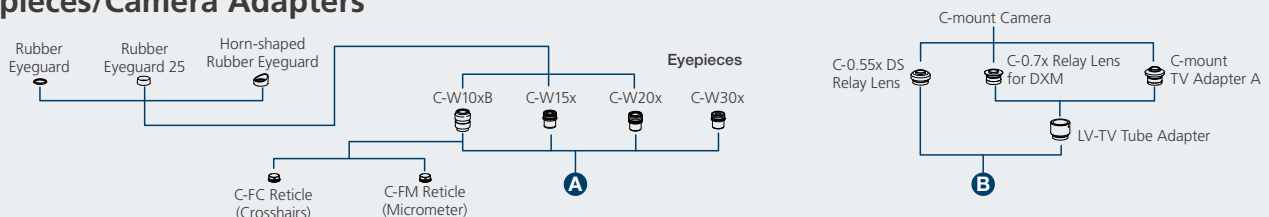


Tubes with the ● symbol cannot be used in combination with stands with the ■ symbol (p. 27).

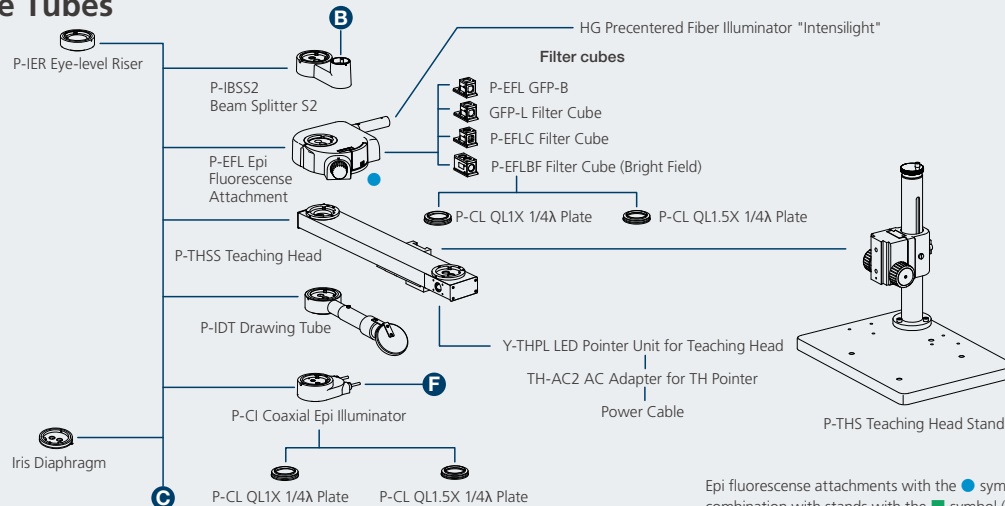
SMZ745/745T



Eyepieces/Camera Adapters

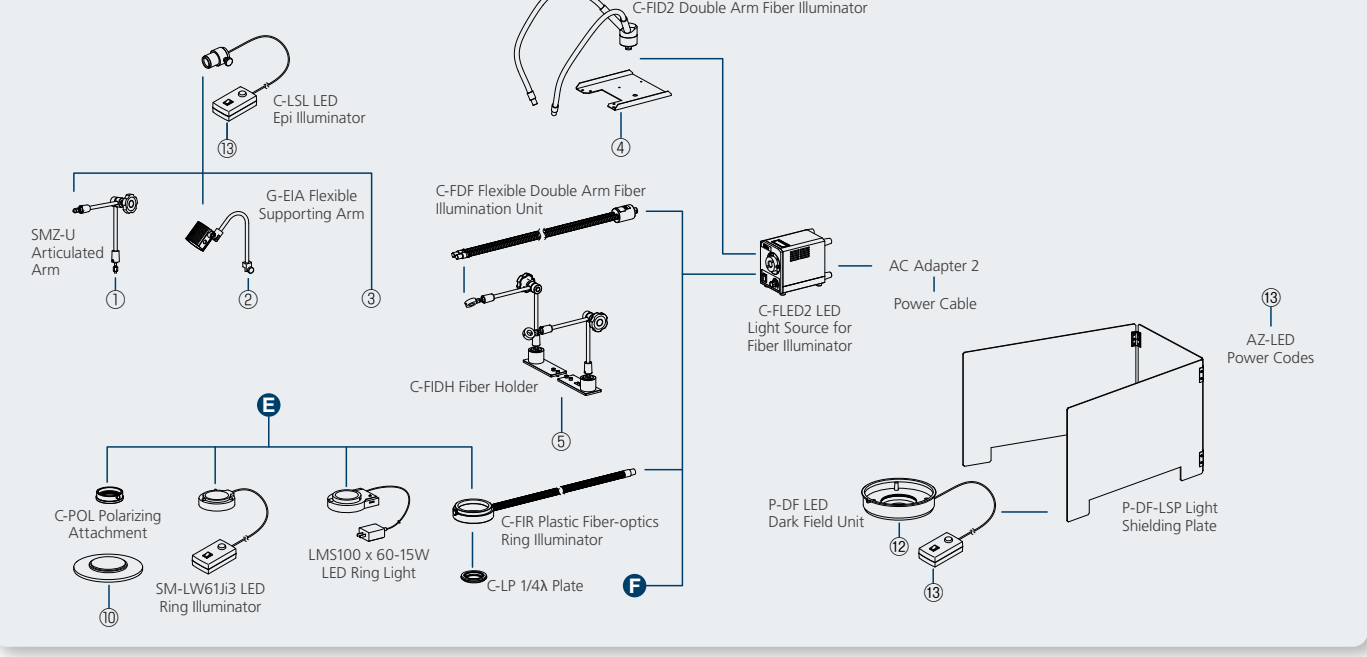


Intermediate Tubes

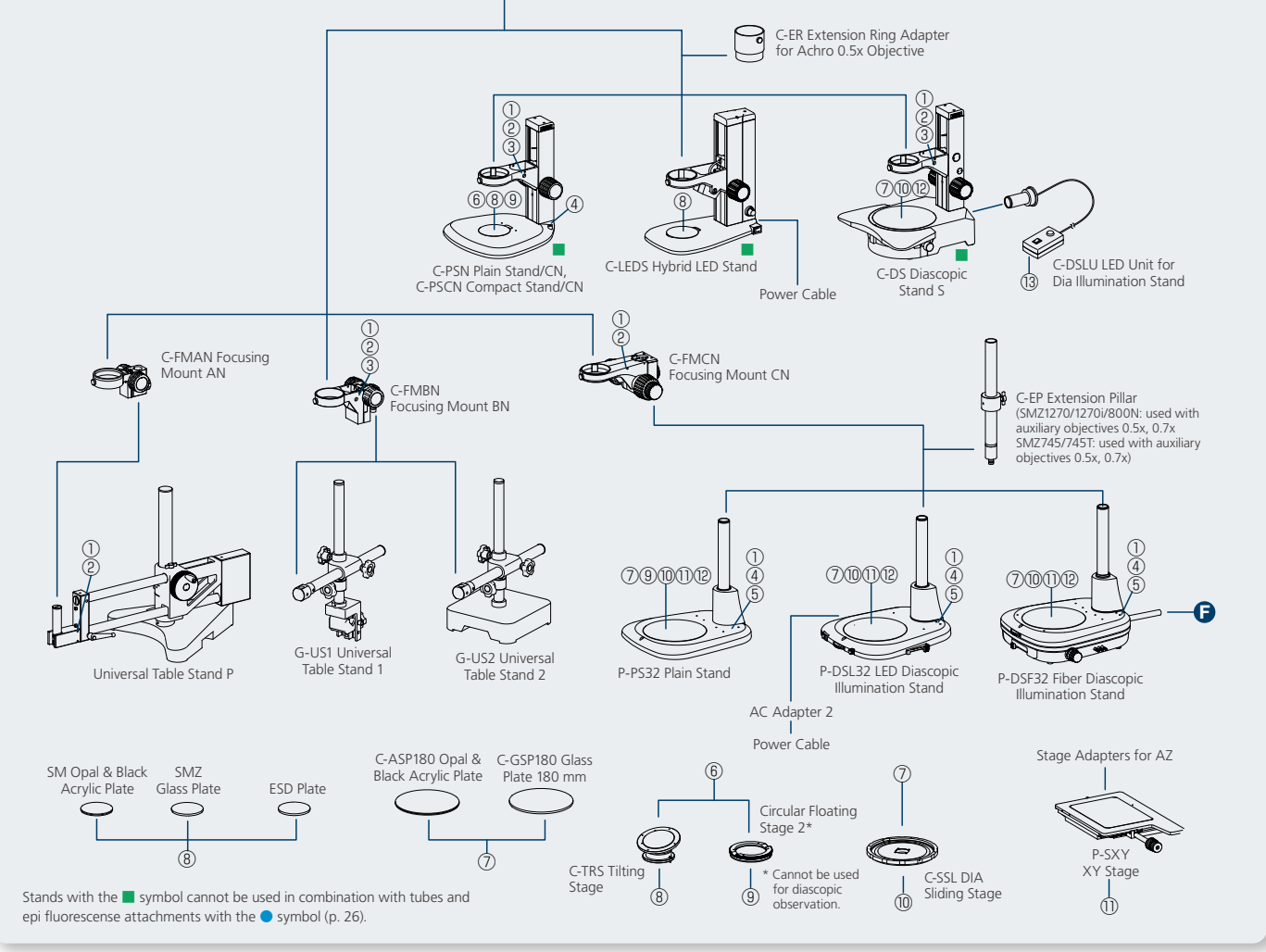


Epi fluorescence attachments with the ● symbol cannot be used in combination with stands with the ■ symbol (p. 27).

Illuminators



Stands/Stages



Specifications

| Parallel-optics type | | |
|---|---|---|
| Model | SMZ25 | SMZ18 |
| Optical system | Parallel-optics type (zooming type) | |
| Zoom ratio | 25:1 | 18:1 |
| Zoom range | 0.63-15.75x | 0.75-13.5x |
| Total magnification* (When coaxial episcopic illuminator is attached) | 3.15-945x (12.5-472x) | 3.75-810x (19-405x) |
| Tubes | P2-TERG 100 Trinocular Tilting Tube, P2-TERG 50 Trinocular Tilting Tube, P2-TL100 Trinocular Tube L | |
| Eyepiece inclination | P2-TERG 100/50: 0°-30°, P2-TL100: 15° | |
| Interpupillary distance adjustment | P2-TERG 100/50: 50 mm or wider P2-TL100: 50-75mm | |
| Eyepieces | C-W10xB (F.N. 22), C-W15x (F.N. 16), C-W20x (F.N. 12.5), C-W30x (F.N. 7) (with diopter adjustment) | |
| Objectives | P2-SHR Plan Apo 0.5x, P2-SHR Plan Apo 1x, P2-SHR Plan Apo 1.6x, P2-SHR Plan Apo 2x | |
| Working distance (with standard configuration or 1x objective) | 60 mm | |
| Weight (approx.) | 32 kg (motorized Epi Fluorescence Attachment configuration) | 10 kg (with Plain Stand and Ring LED set) |

* Depending on eyepiece and objective used

| Greenough type | | |
|--|--|---|
| Model | SMZ745/745T | SMZ445 |
| Optical system | Greenough type (zooming type) Trinocular Tube (SMZ745T) | Greenough type (zooming type) |
| Zoom ratio | 7.5 : 1 | 4.4 : 1 |
| Zoom range | 0.67-5x | 0.8-3.5x |
| Total magnification* | 3.35-300x | 4-70x |
| Tubes | Fixed (binocular tube: SMZ745, trinocular tube: SMZ745T) | Fixed |
| Eyepiece inclination | 45° | 45° |
| Interpupillary distance adjustment | 52-75mm | 54-75mm |
| Eyepieces | C-W10xB (F.N. 22), C-W15x (F.N. 16), C-W20x (F.N. 12.5), C-W30x (F.N. 7) (with diopter adjustment) | SM 10xB (F.N. 21), SM 15xB (F.N. 14), SM 20xB (F.N. 12) |
| Objectives | — | — |
| Auxiliary objectives | G-AL 0.5x (W.D. 211mm), 0.7x (W.D. 150mm), 1.5x (W.D. 61mm), 2x (W.D. 43.5mm) | SM-AL 0.5x, 0.7x |
| Working distance (with standard configuration or 1x objective) | 115mm | 100mm |
| Weight (approx.) | 1.6kg (SMZ745 body) 1.8kg (SMZ745T body) | 1.0kg (body) |

* Depending on eyepiece and objective used

| SMZ1270 | SMZ1270i | SMZ800N |
|--|--|--|
| Parallel-optics type (zooming type) | | |
| 12.7:1 | | 8:1 |
| 0.63 – 8x | | 1 – 8x |
| 3.15 – 480x (depending on eyepiece and objectives) (with coaxial episcopic illuminator: 15 – 540x) | | 5 – 480x (depending on eyepiece and objectives) (coaxial episcopic illuminator: 22.5 – 540x) |
| P-B Binocular Tube, P-TL100 Trinocular Tube, P-TERG 100 Trinocular Tilting Tube, P-TERG 50 Trinocular Tilting Tube | | |
| P-B: 20° P-TL100: 15° P-TERG100/50: 0°-30° | | |
| P-B: 48–75mm P-TL100: 50–75mm P-TERG100/50: 50 mm or wider | | |
| C-W10xB (F.N. 22), C-W15x (F.N. 16), C-W20x (F.N. 12.5), C-W30x (F.N. 7) (with diopter adjustment) | | |
| Plan Apo 0.5x/WF, Plan Apo 0.75x/WF, Plan Apo 1x/WF, ED Plan 1.5x/WF, ED Plan 2x/WF | | Plan Apo 0.5x/WF, Plan Apo 0.75x/WF, Plan Apo 1x/WF, ED Plan 1.5x/WF, ED Plan 2x/WF, Plan 1x, ED Plan 0.75x, Achro 0.5x |
| 70 mm | | 78 mm |
| 9.8 kg (with Binocular Tube + LED Diascopic Illumination Stand) | 11.9 kg (with Trinocular Tilting Tube + LED Diascopic Illumination Stand) | 6.8 kg (with Binocular Tube + Plain Stand) |

| SMZ460 | SMZ-2 |
|---|---|
| Greenough type (zooming type) | |
| 4.3 : 1 | 5 : 1 |
| 0.7–3x | 0.8–4x |
| 3.5–60x | 4–120x |
| Fixed | |
| 60° | 45° |
| 54–75mm | 56–75mm |
| SM 10xB (F.N. 21), SM 15xB (F.N. 14), SM 20xB (F.N. 12) | SM E10xA (F.N. 23, standard), SM E15xA (F.N. 14), SM 20xB (F.N. 12), C-W30x (F.N. 7) |
| — | 0.8-4x |
| SM-AL 0.5x (W.D. 181mm), 0.7x (W.D. 127.5mm) | AL5 (0.5x, W.D. 103mm), AL7 (0.7x, W.D. 95mm) |
| 100mm | 77.5mm |
| 1.1kg (body) | 1.6kg (body), 1.9kg (Stand) |

Related Products

Digital Cameras for Microscopes

Camera Head

Microscope Camera

DS-Ri2 NEW

16.25-megapixel Color High-resolution



Monochrome Microscope Camera

DS-Qi2 NEW

16.25-megapixel Monochrome Cooled

* DS-Ri2 and DS-Qi2 do not require DS-U3 and DS-L3.

High-definition color camera head

DS-Fi2

5.0-megapixel Color High-resolution

High-definition cooled color camera head

DS-Fi1c

5.0-megapixel Color Cooled High-resolution

High-speed color camera head

DS-Vi1

2.0-megapixel Color



PC-use Control Unit

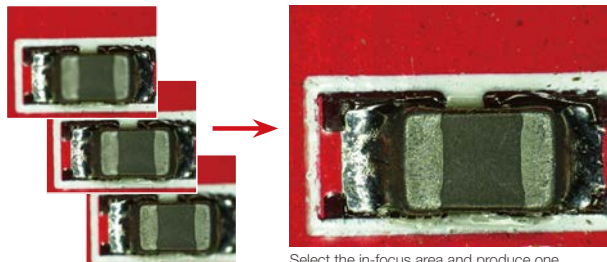
DS-U3 + **NIS-Elements** Imaging Software

Enables a wide range of advanced digital imaging capabilities using a PC

EDF (Extended Depth of Focus)

option: Ar Br D

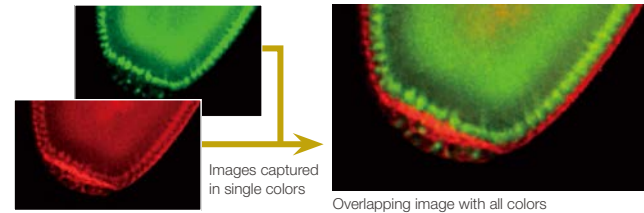
Captures multiple high-resolution images at different focal depths to create a single extended depth of focus image or quasi-3D image.



Select the in-focus area and produce one all-in-focus image

Multichannel (multicolor)

Multiple fluorescent channels can be captured in conjunction with other imaging methods, such as OCC or brightfield.



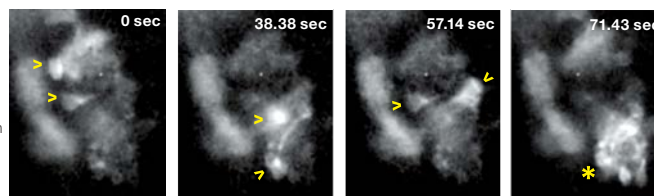
Individual cells resolved in a live drosophila embryo expressing GFP and mCherry

(Using SHR Plan Apo 2x at zoom magnification of 8x with SMZ25)
Image courtesy of Max V. Staller, Ph.D., Clarissa Scholes, and Angela DePace, Ph.D., Harvard Medical School

Time lapse

NIS-Elements makes it easy to set up a time-lapse imaging experiment.

(Using SHR Plan Apo 2x at zoom magnification of 9x with SMZ25 and camera head DS-Qi1)
Image courtesy of Joe Fetcho, Ph.D., Cornell University



Calcium-imaging: Time-lapse imaging of GCaMP expressing neurons inside a live zebrafish shows individual neurons firing at different times (arrowheads). The last time-frame shows a whole cluster of neurons firing (asterisk).

Standalone Control Unit

DS-L3



Offers an easy-to-use high-definition, large-touch-panel monitor that can be used to quickly capture images without the use of a PC or monitor.

Scene mode

Optimal imaging parameters for each sample type and observation method can easily be set using the icons.

| Scene mode (bioscience) | Scene mode (industrial) |
|--|-------------------------|
| Darkfield/fluorescence | Wafer/IC-chip |
| Differential interference/phase contrast | Metal/ceramic |
| Brightfield | Board |
| HE staining | FPD |
| Enzyme labeled antibody method | |

Various tools

Simple measurements of acquired image are possible, allowing lines and comments to be added to image data. In addition, data storage and output functions for a wide range of applications are available.

Measurement function

- Distance
- Perpendicular
- Distance between circle centers
- Angle
- Circle (perimeter/diameter)
- Area
- Pitch distance

Scale display/positioning functions

- SCALE
- XSCALE
- GRID
- XY MEAS
- X HAIRS

Drawing functions

- Count mark
- Text input
- Free curved line

Digital Microscope

ShuttlePix

ShuttlePix provides 20x optical zoom. Its magnification information is also linked to ShuttlePix's scale and simple measurement functions.

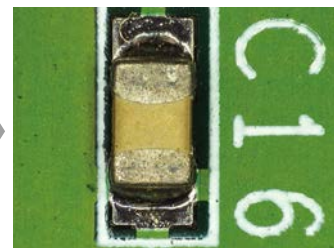
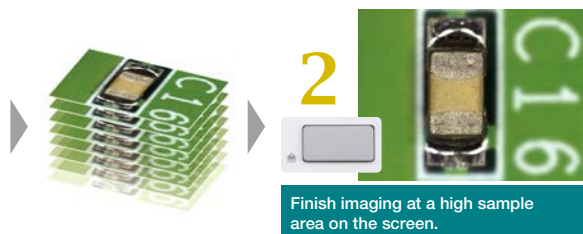
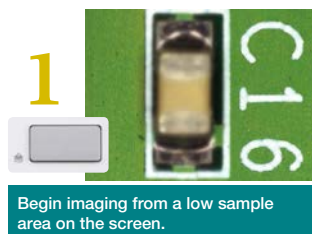


Easy imaging

- Step. 1** Turn on the power.
- Step. 2** Adjust magnifications and focusing while observing the monitor.
- Step. 3** Press the image capture button.



One touch EDF imaging



Others

Handy set

- A cordless body (built-in illuminator, compatible with SD card, battery-powered)
- Easy operation



Simple stand set

- Simple reflection stand that requires no battery
- Diascopic LED stand enables diascopic imaging
- Automatically uploads images to a PC



Multi-purpose Zoom Microscope

MULTIZOOM AZ100 AZ100M

- Wide magnification range
- Various observation methods in the macro region are possible depending on samples and purpose.

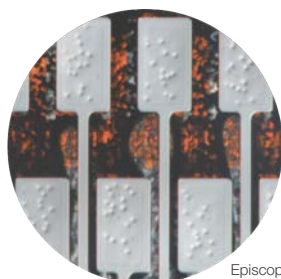


Wide magnification range

0.5x, 1x, 2x, 4x and 5x objectives are available. Used in combination with the AZ-W10x eyepiece and a coaxial episcopic illuminator, the AZ100 series covers the full range of 5x to 500x magnifications.

Various observation methods

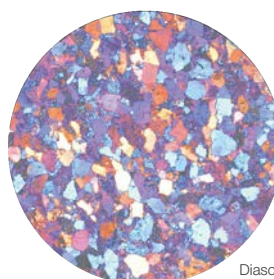
The AZ series mono-zoom mechanism enables true on-axis image capture in the macro region. The AZ series supports a wide array of observation methods, including epi-fluorescence, reflected/transmitted light brightfield, simple POL and differential interference contrast



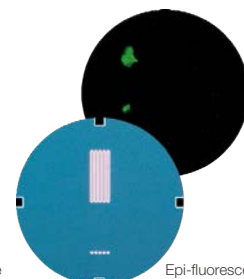
Episcopic DIC



Epi-fluorescence



Diascopic simple polarizing



Epi-fluorescence and diascopic DIC

Optical Systems

Parallel-optics type (zooming type)

This system has a parallel optical path into which various intermediate tubes, including a beam splitter, coaxial episcopic illuminator, epi-fluorescence attachment, teaching head, drawing tube and eye-level riser, can be inserted.

Greenough type (zooming type)

Allows a compact body that is suited for incorporation into other devices.

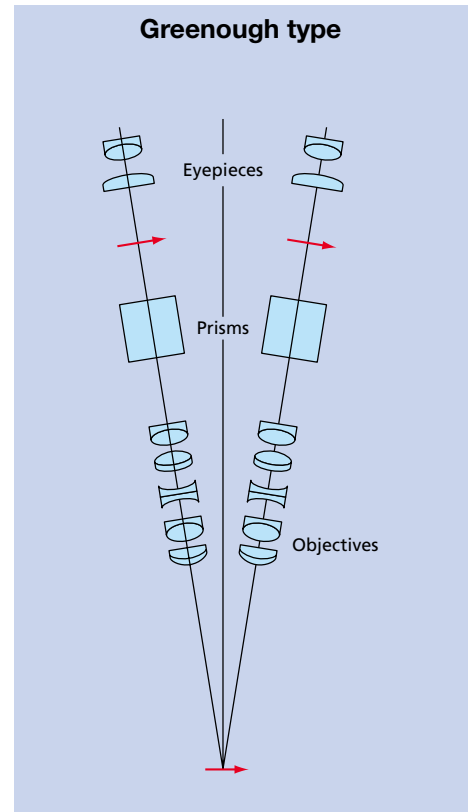
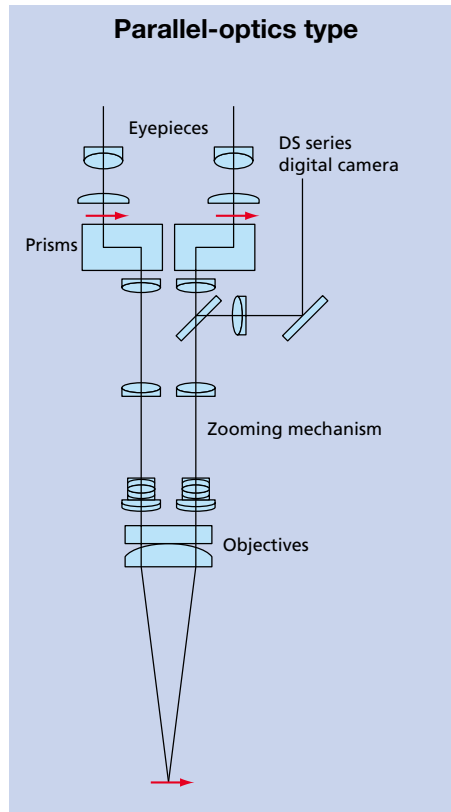


Image used in page 2 composite image courtesy of Julie C. Canman, Ph.D., Columbia University

N.B. Export of the products* in this catalog is controlled under the Japanese Foreign Exchange and Foreign Trade Law. Appropriate export procedure shall be required in case of export from Japan.

*Products: Hardware and its technical information (including software)

Specifications and equipment are subject to change without any notice or obligation on the part of the manufacturer. March 2015

©2007-15 NIKON CORPORATION

| | |
|---|--|
|  WARNING | TO ENSURE CORRECT USAGE, READ THE CORRESPONDING MANUALS CAREFULLY BEFORE USING YOUR EQUIPMENT. |
|---|--|



ryf ag



Ryf AG

Bettlachstrasse 2

2540 Grenchen

tel 032 654 21 00

fax 032 654 21 09

www.ryfag.ch