



Leica StereoZoom®

Technical information

Living up to Life

ryf ag  Ryf AG
Bettlachstrasse 2
2540 Grenchen
tel. 032 654 21 00
fax 032 654 21 09
www.ryfag.ch

Leica
MICROSYSTEMS

Technical data, performance features

StereoZoom®	Leica S4 E	Leica S6	Leica S6 E	Leica S6 T	Leica S6 D
Optical system, lead-free	12°-Greenough using best-corrected central part of the objective	12°-Greenough using best-corrected central part of the objective	12°-Greenough using best-corrected central part of the objective	12°-Greenough using best-corrected central part of the objective	12°-Greenough using best-corrected central part of the objective
Zoom	4.8:1	6.3:1	6.3:1	6.3:1	6.3:1
Viewing angles	38°	60°	38°	38°	38°
ESD protection	antistatic	antistatic	antistatic	Terminator (dissipating)	antistatic
Specific surface resistivity	$2 \times 10^{11} \Omega$ /square, discharge time <2 seconds from 1000 V to 100 V	$2 \times 10^{11} \Omega$ /square, discharge time <2 seconds from 1000 V to 100 V	$2 \times 10^{11} \Omega$ /square, discharge time <2 seconds from 1000 V to 100 V	10^2 – $10^6 \Omega$ /square, discharge time <0.1 seconds from 1000 V to zero	$2 \times 10^{11} \Omega$ /square, discharge time <2 seconds from 1000 V to 100 V
Magnification range (basic outfit)	6.3x – 30x	6.3x – 40x	6.3x – 40x	6.3x – 40x	6.3x – 40x
Max. resolution	372 lp/mm	432 lp/mm	432 lp/mm	432 lp/mm	432 lp/mm
Max. numerical aperture	0.124	0.144	0.144	0.144	0.144
Working distance (basic outfit)	110 mm	110 mm	110 mm	110 mm	110 mm
Object field	36.5 mm	36.5 mm	36.5 mm	36.5 mm	36.5 mm
Adjustable Zoomstops		2	2	2	2
Video/photo outlet, switchable					100 % visual or 100% video/photo and 100% visual in the left eyepiece
Photography with coaxial light					yes
Standard objectives, lead-free	Achromats 0.32x, 0.5x, 0.63x, 0.75x, 1.6x, 2.0x	Achromats 0.32x, 0.5x, 0.63x, 0.75x, 1.6x, 2.0x	Achromats 0.32x, 0.5x, 0.63x, 0.75x, 1.6x, 2.0x	Achromats 0.32x, 0.5x, 0.63x, 0.75x, 1.6x, 2.0x	Achromats 0.32x, 0.5x, 0.63x, 0.75x, 1.6x, 2.0x
ErgoObjectives™	0.6x–0.75x / 77–137 mm 0.7x–1.0x / 48–98 mm	0.6x–0.75x / 77–137 mm 0.7x–1.0x / 48–98 mm	0.6x–0.75x / 77–137 mm 0.7x–1.0x / 48–98 mm	0.6x–0.75x / 77–137 mm 0.7x–1.0x / 48–98 mm	0.6x–0.75x / 77–137 mm 0.7x–1.0x / 48–98 mm
Adjustable Objectives	0.3x–0.4x / 200–350mm	0.3x–0.4x / 200–350mm	0.3x–0.4x / 200–350mm	0.3x–0.4x / 200–350mm	0.3x–0.4x / 200–350mm
Ergonomic eyepieces, fixed and adjustable, with cups	10x/23, 16x/16, 20x/12	10x/23, 16x/16, 20x/12	10x/23, 16x/16, 20x/12	10x/23, 16x/16, 20x/12	10x/23, 16x/16, 20x/12
Ergonomic eyepieces, adjustable, with cups	10x/23, 16x/15, 25x/9.5, 40x/6	10x/23, 16x/15, 25x/9.5, 40x/6	10x/23, 16x/15, 25x/9.5, 40x/6	10x/23, 16x/15, 25x/9.5, 40x/6	10x/23, 16x/15, 25x/9.5, 40x/6
Interpupillary Distance	55–75 mm	55–75 mm	55–75 mm	55–75 mm	55–75 mm

StereoZoom® is a trademark registered in the Principal Register of the «US Patent and Trademark Office».

Accessories

Leica S8 APO
12°-Greenough using best-corrected central part of the objective
8:1, apochromatic
38°
antistatic
2×10 ¹¹ Ω/square, discharge time <2 seconds from 1000 V to 100 V
10× – 80×
600 lp/mm
0.2
75 mm
23 mm
2
100 % visual or 100% video/photo and 100% visual in the left eyepiece
yes
Apochromats 0.63×, 1.6×, 2.0× Achromat 0.32×
10×/23, 16×/15, 25×/9.5, 40×/6
55–75 mm

Stands, illumination	
Incident-light stands	Antistatic and terminator (dissipating)
Focusing drives	Coarse, fine, inclinable for OEM applications (bonders), adjustable ease of movement
Focusing range	135mm
Microscope carrier	Optics carrier rotatable through 360°
Swingarm stands	<ul style="list-style-type: none"> • ESD swingarm stand • Standard swingarm stand with easy-glide horizontal arm (ball bearings) • Large Swingarm stand with easy-glide horizontal arm and crank for comfortable height positioning
FlexArm	For fitting to stage and wall
Incident-light stand LED 2000	Integrated incident LED lighting with 5 programmable presets
Transmitted-light stands	<ul style="list-style-type: none"> • Sub-base for transmitted light with moveable mirror for inclined illumination • Incident-light stands bright field, bright/dark field • High-performance base
Transmitted light stand LED 2500	Integrated 6-fold adjustable LED lighting for incident and transmitted light
Stages	Gliding stage, cup stage, polarizer
Illumination	<ul style="list-style-type: none"> • Leica KL200 LED and L2 antistatic cold-light sources for direct linking to stand • Various fibre-optic light guides • Accessories for coaxial, vertical and transmitted light • Leica LED1000 (ring, spot and transmitted-light insert) • Leica LED3000 NVI™ near vertical illumination with LED-technology

Accessories	
Measurement graticules	For length measurements and counting
Vertical/oblique observation (S4 E/S6 models)	All-round 45° side view of the specimen
Objective protective-glass	Protects against dirt and damage
Digital image-recording systems (S6 D/S8 APO)	Various digital image-recording systems for routing to high-end, FireWire Leica DFC camera line
Digital camera for stereomicroscopes without photo tube	Leica DC160
Image archiving and processing software	<ul style="list-style-type: none"> • Leica Application Suite (LAS): Extended Annotations, Interactive Measurement, Live Measurement, Montage, Multi-Time, Reticule, Web Sharing
Video (S6 D/S8 APO)	Various video objectives and adapters for commercial CCD cameras

Optical data StereoZoom® Leica S4 E, S6 E, S6, S6 T, S6 D

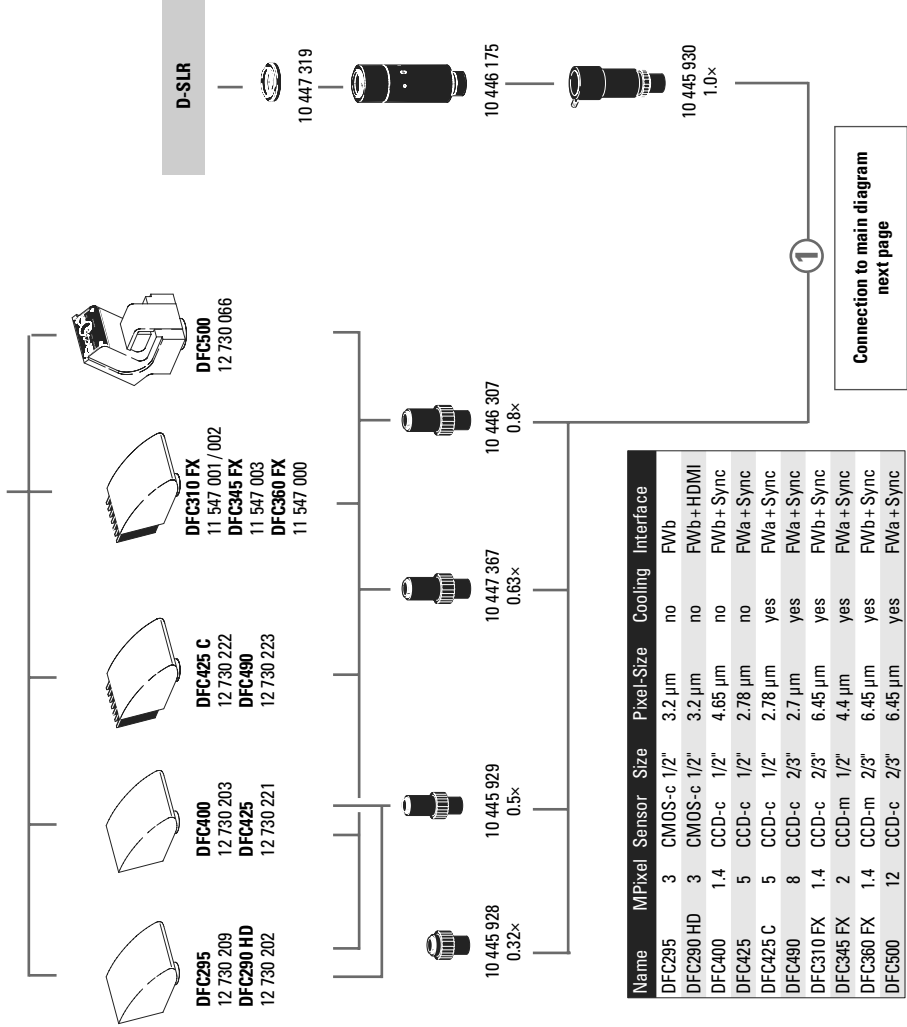
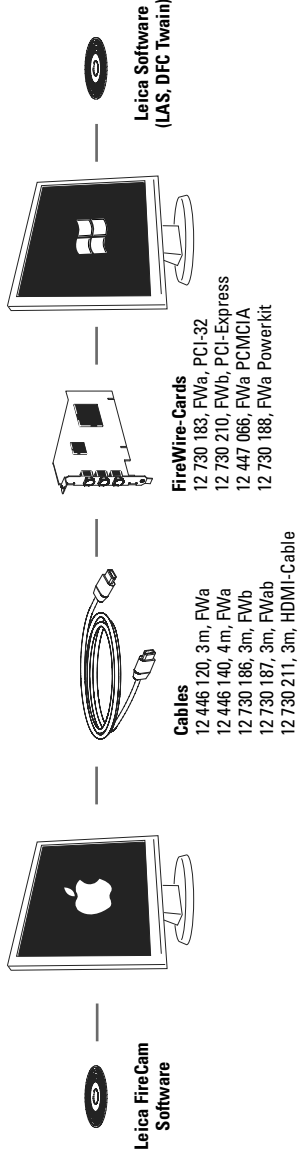
				with additional objectives									
				0.32x		0.5x		0.63x		0.75x		1.6x	
Working distance		110 mm		300 mm		200 mm		155 mm		133 mm		55 mm	
Eyepieces	Zoom-position	Total Magnification	Object-field mm	Total Magnification	Object-field mm	Total Magnification	Object-field mm	Total Magnification	Object-field mm	Total Magnification	Object-field mm	Total Magnification	Object-field mm
10x/23 10 447 130 10 447 131 10 447 136 10 447 137	0.63	6.3	36.5	2.0	115.0	3.2	71.9	4.0	57.5	4.0	57.5	4.7	48.9
	0.8	8.0	28.8	2.6	88.5	4.0	57.5	5.0	46.0	6.0	38.3	12.8	18.0
	1.0	10.0	23.0	3.2	71.9	5.0	46.0	6.3	36.5	7.5	30.7	16.0	14.4
	1.25	12.5	18.4	4.0	57.5	6.3	36.5	7.9	29.1	9.4	24.5	20.0	11.5
	1.6	16.0	14.4	5.1	45.1	8.0	28.8	10.1	22.8	12.0	19.2	25.6	9.0
	2.0	20.0	11.5	6.4	35.9	10.0	23.0	12.6	18.3	15.0	15.3	32.0	7.2
	2.5	25.0	9.2	8.0	28.8	12.5	18.4	15.8	14.6	18.8	12.2	40.0	5.8
	3.0	30.0	7.67	9.6	24.0	15.0	15.3	18.9	12.2	22.5	10.2	48.0	4.79
	3.2*	32.0	7.2	10.2	22.5	16.0	14.4	20.2	11.4	24.0	9.6	51.2	4.5
	4.0*	40.0	5.8	12.8	18.0	20.0	11.5	25.2	9.1	30.0	7.7	64.0	3.6
16x/16 10 447 132 10 447 133 10 446 354 10 446 355	0.63	10.1	25.3	3.2	80.0	5.0	51.2	6.4	40.0	7.6	33.7	16.1	15.9
	0.8	12.8	20.0	4.1	62.4	6.4	40.0	8.1	31.6	9.6	26.7	20.5	12.5
	1.0	16.0	16.0	5.1	50.2	8.0	32.0	10.1	25.3	12.0	21.3	25.6	10.0
	1.25	20.0	12.8	6.4	40.0	10.0	25.6	12.6	20.3	15.0	17.1	32.0	8.0
	1.6	25.6	10.0	8.2	31.2	12.8	20.0	16.1	15.9	19.2	13.3	41.0	6.2
	2.0	32.0	8.0	10.2	25.1	16.0	16.0	20.2	12.7	24.0	10.7	51.2	5.0
	2.5	40.0	6.4	12.8	20.0	20.0	12.8	25.2	10.2	30.0	8.5	64.0	4.0
	3.0	48.0	5.33	15.4	16.7	24.0	10.7	30.2	8.47	36.0	7.11	76.8	3.33
	3.2*	51.2	5.0	16.4	15.6	25.6	10.0	32.3	7.9	38.4	6.7	81.9	3.1
	4.0*	64.0	4.0	20.5	12.5	32.0	8.0	40.3	6.4	48.0	5.3	102.4	2.5
16x/15 B 10 447 138 10 447 139	0.63	10.1	23.8	3.2	74.0	5.0	47.6	6.4	37.8	7.6	31.7	16.1	14.9
	0.8	12.8	18.8	4.1	58.6	6.4	37.5	8.1	29.8	9.6	25.0	20.5	11.7
	1.0	16.0	15.0	5.1	46.9	8.0	30.0	10.1	23.8	12.0	20.0	25.6	9.4
	1.25	20.0	12.0	6.4	37.5	10.0	24.0	12.6	19.0	15.0	16.0	32.0	7.5
	1.6	25.6	9.4	8.2	29.3	12.8	18.8	16.1	14.9	19.2	12.5	41.0	5.8
	2.0	32.0	7.5	10.2	23.4	16.0	15.0	20.2	11.9	24.0	10.0	51.2	4.7
	2.5	40.0	6.0	12.8	18.8	20.0	12.0	25.2	9.5	30.0	8.0	64.0	3.8
	3.0	48.0	5.0	15.4	15.6	24.0	10.0	30.2	7.94	36.0	6.67	76.8	3.13
	3.2*	51.2	4.7	16.4	14.6	25.6	9.4	32.3	7.4	38.4	6.2	81.9	2.9
	4.0*	64.0	3.8	20.5	11.7	32.0	7.5	40.3	5.9	48.0	5.0	102.4	2.3
20x/12 10 447 134 10 447 135	0.63	12.6	19.0	4.0	60.0	6.3	38.1	7.9	30.4	9.5	25.3	20.2	11.9
	0.8	16.0	15.0	5.1	47.1	8.0	30.0	10.1	23.8	12.0	20.0	25.6	9.4
	1.0	20.0	12.0	6.4	37.5	10.0	24.0	12.6	19.0	15.0	16.0	32.0	7.5
	1.25	25.0	9.6	8.0	30.0	12.5	19.2	15.8	15.2	18.8	12.8	40.0	6.0
	1.6	32.0	7.5	10.2	23.5	16.0	15.0	20.2	11.9	24.0	10.0	51.2	4.7
	2.0	40.0	6.0	12.8	18.8	20.0	12.0	25.2	9.5	30.0	8.0	64.0	3.8
	2.5	50.0	4.8	16.0	15.0	25.0	9.6	31.5	7.6	37.5	6.4	80.0	3.0
	3.0	60.0	4.0	19.2	12.5	30.0	8.0	37.8	6.35	45.0	5.33	96.0	2.5
	3.2*	64.0	3.8	20.5	11.7	32.0	7.5	40.3	6.0	48.0	5.0	102.4	2.3
	4.0*	80.0	3.0	25.6	9.4	40.0	6.0	50.4	4.8	60.0	4.0	128.0	1.9
25x/9.5 B 10 450 025	0.63	15.8	15.0	5.0	47.5	7.9	30.1	9.9	24.0	11.8	20.1	25.2	9.4
	0.8	20.0	11.9	6.4	37.1	10.0	23.8	12.6	18.8	15.0	15.8	32.0	7.4
	1.0	25.0	9.5	8.0	29.7	12.5	19.0	15.8	15.0	18.8	12.6	40.0	5.9
	1.25	31.3	7.6	10.0	23.8	15.6	15.2	19.7	12.1	23.4	10.1	50.0	4.8
	1.6	40.0	5.9	12.8	18.6	20.0	11.9	25.2	9.4	30.0	7.9	64.0	3.7
	2.0	50.0	4.8	16.0	14.8	25.0	9.5	31.5	7.5	37.5	6.3	80.0	3.0
	2.5	62.5	3.8	20.0	11.9	31.3	7.6	39.4	6.0	46.9	5.1	100.0	2.4
	3.0	75.0	3.17	24.0	9.9	37.5	6.33	47.3	5.03	56.3	4.22	120.0	1.98
	3.2*	80.0	3.0	25.6	9.3	40.0	5.9	50.4	4.7	60.0	4.0	128.0	1.9
	4.0*	100.0	2.4	32.0	7.4	50.0	4.8	63.0	3.8	75.0	3.2	160.0	1.5
40x/6 B 10 450 026	0.63	25.2	9.5	8.1	29.6	12.6	19.0	15.9	15.1	18.9	12.7	40.3	6.0
	0.8	32.0	7.5	10.2	23.5	16.0	15.0	20.2	11.9	24.0	10.0	51.2	4.7
	1.0	40.0	6.0	12.8	18.8	20.0	12.0	25.2	9.5	30.0	8.0	64.0	3.8
	1.25	50.0	4.8	16.0	15.0	25.0	9.6	31.5	7.6	37.5	6.4	80.0	3.0
	1.6	64.0	3.8	20.5	11.7	32.0	7.5	40.3	6.0	48.0	5.0	102.4	2.3
	2.0	80.0	3.0	25.6	9.4	40.0	6.0	50.4	4.8	60.0	4.0	128.0	1.9
	2.5	100.0	2.4	32.0	7.5	50.0	4.8	63.0	3.8	75.0	3.2	160.0	1.5
	3.0	120.0	2.0	38.4	6.25	60.0	4.0	75.6	3.17	90.0	2.67	192.0	1.25
	3.2*	128.0	1.9	41.0	5.9	64.0	3.8	80.6	3.0	96.0	2.5	204.8	1.2
	4.0*	160.0	1.5	51.2	4.7	80.0	3.0	100.8	2.4	120.0	2.0	256.0	0.9

* Zoomposition 4.0 and 3.2 only for S6-models

with additional objectives													
2.0x		0.3x–0.4x		0.3x–0.4x		0.6x–0.75x		0.6x–0.75x		0.7x–1.0x		0.7x–1.0x	
35 mm		200 mm		350 mm		77 mm		137 mm		48 mm		98 mm	
Total Magnification	Object-field mm	Total Magnification	Object-field mm	Total Magnification	Object-field mm	Total Magnification	Object-field mm	Total Magnification	Object-field mm	Total Magnification	Object-field mm	Total Magnification	Object-field mm
12.6	18.3	2.5	92.0	1.8	127.8	4.7	48.9	3.5	65.7	6.2	37.1	4.5	51.1
16.0	14.4	3.1	74.2	2.2	104.5	6.0	38.3	4.5	51.1	7.9	29.1	5.7	40.4
20.0	11.5	3.9	59.0	2.8	82.1	7.5	30.7	5.6	41.1	9.9	23.2	7.1	32.4
25.0	9.2	4.9	46.9	3.5	65.7	9.4	24.5	7.0	32.9	12.4	18.5	8.9	25.8
32.0	7.2	6.2	37.1	4.5	51.1	12.0	19.2	9.0	25.6	15.8	14.6	11.4	20.2
40.0	5.8	7.8	29.5	5.6	41.1	15.0	15.3	11.2	20.5	19.8	11.6	14.2	16.2
50.0	4.6	9.8	23.5	7.0	32.9	18.8	12.2	14.0	16.4	24.8	9.3	17.8	12.9
60.	3.83	11.7	19.7	8.4	27.4	22.5	10.2	16.8	13.7	29.7	7.74	21.3	10.8
64.0	3.6	12.5	18.4	9.0	25.6	24.0	9.6	17.9	12.8	31.7	7.3	22.7	10.1
80.0	2.9	15.6	14.7	11.2	20.5	30.0	7.7	22.4	10.3	39.6	5.8	28.4	8.1
20.2	12.7	3.9	65.6	2.8	91.4	7.6	33.7	5.6	45.7	10.0	25.6	7.2	35.6
25.6	10.0	5.0	51.2	3.6	71.1	9.6	26.7	7.2	35.6	12.7	20.2	9.1	28.1
32.0	8.0	6.2	41.3	4.5	56.9	12.0	21.3	9.0	28.4	15.8	16.2	11.4	22.5
40.0	6.4	7.8	32.8	5.6	45.7	15.0	17.1	11.2	22.9	19.8	12.9	14.2	18.0
51.2	5.0	10.0	25.6	7.2	35.6	19.2	13.3	14.3	17.9	25.3	10.1	18.2	14.1
64.0	4.0	12.5	20.5	9.0	28.4	24.0	10.7	17.9	14.3	31.7	8.1	22.7	11.3
80.0	3.2	15.6	16.4	11.2	22.9	30.0	8.5	22.4	11.4	39.6	6.5	28.4	9.0
96.	2.67	18.7	13.7	13.4	19.	36.	7.11	26.9	9.52	47.5	5.39	34.1	7.51
102.4	2.5	20.0	12.8	14.3	17.9	38.4	6.7	28.7	8.9	50.7	5.0	36.4	7.0
128.0	2.0	25.0	10.2	17.9	14.3	48.0	5.3	35.8	7.2	63.4	4.0	45.4	5.6
20.2	11.9	3.9	61.5	2.8	85.7	7.6	31.6	5.6	42.9	10.0	24.0	7.2	33.3
25.6	9.4	5.0	48.0	3.6	66.6	9.6	25.0	7.2	33.3	12.7	18.9	9.1	26.4
32.0	7.5	6.2	38.7	4.5	53.4	12.0	20.0	9.0	26.7	15.8	15.2	11.4	21.0
40.0	6.0	7.8	30.8	5.6	42.9	15.0	16.0	11.2	21.4	19.8	12.1	14.2	16.9
51.2	4.7	10.0	24.0	7.2	33.3	19.2	12.5	14.3	16.8	25.3	9.5	18.2	13.2
64.0	3.8	12.5	19.2	9.0	26.7	24.0	10.0	17.9	13.4	31.7	7.6	22.7	10.6
80.0	3.0	15.6	15.4	11.2	21.4	30.0	8.0	22.4	10.7	39.6	6.1	28.4	8.5
96.	2.5	18.7	12.8	13.4	17.9	36.	6.67	26.9	8.93	47.5	5.05	34.1	7.04
102.4	2.3	20.0	12.0	14.3	16.8	38.4	6.2	28.7	8.4	50.7	4.7	36.4	6.6
128.0	1.9	25.0	9.6	17.9	13.4	48.0	5.0	35.8	6.8	63.4	3.8	45.4	5.3
25.2	9.5	4.9	49.0	3.5	68.6	9.5	25.3	7.1	33.8	12.5	19.2	8.9	27.0
32.0	7.5	6.2	38.7	4.5	53.3	12.0	20.0	9.0	26.7	15.8	15.2	11.4	21.1
40.0	6.0	7.8	30.8	5.6	42.9	15.0	16.0	11.2	21.4	19.8	12.1	14.2	16.9
50.0	4.8	9.8	24.5	7.0	34.3	18.8	12.8	14.0	17.1	24.8	9.7	17.8	13.5
64.0	3.8	12.5	19.2	9.0	26.7	24.0	10.0	17.9	13.4	31.7	7.6	22.7	10.6
80.0	3.0	15.6	15.4	11.2	21.4	30.0	8.0	22.4	10.7	39.6	6.1	28.4	8.5
100.0	2.4	19.5	12.3	14.0	17.1	37.5	6.4	28.0	8.6	49.5	4.8	35.5	6.8
120.	2.	23.4	10.3	16.8	14.3	45.	5.33	33.6	7.14	59.4	4.04	42.6	5.63
128.0	1.9	25.0	9.6	17.9	13.4	48.0	5.0	35.8	6.7	63.4	3.8	45.4	5.3
160.0	1.5	31.2	7.7	22.4	10.7	60.0	4.0	44.8	5.4	79.2	3.0	56.8	4.2
31.5	7.5	6.1	38.9	4.4	54.0	11.8	20.1	8.8	27.0	15.6	15.2	11.2	21.2
40.0	5.9	7.8	30.4	5.6	42.4	15.0	15.8	11.2	21.2	19.8	12.0	14.2	16.7
50.0	4.8	9.8	24.2	7.0	33.9	18.8	12.6	14.0	17.0	24.8	9.6	17.8	13.3
62.5	3.8	12.2	19.5	8.8	27.0	23.4	10.1	17.5	13.6	30.9	7.7	22.2	10.7
80.0	3.0	15.6	15.2	11.2	21.2	30.0	7.9	22.4	10.6	39.6	6.0	28.4	8.4
100.0	2.4	19.5	12.2	14.0	17.0	37.5	6.3	28.0	8.5	49.5	4.8	35.5	6.7
125.0	1.9	24.4	9.7	17.5	13.6	46.9	5.1	35.0	6.8	61.9	3.8	44.4	5.3
150.	1.58	29.3	8.12	21.	11.3	56.3	4.22	42.	5.65	74.3	3.2	53.3	4.46
160.0	1.5	31.2	7.6	22.4	10.6	60.0	4.0	44.8	5.3	79.2	3.0	56.8	4.2
200.0	1.2	39.0	6.1	28.0	8.5	75.0	3.2	56.0	4.2	99.0	2.4	71.0	3.3
50.4	4.8	9.8	24.5	7.1	33.8	18.9	12.7	14.1	17.0	24.9	9.6	17.9	13.4
64.0	3.8	12.5	19.2	9.0	26.7	24.0	10.0	17.9	13.4	31.7	7.6	22.7	10.6
80.0	3.0	15.6	15.4	11.2	21.4	30.0	8.0	22.4	10.7	39.6	6.1	28.4	8.5
100.0	2.4	19.5	12.3	14.0	17.1	37.5	6.4	28.0	8.6	49.5	4.8	35.5	6.8
128.0	1.9	25.0	9.6	17.9	13.4	48.0	5.0	35.8	6.7	63.4	3.8	45.4	5.3
160.0	1.5	31.2	7.7	22.4	10.7	60.0	4.0	44.8	5.4	79.2	3.0	56.8	4.2
200.0	1.2	39.0	6.2	28.0	8.6	75.0	3.2	56.0	4.3	99.0	2.4	71.0	3.4
240.	1.	46.8	5.13	33.6	7.14	90.	2.67	67.2	3.57	119.	2.02	85.2	2.82
256.0	0.9	49.9	4.8	35.8	6.7	96.0	2.5	71.7	3.3	126.7	1.9	90.9	2.6
320.0	0.8	62.4	3.8	44.8	5.4	120.0	2.0	89.6	2.7	158.4	1.5	113.6	2.1

Optical data Leica StereoZoom® S8 APO

				Apochromat						Achromat	
				0.63x		1.6x		2.0x		0.32x	
Working distance		75 mm		101 mm		37 mm		25 mm		200 mm	
Eyepieces	Zoom-position	Total Magnification	Object-field mm	Total Magnification	Object-field mm	Total Magnification	Object-field mm	Total Magnification	Object-field mm	Total Magnification	Object-field mm
10x/23 10 447 130 10 447 131 10 447 136 10 447 137	1.0	10.0	23.0	6.3	36.5	16.0	14.4	20.0	11.5	3.2	71.9
	1.25	12.5	18.4	7.9	29.1	20.0	11.5	25.0	9.2	4.0	57.5
	1.6	16.0	14.4	10.1	22.8	25.6	9.0	32.0	7.2	5.1	45.1
	2.0	20.0	11.5	12.6	18.3	32.0	7.2	40.0	5.8	6.4	35.9
	2.5	25.0	9.2	15.8	14.6	40.0	5.8	50.0	4.6	8.0	28.8
	3.2	32.0	7.2	20.2	11.4	51.2	4.5	64.0	3.6	10.2	22.5
	4.0	40.0	5.8	25.2	9.1	64.0	3.6	80.0	2.9	12.8	18.0
	5.0	50.0	4.6	31.5	7.3	80.0	2.9	100.0	2.3	16.0	14.4
16x/16 10 447 132 10 447 133	6.3	63.0	3.7	39.7	5.8	100.8	2.3	126.0	1.8	20.2	11.4
	8.0	80.0	2.9	50.4	4.6	128.0	1.8	160.0	1.4	25.6	9.0
	1.0	16.0	16.0	10.1	25.3	25.6	10.0	32.0	8.0	5.1	43.9
	1.25	20.0	12.8	12.6	20.3	32.0	8.0	40.0	6.4	6.4	35.0
	1.6	25.6	10.0	16.1	15.9	41.0	6.2	51.2	5.0	8.2	27.3
	2.0	32.0	8.0	20.2	12.7	51.2	5.0	64.0	4.0	10.2	22.0
	2.5	40.0	6.4	25.2	10.2	64.0	4.0	80.0	3.2	12.8	17.5
	3.2	51.2	5.0	32.3	7.9	81.9	3.1	102.4	2.5	16.4	13.7
16x/15 B 10 447 138 10 447 139	4.0	64.0	4.0	40.3	6.4	102.4	2.5	128.0	2.0	20.5	10.9
	5.0	80.0	3.2	50.4	5.1	128.0	2.0	160.0	1.6	25.6	8.8
	6.3	100.8	2.5	63.5	4.0	161.3	1.6	201.6	1.3	32.3	6.9
	8.0	128.0	2.0	80.6	3.2	204.8	1.3	256.0	1.0	41.0	5.5
	1.0	16.0	15.0	10.1	23.7	25.6	9.4	32.0	7.5	5.1	41.2
	1.25	20.0	12.0	12.6	19.0	32.0	7.5	40.0	6.0	6.4	32.8
	1.6	25.6	9.4	16.1	14.9	41.0	5.8	51.2	4.7	8.2	25.6
	2.0	32.0	7.5	20.2	11.9	51.2	4.7	64.0	3.8	10.2	20.6
20x/12 10 447 134 10 447 135	2.5	40.0	6.0	25.2	9.6	64.0	3.8	80.0	3.0	12.8	16.4
	3.2	51.2	4.7	32.3	7.4	81.9	2.9	102.4	2.3	16.4	12.8
	4.0	64.0	3.8	40.3	6.0	102.4	2.3	128.0	1.9	20.5	10.2
	5.0	80.0	3.0	50.4	4.8	128.0	1.9	160.0	1.5	25.6	8.3
	6.3	100.8	2.3	63.5	3.8	161.3	1.5	201.6	1.2	32.3	6.5
	8.0	128.0	1.9	80.6	3.0	204.8	1.2	256.0	0.9	41.0	5.2
	1.0	20.0	12.0	12.6	19.0	32.0	7.5	40.0	6.0	6.4	37.5
	1.25	25.0	9.6	15.8	15.2	40.0	6.0	50.0	4.8	8.0	30.0
25x/9.5 B 10 450 025	1.6	32.0	7.5	20.2	11.9	51.2	4.7	64.0	3.8	10.2	23.5
	2.0	40.0	6.0	25.2	9.5	64.0	3.8	80.0	3.0	12.8	18.8
	2.5	50.0	4.8	31.5	7.6	80.0	3.0	100.0	2.4	16.0	15.0
	3.2	64.0	3.8	40.3	6.0	102.4	2.3	128.0	1.9	20.5	11.7
	4.0	80.0	3.0	50.4	4.8	128.0	1.9	160.0	1.5	25.6	9.4
	5.0	100.0	2.4	63.0	3.8	160.0	1.5	200.0	1.2	32.0	7.5
	6.3	126.0	1.9	79.4	3.0	201.6	1.2	252.0	1.0	40.3	6.0
	8.0	160.0	1.5	100.8	2.4	256.0	0.9	320.0	0.8	51.2	4.7
40x/6 B 10 450 026	1.0	25.0	9.5	15.8	15.0	40.0	5.9	50.0	4.8	8.0	29.7
	1.25	31.3	7.6	19.7	12.1	50.0	4.8	62.5	3.8	10.0	23.8
	1.6	40.0	5.9	25.2	9.4	64.0	3.7	80.0	3.0	12.8	18.6
	2.0	50.0	4.8	31.5	7.5	80.0	3.0	100.0	2.4	16.0	14.8
	2.5	62.5	3.8	39.4	6.0	100.0	2.4	125.0	1.9	20.0	11.9
	3.2	80.0	3.0	50.4	4.7	128.0	1.9	160.0	1.5	25.6	9.3
	4.0	100.0	2.4	63.0	3.8	160.0	1.5	200.0	1.2	32.0	7.4
	5.0	125.0	1.9	78.8	3.0	200.0	1.2	250.0	1.0	40.0	5.9
40x/6 B 10 450 026	6.3	157.5	1.5	99.2	2.4	252.0	0.9	315.0	0.8	50.4	4.7
	8.0	200.0	1.2	126.0	1.9	320.0	0.7	400.0	0.6	64.0	3.7
	1.0	40.0	6.0	25.2	9.5	64.0	3.8	80.0	3.0	12.8	18.8
	1.25	50.0	4.8	31.5	7.6	80.0	3.0	100.0	2.4	16.0	15.0
	1.6	64.0	3.8	40.3	6.0	102.4	2.3	128.0	1.9	20.5	11.7
	2.0	80.0	3.0	50.4	4.8	128.0	1.9	160.0	1.5	25.6	9.4
	2.5	100.0	2.4	63.0	3.8	160.0	1.5	200.0	1.2	32.0	7.5
	3.2	128.0	1.9	80.6	3.0	204.8	1.2	256.0	0.9	41.0	5.9
40x/6 B 10 450 026	4.0	160.0	1.5	100.8	2.4	256.0	0.9	320.0	0.8	51.2	4.7
	5.0	200.0	1.2	126.0	1.9	320.0	0.8	400.0	0.6	64.0	3.8
	6.3	252.0	1.0	158.8	1.5	403.2	0.6	504.0	0.5	80.6	3.0
	8.0	320.0	0.8	201.6	1.2	512.0	0.5	640.0	0.4	102.4	2.3



Name	MPixel	Sensor	Size	Cooling	Interface
DFC295	3	CMOS-c	1/2"	3.2 µm	no FWb
DFC290 HD	3	CMOS-c	1/2"	3.2 µm	no FWb+HDMI
DFC400	1.4	CCD-c	1/2"	4.65 µm	no FWb+Sync
DFC425	5	CCD-c	1/2"	2.78 µm	no FWa+Sync
DFC425 C	5	CCD-c	1/2"	2.78 µm	yes FWa+Sync
DFC490	8	CCD-c	2/3"	2.7 µm	yes FWa+Sync
DFC310 FX	1.4	CCD-c	2/3"	6.45 µm	yes FWb+Sync
DFC345 FX	2	CCD-m	1/2"	4.4 µm	yes FWa+Sync
DFC360 FX	1.4	CCD-m	2/3"	6.45 µm	yes FWb+Sync
DFC500	12	CCD-c	2/3"	6.45 µm	yes FWa+Sync

- c: color / -m: monochrome

V X.2009

Digital camera systems
 12 730 209 Leica DFC295 camera kit
 12 730 202 Leica DFC290 HD camera kit*
 12 730 203 Leica DFC400 camera kit*
 12 730 221 Leica DFC425 camera kit
 12 730 221 Leica DFC425 C camera kit
 12 730 223 Leica DFC490 camera kit
 11 547 001 Leica DFC310 FX camera kit for Mac
 11 547 002 Leica DFC310 FX camera kit for PC
 11 547 003 Leica DFC345 FX camera kit
 11 547 000 Leica DFC360 FX camera kit
 12 730 066 Leica DFC500 camera kit
 12 730 216 Leica IC80 HD camera (incl. USB cable and LAS EZ software)

12 730 228 Stand-alone kit (power pack, video cable, HDMI-cable, SD card, HD RC remote control)
 12 730 229 Palm or foot switch with 2m cable
 *no Mac-Support

Digital camera system accessories
 12 446 120 FireWire cable, FWa, 3m, 6-pin to 6-pin
 12 446 140 FireWire cable, FWa, 4m, 6-pin to 6-pin
 12 730 186 FireWire cable, 3m, FWb, 9-pin to 9-pin
 12 730 187 FireWire cable, FWab, 3m, 6-pin to 9-pin
 12 730 211 HDMI cable, 3m, HDMI both ends
 12 730 183 OHCI FireWire PCI express card, FWa
 12 730 210 OHCI FireWire PCI express card, FWb
 12 447 066 Laptop PCMCIA FireWire interface card for FWa
 12 730 188 Laptop power kit, for use with 4-pin or unpowered 6-pin FireWire ports

Photo tubes and C-mounts
 10 447 319 Adapter T2, Canon EOS
 10 446 175 SLR projection lens 2.5, for reflex cameras with T2 thread singlelens reflex cameras on video/photo tubes
 10 445 928 0.32x video objective with C-mount for 1/3" digital cameras
 10 445 929 0.5x video objective with C-mount for 1/2" digital cameras
 10 447 367 0.63x video objective with C-mount for 2/3" digital cameras
 10 446 307 0.8x video objective with C-mount for 2/3" digital cameras
 10 445 930 1.0x video/photo objective

Eyepieces, eyecups included

- 10 447 136 10×/23B eyepiece for eyeglasses, fixed
 - 10 447 137 10×/23B eyepiece for eyeglasses, adjustable*
 - 10 447 138 16×/15B eyepiece for eyeglasses, fixed
 - 10 447 139 16×/15B eyepiece for eyeglasses, adjustable*
 - 10 447 130 10×/23 eyepiece, fixed
 - 10 447 131 10×/23 eyepiece, adjustable*
 - 10 447 132 16×/16 eyepiece, fixed
 - 10 447 133 16×/16 eyepiece, adjustable*
 - 10 447 134 20×/12 eyepiece, fixed
 - 10 447 135 20×/12 eyepiece, adjustable*
- * accept reticles

Stereomicroscopes

- 10 446 293 Leica S4 E Stereozoom® 0.63×–3.0×, 4.8:1 zoom, 38° viewing angle
- 10 446 294 Leica S6 E Stereozoom® 0.63×–4.0×, 6.3:1 zoom, 38° viewing angle
- 10 446 295 Leica S6 Stereozoom® 0.63×–4.0×, 6.3:1 zoom, 60° viewing angle
- 10 446 296 Leica S6 T Stereozoom® 0.63×–4.0×, 6.3:1 zoom, 38° viewing angle, conductive
- 10 446 297 Leica S6 D Stereozoom® 0.63×–4.0×, 6.3:1 zoom, 38° viewing angle, Video/photo tube
- 10 446 298 Leica S8 APO Stereozoom® 1.0×–8.0× with apochromatically corrected zoom optics, 8:1 zoom, 38° viewing angle, video/photo tube

Spare parts

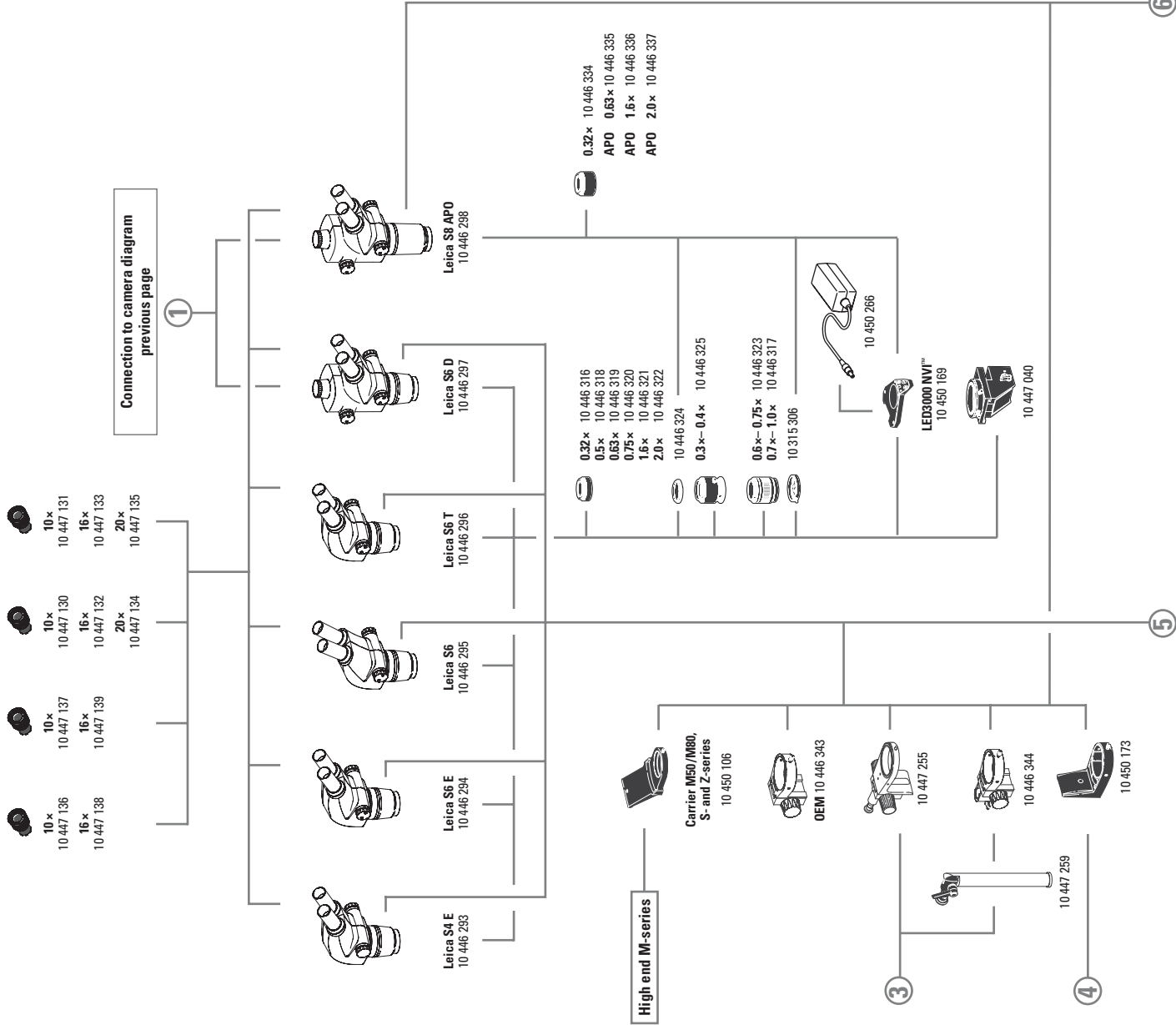
- 10 447 149 Eyecups, pair for eyepieces
- 10 447 150 Eyecups, one pair for eyepiece for eyeglasses
- 10 447 326 Zoom knobs, pair, S8 APO size

S4 E, S6 E, S6, S6 T, S6 D objectives

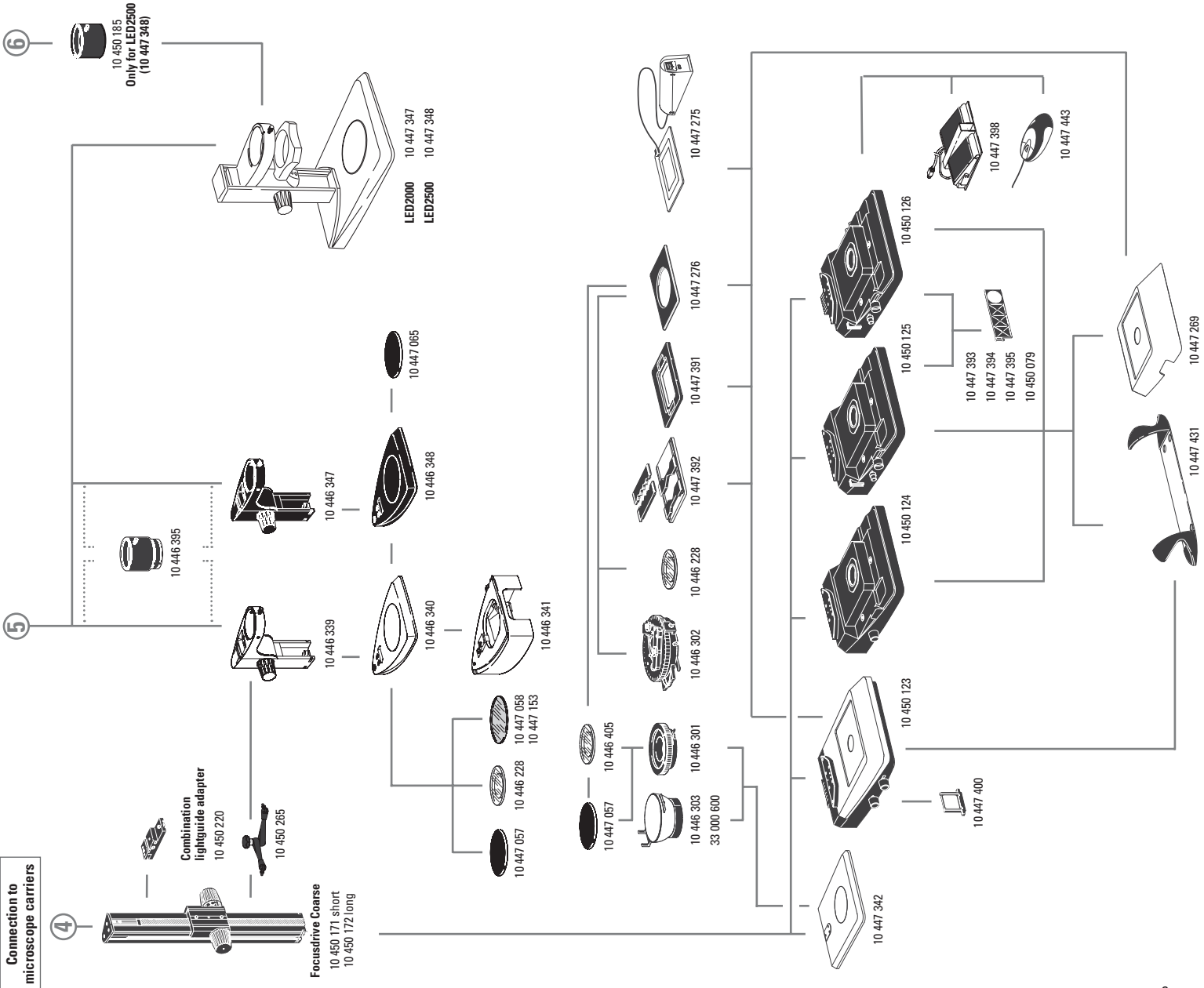
- 10 446 316 Objective 0.32×, WD 300 mm
- 10 446 318 Objective 0.5×, WD 200 mm
- 10 446 319 Objective 0.63×, WD 155 mm
- 10 446 320 Objective 0.75×, WD 130 mm
- 10 446 321 Objective 1.6×, WD 55 mm
- 10 446 322 Objective 2.0×, WD 35 mm
- 10 446 324 Lens shield for S4/S6/S6 T/S6 D APO
- 10 446 325 Adjustable objective 0.3×–0.4×, WD 200–350 mm
- 10 446 323 ErgoObjective 0.6×–0.75×, WD 77–137 mm
- 10 446 317 ErgoObjective 0.7×–1.0×, WD 48–98 mm

S8 APO objectives

- 10 446 334 Objective 0.32×, WD 200 mm
- 10 446 335 Apochromatic objective 0.63×, WD 100 mm
- 10 446 336 Apochromatic objective 1.6×, WD 37 mm
- 10 446 337 Apochromatic objective 2.0×, WD 25 mm



Connection to microscope carriers



Focusing columns/arms/carriers and accessories

- 10 446 343 Focusing arm
- 10 450 106 Microscope carrier for M50/M80, S- and Z-series
- 10 447 255 Focusing arm, inclinable for OEM and swingarm stands
- 10 446 344 Focusing arm for 25mm column
- 10 447 259 Carrier rod 25mm, inclinable
- 10 450 173 Microscope carrier for M-Series with 76 mm interface
- 10 450 169 LED3000 NVI™ – vertical illumination for M50/M80 for using objectives with major diameter 58 mm
- 10 450 266 Power supply for LED3000/LED5000
- 10 447 040 Attachment for vertical/oblique observation for S4/E/S6

- 10 450 171 Coarse focus drive with profile column 300 mm
- 10 450 172 Coarse focus drive with profile column 500 mm
- 10 450 265 Arm for fixing light guides
- 10 450 220 Combination light guide adapter for installation on the focusing column with coarse drive
- 10 446 339 Focusing column
- 10 446 347 Focusing column T, for S6 T
- 10 446 395 5 cm Extension for 0.5x objective for S4/S6

Bases and accessories

- 10 446 340 Base for S4/S6/S8 APO
- 10 446 348 Base T for S6T
- 10 446 341 Sub-base for transmitted-light
- 10 447 342 Incident-light base with insert
- 10 447 347 LED2000 – Incident light base with LED illumination
- 10 447 348 LED2500 – Incident light and transmitted-light base with LED illumination
- 10 450 185 Adapter for S8 APO to LED2500

- 10 450 123 Transmitted light base TL ST
- 10 450 124 Transmitted light base BFDF
- 10 450 125 Transmitted light base TL RC™ for external cold light sources
- 10 450 126 Transmitted-light base TL RC™ with integrated halogen illumination

- 10 447 269 Standard stage for TL BFDF, TL RC™ and TL RC™ transmitted-light bases
- 10 447 400 Daylight filter for TL ST base
- 10 447 394 BG38 filter for TL RC™/RCI™ transmitted light base
- 10 447 395 UV filter for TL RC™/RCI™ base
- 10 447 393 ND (neutral density) filter for TL RC™/RCI™ base
- 10 450 079 Daylight filter for TL RC™/TL RCI™ base

- 10 447 443 Leica USB mouse, user-programmable, five-button mouse for connection to the TL RC™ transmitted light base or PC
- 10 447 398 Foot pedal
- 10 447 431 Leica ErgoRest™ handrest for fatigue-free work

ARTICLE DESCRIPTIONS

Stages

- 10 446 301 Gliding stage, 120 mm
- 10 446 303 Cup stage, 120 mm interface, Ø100 mm
- 33 000 600 Cup stage, 120 mm interface, Ø150 mm, rotatable
- 10 447 058 Glass stage plate
- 10 447 153 Frosted glass stage plate
- 10 447 057 Black/white stage plate
- 10 447 065 Stage plate S6 T, dissipating

- 10 447 275 Leica MATS TL Heiztischsinsatz mit Steuergerät für TL-Basen
- 10 447 276 Adapter für Tische mit Ø120 mm
- 10 447 391 Tisch für LifeOnStage-Zubehör
- 10 447 392 Universalträger für Petrischalen, Objektträger

Polarization

- 10 446 228 Glass stage plate with polarizer
- 10 315 306 Analyzer in rotatable mount

Measuring

- 10 446 447 Reticle 10mm/0.1mm
- 10 446 448 Reticle 5mm/0.1mm
- 10 446 449 Reticle 5mm/0.05mm
- 10 447 000 Reticle 100 division/0.002"
- 10 447 001 Reticle 100 division/0.001"
- 10 447 002 Reticle 150 division/0.0005"
- 10 446 450 Crosshair reticle
- 10 310 345 Stage micrometer, 50mm scale with 0.1mm and 0.01mm divisions
- 10 447 037 Stage micrometer 1", 0.001" divisions

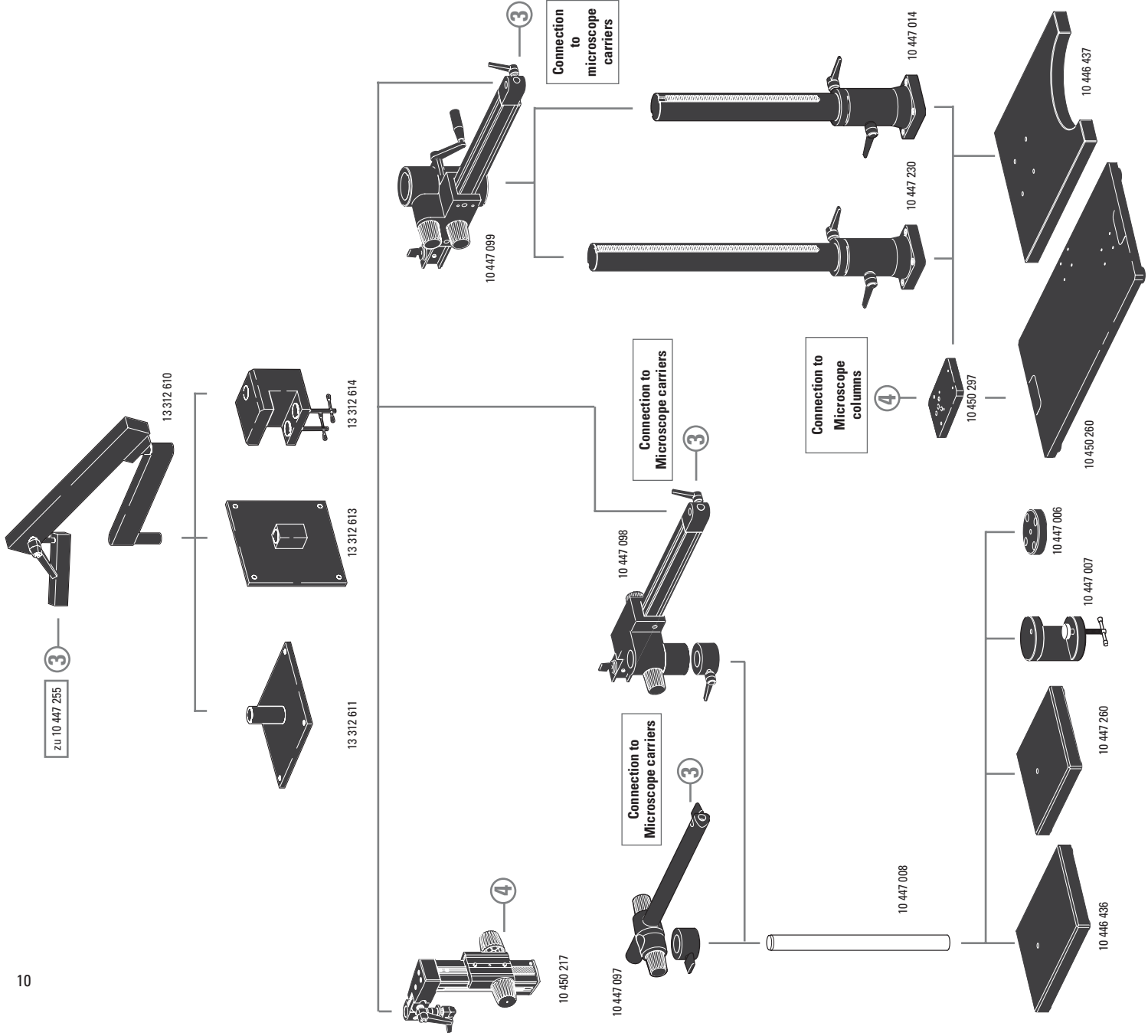
Flex arm stands

- 13 312 610 Flex arm stand
- 13 312 611 Flex arm vertical table mount
- 13 312 613 Flex arm horizontal wall mount
- 13 312 614 Flex arm stand clamp

Swingarm stands

- 10 447 260 Base plate, small
- 10 446 436 Base plate, medium
- 10 447 008 Vertical column 470/35mm
- 10 447 097 Horizontal arm, ESD
- 10 447 098 Horizontal arm, standard
- 10 447 006 Flange
- 10 447 007 Stage clamp
- 10 446 437 Base plate, large
- 10 447 014 Vertical column 560/57mm
- 10 447 230 Vertical column 800/57mm
- 10 447 099 Horizontal arm, large
- 10 450 217 Focus drive with inclinable column

- 10 450 260 Universal Base XL for specimens up to 300 x 300 mm
- 10 450 297 Adapter for universal plate 10 450 260 for all swingarm columns



Leica L2 / KL200 LED illumination

- 10 446 385 Leica L2 cold light source
- 10 447 015 Leica L2 transformer, 90 – 250V
- 10 446 374 L2 adapter for focus column
- 10 446 376 L2 adapter for focus column 300mm
- 10 446 375 L2 adapter for swingarm stand
- 10 446 377 Base plate for L2 cold light source
- 10 447 056 Halogen lamp 8 V/20 W, L2

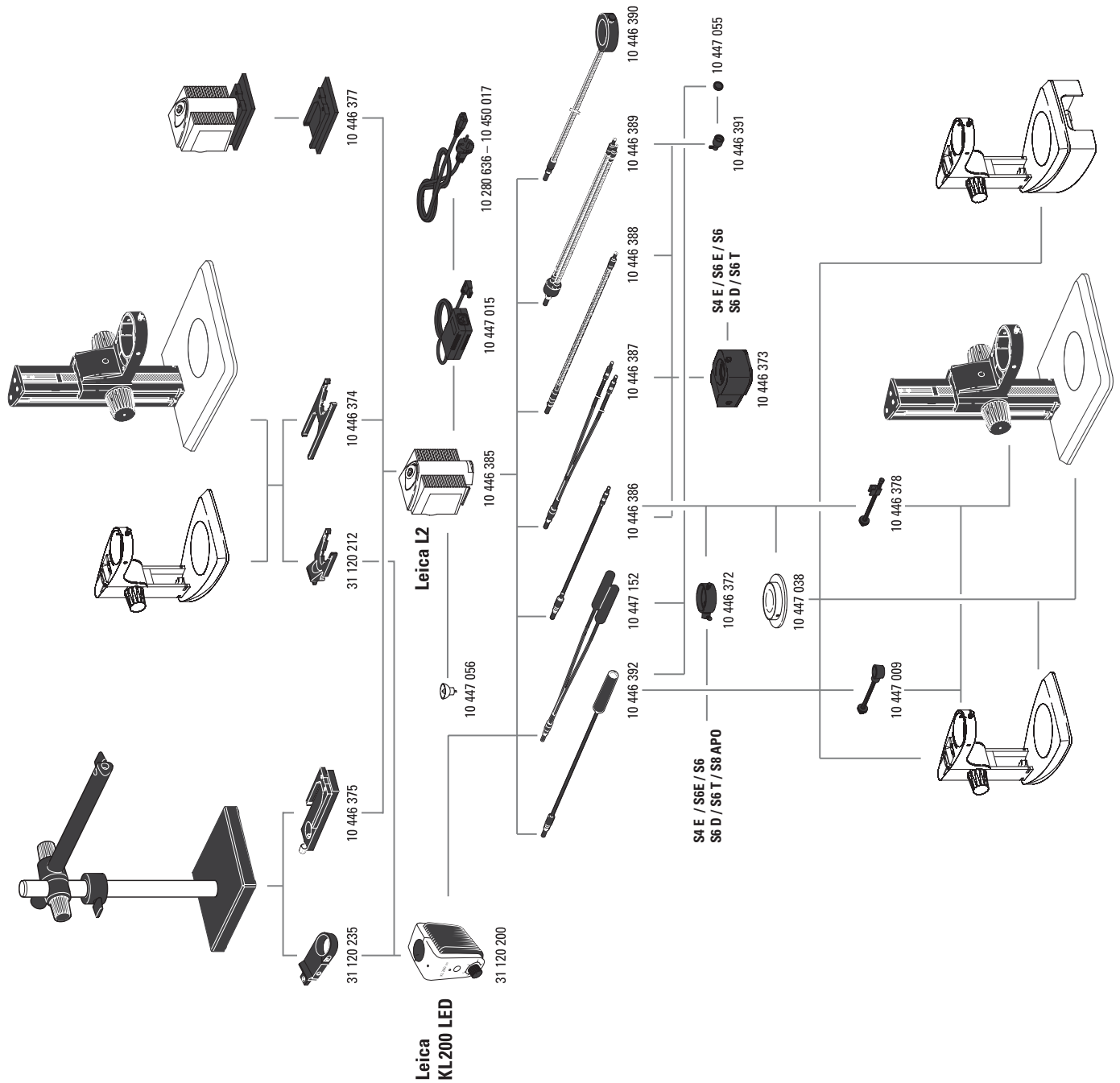
- 31 120 200 KL200 LED cold light LED source
- 31 120 212 KL200 LED adapter for focus column
- 31 120 235 KL200 LED adapter for swingarm stand

- 10 446 392 Universal light guide, 600 mm
- 10 447 317 Universal light guide, 1000 mm
- 10 447 152 Universal light guide, 2-arm, 600 mm

- 10 446 386 Flexible light guide, 1-arm, 550 mm
- 10 446 387 Flexible light guide, 2-arm, 750 mm
- 10 446 388 Gooseneck light guide 1-arm, 500 mm
- 10 446 389 Gooseneck light guide 2-arm, 500 mm
- 10 446 390 6-point ring illuminator, internal diameter 58 mm, 750 mm

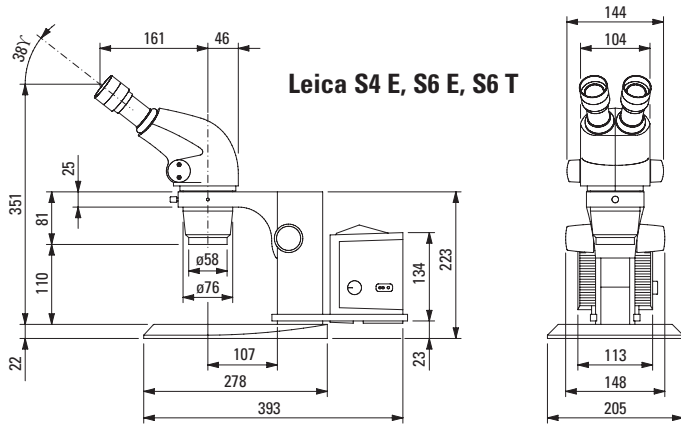
- 10 447 038 Transmitted light stage
- 10 446 391 Auxiliary focusing lens
- 10 447 055 Daylight filter for auxiliary focus
- 10 446 378 Arm for flexible light guide
- 10 447 009 Arm for universal light guide
- 10 446 372 Vertical illumination
- 10 446 373 Coaxial illumination S4/S6/S8 APO

- 10 447 015 Leica L2 transformer, 90 – 250 V
- 10 280 636 Power cable, 2 m, CH
- 10 445 661 Power cable, 2 m, with USA plug
- 10 445 662 Power cable, 2 m, with EURO plug
- 10 445 663 Power cable, 2 m, with British Standard
- 10 447 346 Power cable, 2 m, with Japan plug
- 10 450 012 Power cable, 2 m, with Argentina plug type K
- 10 450 013 Power cable, 2 m, with Australia plug type F
- 10 450 014 Power cable, 2 m, with China plug type L
- 10 450 015 Power cable, 2 m, with Israel plug type L
- 10 450 016 Power cable, 2 m, with Italy plug type E
- 10 450 017 Power cable, 2 m, with South Africa plug type D

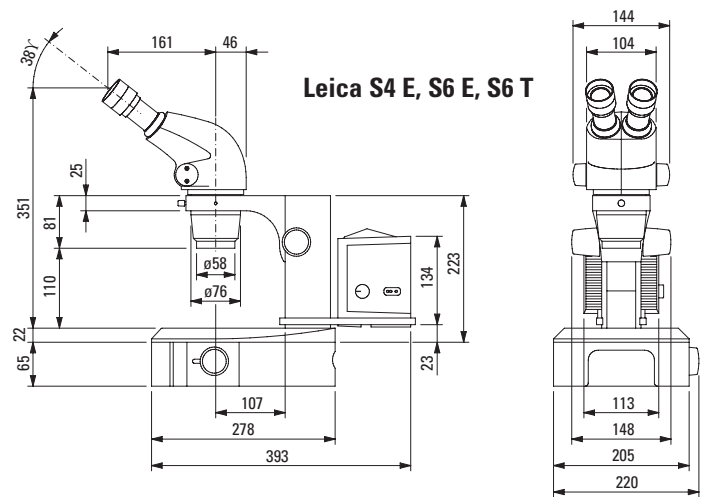


Dimensions Leica S4 E, S6 E, S6 T

with incident-light stand

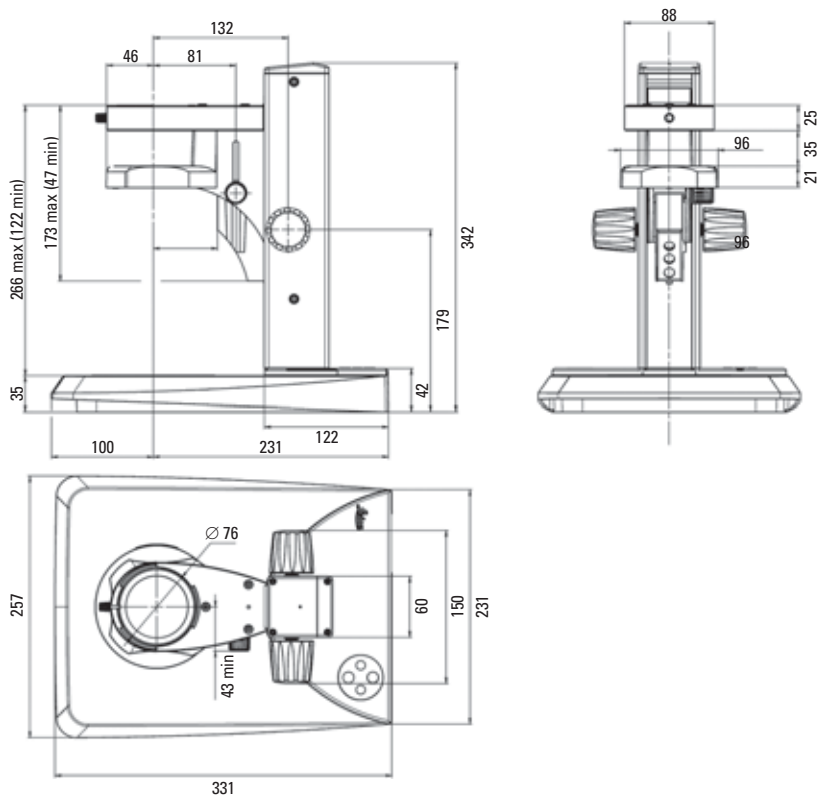


with transmitted-light stand



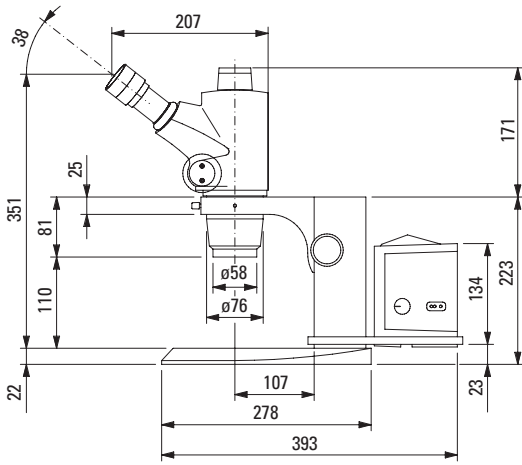
Dimensions in mm

Dimensions LED 2000 / 2500

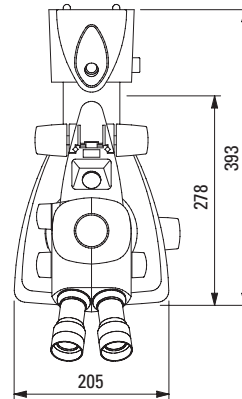
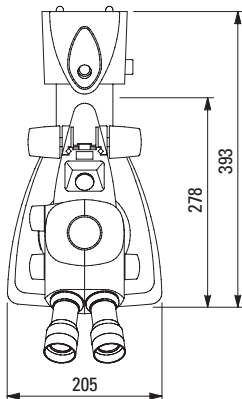
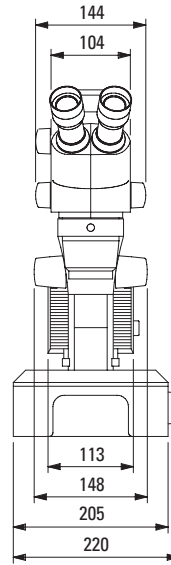
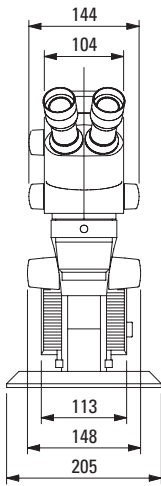
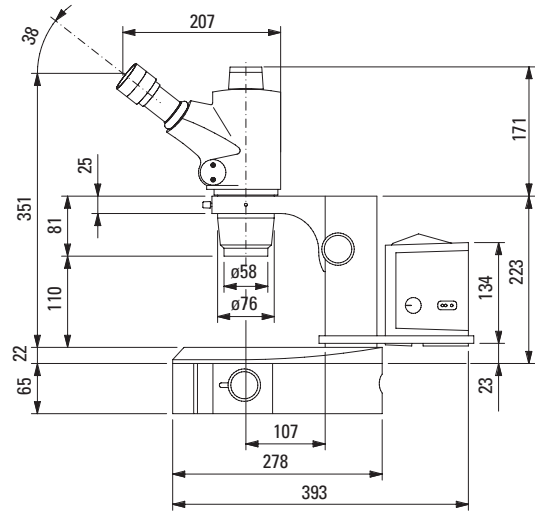


Dimensions Leica S6 D

with incident-light stand



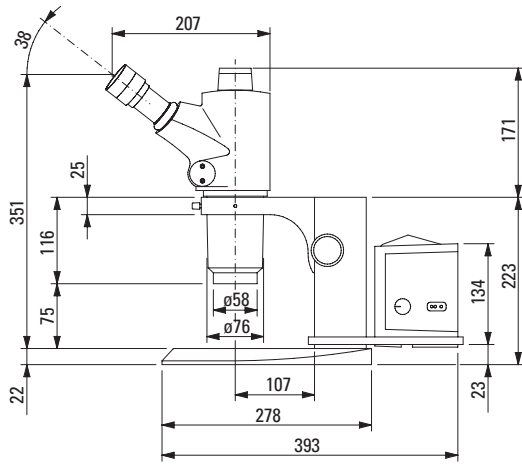
with transmitted-light stand



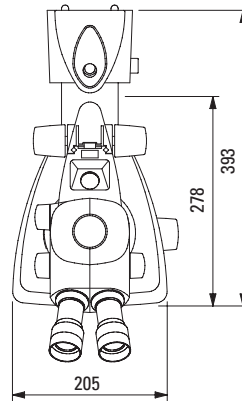
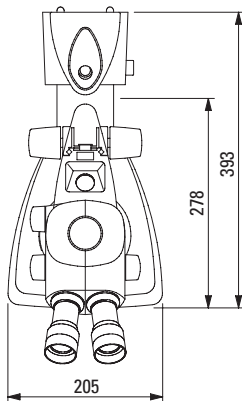
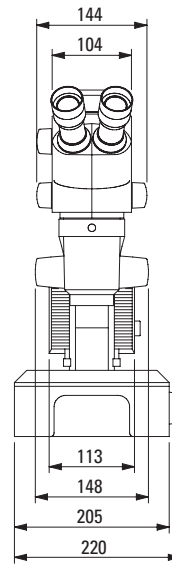
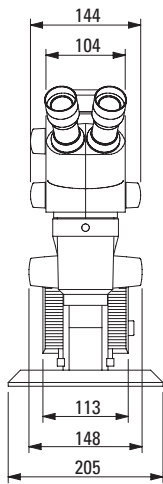
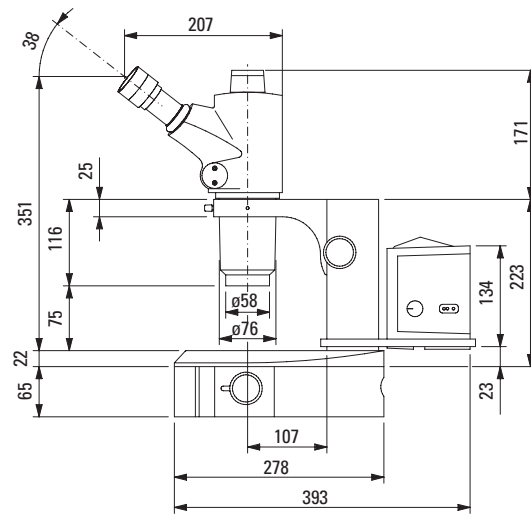
Dimensions in mm

Dimensions Leica S8 APO

with incident-light stand



with transmitted-light stand



Dimensions in mm

Informative literature

All brochures in German, English, French, Spanish, Italian.

Please also visit our homepage: www.leica-microsystems.com

There you will find the latest information and updates as well as numerous examples of practical application for our stereomicroscopes in industry and life science. You can also view, print and save any brochures and the latest manuals.

Leica StereoZoom® Greenough stereomicroscopes	M1-188-0
Leica S8 APO StereoZoom®, technology	M1-188-2
Leica S8 APO StereoZoom®, natural science	M1-188-3
Leica L2 cold-light source	M1-288-0
Swingarm stands	M1-217-1

Digital cameras & image-processing/analysis software

Leica DFC295 FireWire color camera system	10IDC13010
Leica DFC425/425C FireWire color camera systems	10IDC15010
Leica DC160 digital camera system	10IDC10010
Leica LAS Software information box	10IDI12010
Leica IC80 HD Integrated high-definition stereomicroscope camera	10IDC14010
Leica F12 I Floor stand	10IDA13010

“With the user, for the user”

Leica Microsystems

Leica Microsystems operates globally in four divisions, where we rank with the market leaders.

• Life Science Division

The Leica Microsystems Life Science Division supports the imaging needs of the scientific community with advanced innovation and technical expertise for the visualization, measurement, and analysis of microstructures. Our strong focus on understanding scientific applications puts Leica Microsystems' customers at the leading edge of science.

• Industry Division

The Leica Microsystems Industry Division's focus is to support customers' pursuit of the highest quality end result. Leica Microsystems provide the best and most innovative imaging systems to see, measure, and analyze the microstructures in routine and research industrial applications, materials science, quality control, forensic science investigation, and educational applications.

• Biosystems Division

The Leica Microsystems Biosystems Division brings histopathology labs and researchers the highest-quality, most comprehensive product range. From patient to pathologist, the range includes the ideal product for each histology step and high-productivity workflow solutions for the entire lab. With complete histology systems featuring innovative automation and Novocastra™ reagents, Leica Microsystems creates better patient care through rapid turnaround, diagnostic confidence, and close customer collaboration.

• Surgical Division

The Leica Microsystems Surgical Division's focus is to partner with and support surgeons and their care of patients with the highest-quality, most innovative surgical microscope technology today and into the future.

The statement by Ernst Leitz in 1907, “with the user, for the user,” describes the fruitful collaboration with end users and driving force of innovation at Leica Microsystems. We have developed five brand values to live up to this tradition: Pioneering, High-end Quality, Team Spirit, Dedication to Science, and Continuous Improvement. For us, living up to these values means: **Living up to Life.**

In accordance with the ISO 9001 certificate, Leica Microsystems (Switzerland) Ltd, Industry Division, has at its disposal a management system that meets the requirements of the international standard for quality management. In addition, production meets the requirements of the international standard ISO 14001 for environmental management.

www.leica-microsystems.com

ryf ag



Ryf AG
Bettlachstrasse 2
2540 Grenchen
tel 032 654 21 00
fax 032 654 21 09
www.ryfag.ch

Leica
MICROSYSTEMS