



Leica StereoZoom®

Greenough Stereomicroscopes
for Original Equipment Manufacturers

ryf ag



Ryf AG
Bettlachstrasse 2
2540 Grenchen
tel 032 654 21 00
fax 032 654 21 09

www.ryfag.ch

Leica

Perfect tool for your high-quality production lines

The success of your company as an original equipment manufacturer hinges on profitable and competitive production or test systems. An important component in these systems are stereomicroscopes that help ensure reliable results in assembly, processing and testing. This calls for compact, high-performance stereomicroscopes that can be integrated in your machines unobtrusively without any hassle. The microscopes must also offer optimum image quality, high observation comfort and simple operation and must function reliably, smoothly and accurately over a long period.

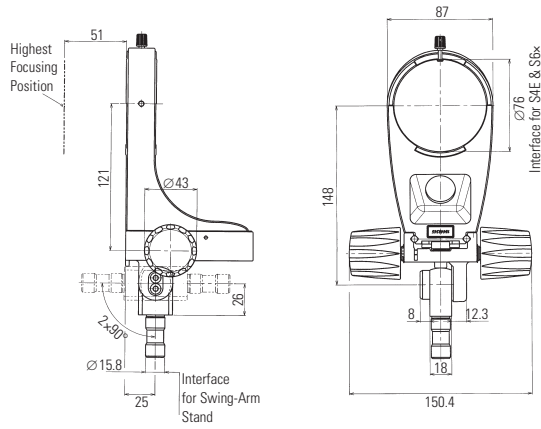
With its new StereoZoom® line* of Greenough stereomicroscopes built to the highest specifications, Leica Microsystems also offers exemplary services: Expert advice, individualized problem solutions at fair prices, first-class customer service, high-speed delivery and prompt technical service go without saying.

Link into the future: www.stereozoom.com

*StereoZoom® is a trademark registered in the
Principal Register of the US Patent and Trademark Office.

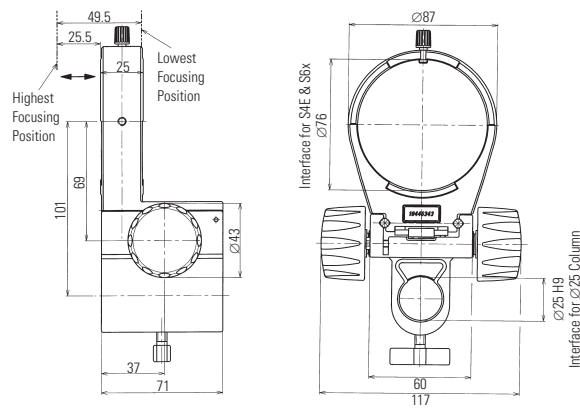
Dimensions
in mm

Stock no.
10 446 345
Mountable focus arm



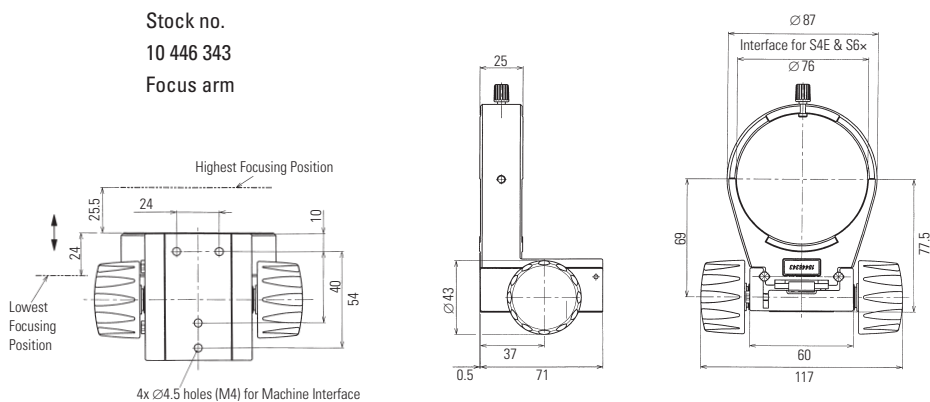
Mountable focus arm, inclinable, with standardized mounting pin \varnothing 15.8mm (5/8"), terminator

Stock no.
10 446 344
Focus arm for 25mm post



Focus arm with \varnothing 25mm upright

Stock no.
10 446 343
Focus arm



Focus arm

Leica L2 compact cold-light source

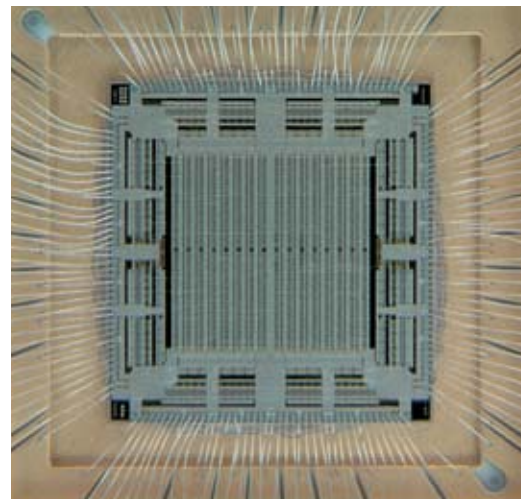
The new Leica L2 antistatic cold-light source is the powerful illuminator for use with the StereoZoom® line. Apart from the classic oblique illumination with one- or two-arm light guides, suitable accessories are also available for the coaxial, incident light and transmitted light illumination techniques. The Leica L2 is not only the smallest (125mm×110mm×150mm) and lightest (0.5kg) cold-light source, it is also the only one that can be coupled directly to the stereomicroscope stand and to Ø 25mm–38mm uprights, or used as standalone illumination.

Leica StereoZoom® – clear benefits for your partners

- Simple, space-saving adaptation to bonders, probers, machines and systems, inclinable and rotatable laterally through 360°
- Excellent price/performance ratio
- Choice of 4.8:1 and 6.3:1 zoom, adjustable zoom stops for repetitive tasks
- Very large field of view diameter of 36.5mm and working distance of 110mm
- Clear, sharp, distortion-free, flat, high-contrast images and optimum chromatic correction
- Simple operation, fatigue-free viewing and working
- Versions with 38° and 60° viewing angles, eyepieces for spectacle wearers
- Ergo objectives for variable viewing height, magnification and working distance
- All models antistatic, plus Terminator version
- High-performance, compact, antistatic Leica L2 cold-light source
- Permanently reliable, smooth-running and precise



Leica S6E with transmitted light stand and Leica L2 cold-light source



Solutions for all requirements

With the new StereoZoom® line you can select exactly the performance you need: Even the Leica S4E basic model with 4.8:1 zoom for routine checks offers access to the entire range of objectives, eyepieces, stands and illumination systems. The three antistatic Leica S6-models with 6.3:1 zoom are available optionally with 38° or 60° viewing angle and as a terminator version for working areas that are susceptible to ESD.

Straightforward installation, ready for use immediately

A number of different focusing arms make it possible to adapt any model in the new StereoZoom® line to bonders, probers or other systems quickly and easily without any adjustment. The new, slimline StereoZoom® models can also be built into your systems and work fixtures using your own individual adapters. Ideal for use in the inclined position: the Leica S6 with ergonomic 60° viewing angle.

Visibly more benefits for the customer

Use in the OEM sector requires large fields of vision and working distances for handling tools and circuit boards. The standard equipment versions of the Leica S4E and the three Leica S6 models offer a large working distance of 110mm, and at 36.5mm the largest field of vision diameter in their product class to ensure faster and more effective inspection.



Leica S6 with focus arm, inclinable, mounting pin Ø 15.8mm (5/8") and goose neck light guide



Leica S6 with focus arm, inclinable, mounting pin Ø 15.8mm (5/8") and Leica L2 cold-light source with universal light guide

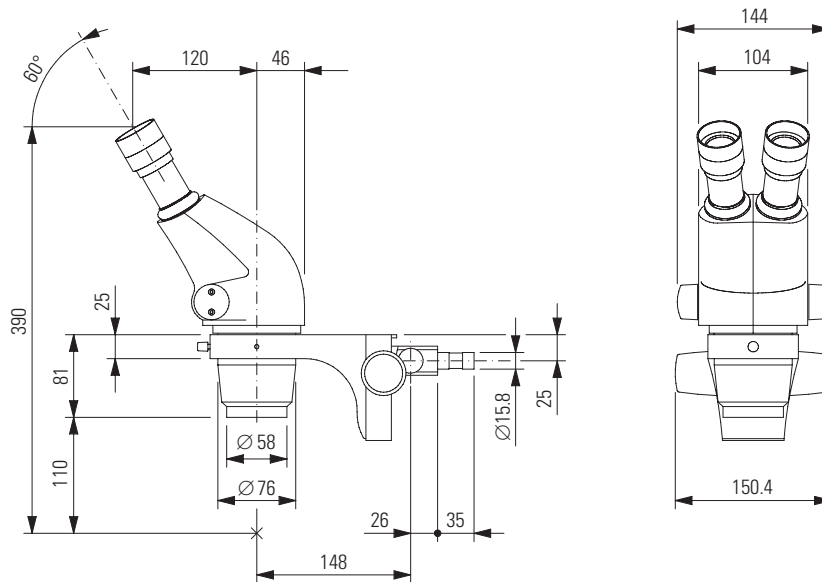
Leica Design by Christophe Apothéloz

Leica StereoZoom® overview

Front objective	Working distance mm	Leica S4E Eyepiece 10×/23		Leica S6E, S6, S6T Eyepiece 10×/23	
		Magnification	Field of view diameter mm	Magnification	Field of view diameter mm
	110	6.3×–30.0×	36.5–7.7	6.3×–40.0×	36.5–5.8
0.32×	300	2.0×–9.6×	114.1–23.9	2.0×–12.8×	114.1–18.0
0.5×	200	3.2×–15.0×	73.0–15.3	3.2×–20.0×	73.0–11.5
0.63×	155	4.0×–18.9×	57.9–12.2	4.0×–25.2×	57.9–9.1
0.75×	130	4.7×–22.5×	48.7–10.2	4.7×–30.0×	48.7–7.7
0.56×–0.75×	77–137	3.5×–22.5×	65.2–10.2	3.5×–30.0×	65.2–7.7
0.28–0.4×	200–350	1.8×–12.0×	130.4–19.2	1.8×–16.0×	130.4–14.4

Detailed information about the new StereoZoom® line and the new Leica L2 cold-light source can be found in brochures M1-188-0en and M1-288-0en. For order numbers and technical data, please refer to M1-188-4en.

Dimensions of Leica S6 with mountable focus arm



The Business Units in Leica Microsystems hold the management system certificates for the international standards ISO 9001 and ISO 14001 relating to quality management, quality assurance and environmental management.