



Insights into the company





Contents

| | |
|---------------------------|---------|
| Welcome | 3 |
| Milestones | 4 – 5 |
| Showroom | 6 – 7 |
| Service & Repair | 8 – 9 |
| Calibration & Training | 10 – 11 |
| Industrial Applications | 12 – 17 |
| Bioscience & Dental | 18 – 19 |
| Education | 20 – 21 |
| Engineering | 22 – 23 |
| Production – Ryf Prototec | 24 – 25 |
| Ecology | 26 – 27 |
| Team | 28 – 29 |
| Locations | 30 – 31 |



Welcome to the world of microscopy and measurement technology...

... and welcome to the world of Ryf AG. Our wholehearted commitment to microscopy dates back to 1965; ever since then, our family firm has grown continuously, and has now developed into the market leader in the microscopy and optical measurement systems sectors.

«The best solution for you» – this is the watchword that guides our thinking and our actions, encouraging us to adopt an independent and solution-oriented approach and (most important of all) to take the long-term view. About forty professionals (both front of house and behind the scenes) respond to the wishes and ideas of our client base, which mainly comprises industrial and research firms as well as companies in the biological, medical and educational sectors.

We are also your professional partner for special solutions and complex customer-specific needs; we meet these requirements by developing our own products or as representative agents for renowned brands, enabling us to offer a fully comprehensive range. Our ten service technicians have access to an inventory of 20,000 articles, and they will also make sure that you receive the best possible support in every respect after you have made your purchase.

We look forward to taking up your challenges!

Daniel Ryf
Proprietor/Director/CEO

MILESTONES OVER THE PAST 60 YEARS!



The traditional «Löwen-Haus or Lion House» in the center of the town of Grenchen is today the headquarters of Ryf AG. The property has a long and important history (from the 17th century, including a stagecoach station, cantonal customs office, bank headquarters, inn, hotel) was acquired in 2003 and then completely rebuilt with great attention to detail and converted into an attractive commercial building.

1965

Bernhard Ryf founds the company, which trades in microscopes and optical instruments as well as operating a photography shop.

1972

First developments of our own in the illuminator segment.

1975

Hans Ryf becomes General Manager and takes over the company five years later.

1994

The firm is converted into a joint stock company (AG).

1999

Daniel Ryf, later to become CEO and proprietor, joins his parents' company.

2001

Ryf AG wins the Solothurn «Company of the Year» prize.

2003

The firm acquires the historic «Löwen-Haus» in the city center, and carries out a complete refurbishment of the building.

2005

marks the 40th anniversary of the Swiss market leader in optical measurement, monitoring and testing systems.

2006

Our branch in the French-speaking region of Switzerland opens at Commugny in the Canton of Vaud.

2007

Ryf AG becomes the sole Swiss distribution and service partner of Nikon AG for the industrial sector. An ERP system from SAP is introduced to manage some 20,000 articles.

2009

Expansion of the range of maintenance and repairs, with 10 technicians the largest after-sales service provider in Europe in microscopy.

2014

Opening of the sales office in the canton of Zurich.

2015

50th anniversary of Ryf Ltd.

2016

Certification ISO 9001-2015 by SQS (IQNet Certified).

2018

Purchase of the new «MASS16» building in Grenchen for the expansion of the warehouse and the mechanical workshop/assembly hall.

2019

Recertification according to ISO 9001-2015 SQS (IQNet Certified).

2021

Establishment of the Ryf AG Zurich branch (with demo room) in Egg near Uster.

2023

Environmental certification: ISO 14001 (SQS).

Own CNC production with the newly founded subsidiary RYF PROTOTEC AG. In total, more than 10 modern CNC production centers (3–5 axes) as well as various CNC lathes are in operation (ISO 9001/14001).

2024

Nomination for the Family Business Award by AMAG and NZZ.

General agency for the brand CHOTEST (digital CNC measuring projectors).

2025

60th anniversary of Ryf AG.

General agency for Taylor-Hobson-Ametek (surface and roundness measuring instruments).

2026

Preparation and certification for MedTech with ISO 13485.

SHOWROOM

FOR US MICROSCOPY MEANS: ADVICE DOWN
TO THE SMALLEST DETAIL.

Unique in Switzerland: in our extensive showroom at our headquarters in Grenchen, we present over 100 instruments and systems from a variety of manufacturers – all in actual operation. This allows you to get an (independent of brand!) comprehensive overview at your leisure and compare the microscopes, testing and measuring systems, as well as surface and roundness measuring instruments yourself. We are also excellently equipped and prepared for experimental and test series.

Ryf's consulting team is on hand to offer you advice and practical support!



The sales team of Ryf AG

- Microscopes for industry, research and development
- Microscopes for biology, medicine and dental
- Microscopes for education and training
- Illuminators (fiber optic/LED/glass fiber /fluorescent)
- Optical measurement systems
- Camera systems
- CNC measuring machines
- Software
- Customer-specific test and measurement systems
- Surface measuring instruments
- Form and position measuring instruments
- Optical 3D profilometers



Demonstration room Commugny / VD Demonstration room Egg-Uster / ZH

We have also set up a demo room in our branch at Commugny in the French-speaking region of Switzerland, showcasing the main instruments and systems (since 2007).

Ryf AG Zurich branch: in 8132 Egg near Uster with a small demo room and office/workshop (since 2021).

Ryf's tip

To ensure that our team of advisors can devote plenty of time to you, please notify us in advance by calling us at Grenchen or Commugny.

We're looking forward to your visit!

SERVICE & REPAIR

SERVICE EXCELLENCE REQUIRES SOMETHING THAT CANNOT BE MEASURED WITH MONEY: HONESTY AND INTEGRITY.



We go the extra mile: Ryf AG's service and repair department is renowned for arriving rapidly on the scene whenever it is needed. Ten excellently trained service technicians travel the length and breadth of Switzerland every day in their well-equipped vehicles. Our spare parts warehouse, featuring SAP management, comprises over 20,000 items and helps to keep response times very short if a fault occurs.



Ryf AG offers a modern workshop for adaptations, conversions, special production runs and inspections that cannot be carried out on site at the customer's premises.

Customers can count on maximum flexibility and reliability thanks to our investment in our SAP-controlled inventory of equipment and spare parts, comprising over 20,000 items. And with our subsidiary RYF PROTOTEC AG, we have a high-performance CNC production facility (CAD-CAM).





Our practical maintenance agreement with transparent and fair conditions sets the standard for the sector.

A selection of our services

- Calibration to the ISO standard*
- QA/QM reports to the ISO standard*
- Complete cleaning
- Function checks
- Tuition and training
- Installation of software and hardware
- Repairs and adaptations
- Optimized ergonomics
- Fault service
- Replacement equipment

(*Also see page 10)



Nikon Nexiv VMZ



Not least due to its strong service expertise, leading manufacturers such as Nikon, Chotest, and Taylor Hobson choose Ryf AG as their sales and service partner for Switzerland.



Ryf's tip

As in so many other sectors, there are what claim to be «special offers» in microscopy too. However, Ryf AG is your one-stop shop for the entire package, including unbiased advice, quality equipment and professional support that continues after your purchase. And as you will see, our approach pays dividends for you!

CALIBRATION & TRAINING

SERVICE DEFINED BY RYF: BE THE REASON SOMEONE SMILES TODAY.

Of course, there is more than a grain of truth in the casual definition of quality: «quality is when the customer comes back, not the goods.» The reliability of measurement and test equipment directly impacts product quality. This means that regular calibration of instruments and systems in compliance with the current standards is indispensable for companies that are aware of their responsibilities – no matter whether or not they have a quality management system in place.

High levels of expertise and experience are essential in order to calibrate instruments. The employees of Ryf AG are welcome calibration specialists for various brands and products throughout Switzerland.

A selection of our services

- Calibration with test and measurement records as per commonly applied standard ISO 9001:2015
- The maintenance agreement simplifies the processes, and guarantees compliance with due dates
- Tuition, training and refresher courses (e.g. for new staff)
- Express repair service and replacement instruments
- Experience of virtually all sectors and production processes, including clean room conditions





The service team of Ryf AG



Ryf's tip

Our maintenance agreement offers you an elegant and convenient solution that guarantees highly reliable production and optimal cost efficiency. Your instruments are regularly serviced, cleaned, calibrated and (if you so wish) issued with inspection records by our experts on your premises, at the intervals you choose. Take advantage of this practical service – you'll find it pays off for you!

INDUSTRIAL APPLICATIONS

QUALITY IS NOT AN ACT.
IT IS A HABIT.

Product inspection and monitoring is a key aspect in the micro and macro ranges. You're sure to find that we have the right inspection equipment for optical checks, quality assessments and documentation. Ryf AG has been serving the sector for decades, and we have accumulated many years of experience with a vast range of starting materials.

These systems can be fitted with imaging documentation equipment (cameras), and we give high priority to optimized user ergonomics at the workstation.

A selection from our product range

- Workstation microscopes, designed for optimal ergonomics
- Video system workstations for the macro and micro ranges
- High-power stereoscopic microscopes with high-resolution camera systems
- Software solutions, image processing, overlay measurement, image database, Kalotest, image analysis, focus depth program
- Special solutions to meet customers' requirements
- Dual discussion microscopes
- Microscope systems for materials science (metallographic microscope systems)
- Surface and roundness measuring instruments



Ryf RMM29



Chotest RVX1060



Ryeco 4000





Taylor Hobson PGI Talysurf (surface measuring instrument)



Taylor Hobson Talyrond 585 PRO (roundness measuring instrument)



Ryeco DSK-800



R-FHD-1080
Mini Full HD
Camera System: RYF AG

Ryf accessories (Swiss Made)

- Various specimen/slide holders
- Rotary inspection equipment
- Ryf universal stand system (RUS)
- Sturdy Ryf aluminum stages for complete systems, standard or customized
- Lighting systems
- Graticules for eyepieces with precision scale divisions
- Ryf dust protection covers

Ryf's tip

Professional training and instruction on all systems are a matter of course at Ryf AG. Tests and technical investigations can be carried out in our own workshop. Our technicians welcome the challenge of modifying or adapting components to meet our customers' requirements!

INDUSTRIAL APPLICATIONS

QUALITY IS THE INVESTMENT
WITH THE BEST RETURN.

Switzerland is a byword for precision – and in this regard, Ryf AG is one of the front-runners with a host of measurement technology solutions. Our expertise ranges from simple manual industrial measuring microscopes to highly complex, fully automated 3D measurement systems tailored to our customers' requirements.

Professionals with twenty or more years of experience, first-class components and our «one-stop shop» philosophy – these are your guarantees of the best possible return on your investment in this area too.

A selection from our product range

- Stereoscopic microscopes with (specific) illuminators
- Stereoscopic microscopes with camera systems, measurement software, hardware (HP workstation)
- Large-field illuminated magnifiers
- MANTIS Vision, stereoscopic microscopes without eyepieces, with optimized ergonomics
- Microscopes with camera systems for materials science
- Software solutions, image processing, overlay measurement, image database, Kalotest, image analysis, focus depth program
- Special solutions to meet customers' requirements



Nikon SMZ800N Trino



RUS-2 / Nikon SMZ745

Inspectis



Nikon LV150





Nikon-Ryeco SuperErgo



Nikon L200N



Nikon SMZ745 & 3D-Headset



ASH



Ryecocam2000 & Nikon SMZ745T

Ryf Accessories (Swiss Made)

- Vast range of illuminators for stereoscopic microscopes
- Micro and macro workstations
- HF circular/linear fluorescent illuminators
- LED circular illuminators
- Light sources for glass fiber illuminators
- Ringlight illuminators and standard fiber optics (light guides)
- Customized fiber optics (light guides)

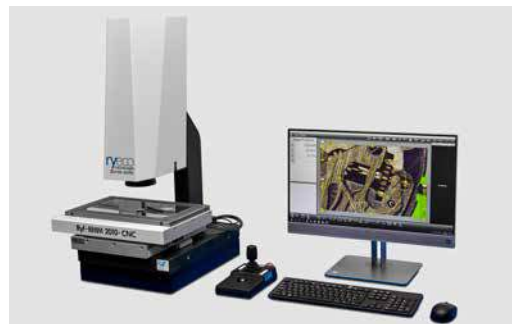
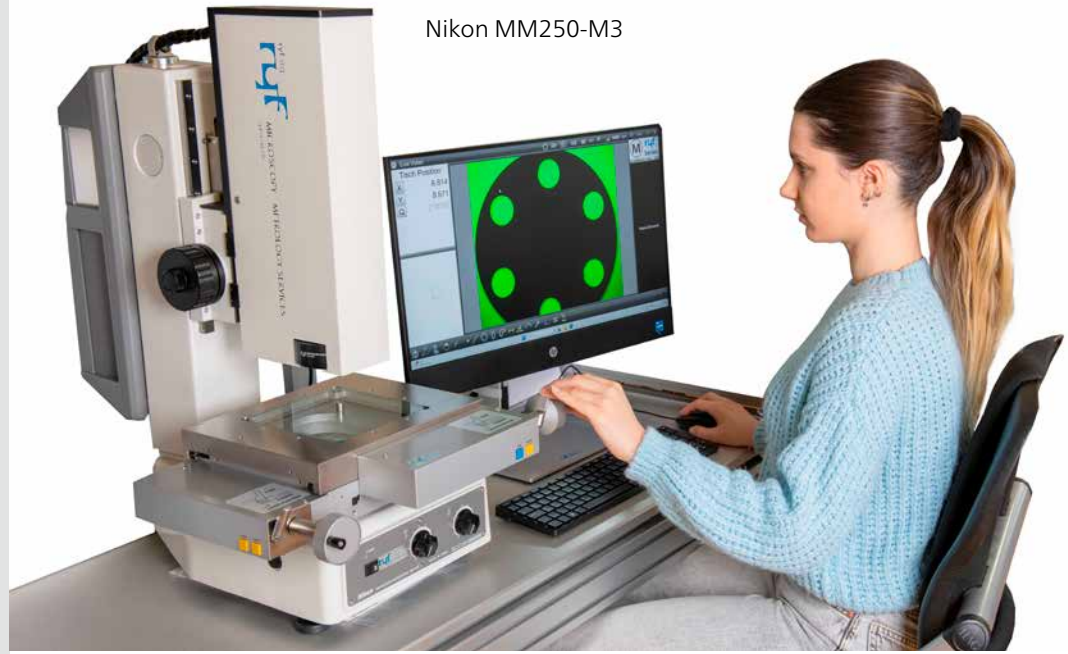
Ryf's tip

One test says more than a thousand words: our demo room, with a variety of systems installed and ready to operate, is always at your disposal for test measurements (but please notify us in advance). When it comes to metrology too, the Ryf team will be glad to offer you advice and practical assistance.

INDUSTRIAL APPLICATIONS

QUALITY IS THE INVESTMENT WITH THE BEST RETURN.

Nikon MM250-M3



Ryeco RMM 2010 CNC



Nikon Nexiv VMZ



Chotest RVX8300

New: Digital CNC measuring projectors

Ryf-CHOTEST Optical inspection has never been so easy. High-precision part measurement at the touch of a button and with a measuring accuracy of $\pm 0.1 \mu\text{m}$.



Switzerland is a byword for precision – and in this regard, Ryf AG is one of the front-runners with a host of measurement technology solutions. Our expertise ranges from simple manual industrial measuring microscopes to highly complex, fully automated 3D measurement systems tailored to our customers' requirements.

Professionals with twenty or more years of experience, first-class components and our «one-stop shop» philosophy – these are your guarantees of the best possible return on your investment in this area too.

A selection from our product range

- Industrial measuring microscopes and profile projectors. A selection of measuring stages from 50 × 50 mm to 300 × 500 mm
- Metrology with DXF comparison: profile and measuring projectors (video measuring systems) for DXF comparison measurements
- Materials science measuring microscopes for magnifications up to 2000x
- High-precision multi-sensor CNC video measuring systems, Nikon Nexiv and Chotest Novator, with table travel ranges from 150 × 150 mm to 1200 × 720 mm
- Shaft measuring devices WMM-65 and WMM-600 with SAPHIR measuring software from Dr. Schneider
- Measuring systems for cutting tools such as milling cutters
- Surface and roundness measuring instrument

Toollense 750



RMM-29



Ryf's tip

One test says more than a thousand words: our demo room, with a variety of systems installed and ready to operate, is always at your disposal for test measurements (but please notify us in advance). When it comes to metrology too, the Ryf team will be glad to offer you advice and practical assistance.

Ryf Accessories (Swiss Made)

- Ryf LED ring lights (SWISS MADE), light sources for fiber-optic illumination and custom-made light guides
- Various object holding devices
- Runout inspection devices
- Ryf solid aluminum worktables for complete systems, standard and custom-made
- Ryf dust protection cover
- Miniaturized precision vises
- Universal stands and drives

BIOSCIENCE & DENTAL

FOR US MICROSCOPY MEANS: ADVICE DOWN TO
THE SMALLEST DETAIL.

There are many good reasons why numerous research institutes, development laboratories and hospitals all over Switzerland rely time and again on solutions from Ryf AG. Drawing on our considerable experience, we make every effort to ensure that you get the perfect solution to match your specific needs. And we believe that giving professional advice is more important than making a sale.

We interpret «after-sales service» quite literally – so our extensive service organization is always available to offer training, support and maintenance.

A selection from our product range

- Routine microscopes for brightfield microscopy
- Routine microscopes with microscopy methods: phase contrast, darkfield, DIC (Differential Interference Contrast), polarization, and fluorescence
- Microscopes with camera systems and corresponding software
- Microscopes for leisure applications (mycology, biology)
- Dental microscopes for dental treatment (in combination with built-in FHD cameras and Wi-Fi functionality)



Ryeco AM-5000



Leica DM1000



Nikon Eclipse

Ryf's tip

Take advantage of our brand-neutral advice. And if you want to be sure of the very best workplace ergonomics, we shall be glad to place test instruments at your disposal so that you can trial them in your own specific working environment.

EDUCATION

SERVICE EXCELLENCE REQUIRES SOMETHING THAT CANNOT BE MEASURED WITH MONEY: HONESTY AND INTEGRITY.

It's no simple matter to select a microscope system for your school or college – after all, this is an investment in the future that should pay off for many years to come! Reaching the right compromise between the available budget and the ideal product in terms of technology and quality is a difficult decision – and one which will impact the students as well.

Ryf AG can draw on many years of experience to assist you

- We can advise you over the telephone
- We can supply a test instrument
- We offer demonstrations of different microscopes, accessories, cameras (selection system) at your own location
- You are welcome to visit our demo room so you can compare all the systems (including camera systems)
- Service: our specialists will calculate the servicing costs for your existing inventory of microscopes

A selection from our product range

- Stereoscopic microscopes with built-in or built-on Ryf-illuminators for reflected and transmitted light illumination
- Modern biology microscopes (with LED illuminators), specially developed for high schools
- Largest selection of stereoscopic microscopes for high schools/colleges and universities
- Cutting-edge biology microscopy systems for high schools/colleges and universities
- Various special microscopes for universities of applied sciences specializing in technology
- Complete training equipment in the macro and micro ranges for technical instruction (e.g. for training watchmakers)
- Teachers' microscopes with integrated full HD camera system for projector and LED flatscreen projection



Leica Education





Leica DM 500/750



Ryf's tip

We can offer you attractive volume pricing for class sets. As you would expect, the equipment is inspected and delivered to you ready to operate, or we can install it directly on site. At your request, we can also provide comprehensive user training. Even for these simpler devices, we remain at your disposal after the purchase.

ENGINEERING

IT IS OFTEN THE LITTLE THINGS THAT MAKE IT POSSIBLE TO REALISE GREAT THINGS.

If we take a brief look back at our company's history, it's clear that the Ryfs were always to some extent the Gyro Gearlooses of the sector. What was not available on the market (or was only available in insufficient quality) was often quickly further developed and produced in-house.

We are pleased to offer you the expertise we have built up in the world of microscopy and optical measurement systems, and to place our extensive network of long-standing product partners at your disposal.

A selection from our product range

- Design and individual production of holders for test specimens
- Customized solutions and in-house developments where no standard solution is possible in the field of microscopy
- Project processing in close collaboration with customers
- Complex systems from one single source
- Own mechanical testing workshop and CNC production
- Inhouse testing and comparison facilities at Ryf
- Professional global brands as our partners

Customised solutions
Nikon SMZ800 / wafer inspection



Customised solutions with Nikon materials microscope



Customised solutions with X-Y stage and materials microscope



Customised solutions with Ryeco Zoom



Customised solutions with M3



Engineering is in our blood:
Ryf AG's innovative achievements
have been honored in 2001 with the
Solothurn «Company of the Year»
prize.



Family Business Award finalist 2024



Finalistin
2024

Ryf's tip

It pays dividends to discuss your ideas and visions with us at an early stage of your project. In recent years, the Ryf team has implemented numerous special solutions and developments of its own for a wide variety of sectors. – Teamwork and professionalism are our watchwords here.

PRODUCTION

WITH THE RYF PROTOTECH SA PRODUCTION UNIT,
WE HAVE BECOME EVEN MORE FLEXIBLE FOR YOU.

Prototypes, small and medium series, assemblies ...

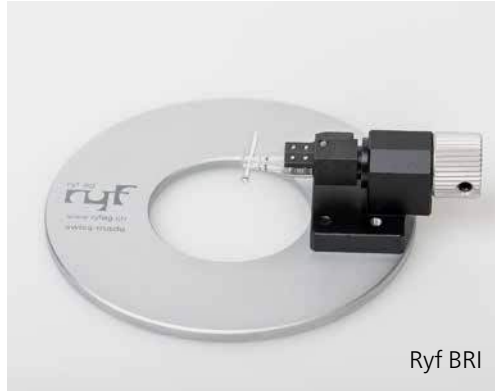
The know-how and infrastructure of RYF PROTOTECH AG, the production unit of Ryf AG, are tailored to the product-specific manufacturing of small parts, fixtures, and customised products for our parent company, Ryf AG.

Located in the «Mecca of small parts production», here in Grenchen we are also in the position to produce prototypes, small series and assemblies for customers from a wide range of industries. Important customers include the automotive industry, the electronics sector, mechanical engineering, and of course renowned companies from the watchmaking industry.





Ryf RUS-2



Ryf BRI



Ryf RK-16b



Ryf BRF



Ryf RSZ15

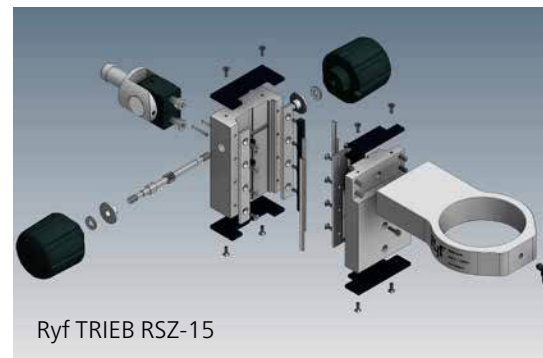


Ryf RKT-1

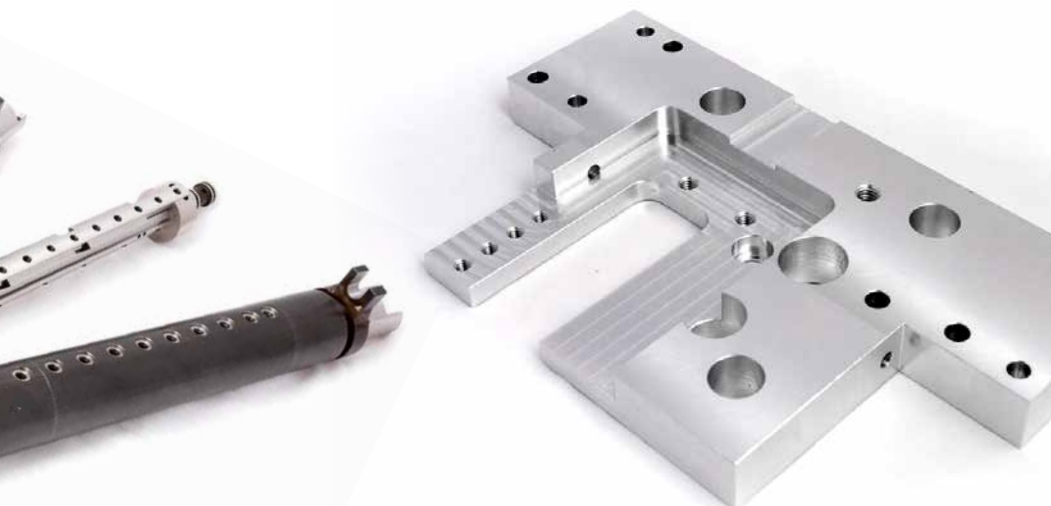
Modern machinery and CAD/CAM workstations

Various CNC milling centers with three to five axes, CNC drilling and milling machines, CNC lathes with sub-spindle and driven tools form the basis for the efficient and highly precise production of prototypes, complex small parts, and ready-to-install assemblies. To this end, our parent company Ryf AG provides a range of the latest measurement systems and test equipment, which allow for exceptional quality control and quality assurance of the manufactured parts.

Our customers determine the degree of finish of the manufactured small parts: Hardening, surface and cylindrical grinding, as well as coating of the high-precision CNC small parts is part of the standard repertoire of RYF PROTOTEC AG.



Ryf TRIEB RSZ-15



Ryf's tip

Customizing «Made in Switzerland». With our production unit Ryf Prototec AG, we can offer you in the field of sophisticated CNC manufacturing with CAD-CAM with our 2- to 5-axis milling- and turning- centers / lathes.

ECOLOGY

SO THAT ALSO THE NEXT GENERATION
HAVE A FUTURE WORTH LIVING.

At Ryf Ltd., technological progress goes hand in hand with concern for people and the environment. It is often small steps that make a big difference here. ISO certification in accordance with the 14001 standards is intended to document that our awareness of the sustainable development of the company is sharpened.

ISO 14001 provides us with the «management framework» to reduce our environmental impact in a targeted manner. One example of these efforts is our vehicle fleet, which has now been supplemented with e-cars. The electricity for the vehicles comes from the photovoltaic system on the roof at the production site in Grenchen. On long journeys, the rest of the vehicle fleet uses the latest generation of economical diesel vehicles of the latest generation.

At our production facility, the subsidiary Ryf Prototec AG, the processes and procedures are defined according to ecological principles. Among other things, we attach great importance to optimizing the flow of materials and the environmentally friendly treatment and disposal of the oils, chips and emulsions generated during production.





Electric vehicles of Ryf AG



Ryf's tip

If you are the environmentally conscious trading, service and production partner then we have from Ryf Ltd. and its subsidiary Ryf Prototec AG have a lot to offer you. We are sensibilized to ecological issues and think long-term in every respect.

TEAM

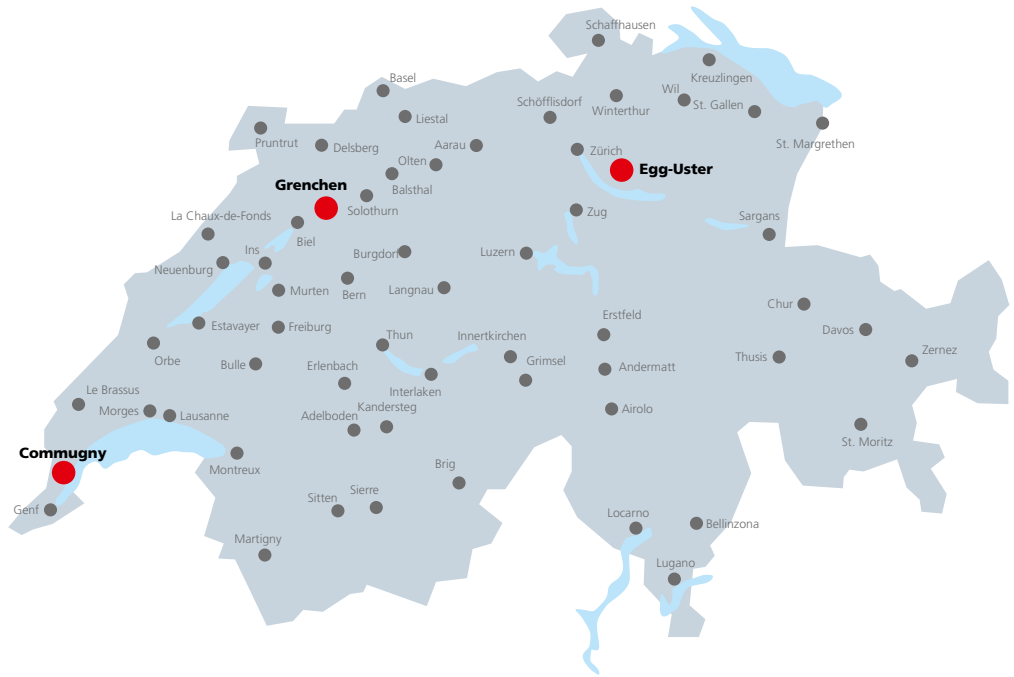
PEOPLE-FOCUSED SPIRIT...





Companies don't become market leaders through fine words and costly advertising campaigns – what counts is the quality of our day-to-day work. Ryf AG is proud of its employees – some of them can look back on twenty or more years with our firm – and whatever their position in the company, all of them make every effort to ensure that our customers are satisfied.





Close to you

Our headquarters in Grenchen has an excellent strategic location in an area that is actually a conglomeration of micro-industries and businesses in the watch and clock sector, and medical technology. Numerous production firms and suppliers have chosen locations in the wider region around Grenchen, and the business centers of Zurich, Basel and Bern can be reached quickly thanks to excellent motorway connections.

With the branch in Commugny near Geneva, we have created a central base for the regions of Lausanne, Geneva, Fribourg, and Sion, serving Western Switzerland and Lower Valais. Here too, customers have access to a well-equipped and modern showroom for tests, demonstrations, and service (by appointment).

Ryf AG with branch in Egg near Uster / ZH

In Egg near Uster / ZH, Ryf AG operates its branch for the greater Zurich area and Eastern Switzerland, featuring a sales office and showroom.

Our production facility: Ryf Prototec AG, Grenchen

The production unit, with 1000 m² of production space, offers a powerful CNC machinery park, CAD/CAM workstations, and experienced production specialists for internal manufacturing needs as well as demanding CNC assignments from external customers.

STANDORTE
WE TAKE CUSTOMER PROXIMITY
LITERALLY.



Head office Grenchen



Assembly workshop Grenchen / warehouse



Branch office Commugny Vaud / Geneva



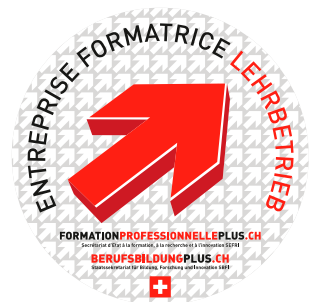
Branch in Egg near Uster / ZH



Production: Ryf Prototec SA, Granges /
CNC manufacturing and CAD/CAM workstations



Service expertise throughout Switzerland



« We are constantly investing in the skills of our employees with the aim of presenting the best customer solutions. This includes investments in the technical infrastructure, R&D and, above all, in comprehensive customer support and after sales Service. This process of continuous improvement and process optimization runs like a continuous thread through the history of Ryf Ltd. »

Daniel Ryf
CEO / owner in the second generation



MICROSCOPY + METROLOGY SERVICES
Spisse made

Ryf AG

Bettlachstrasse 2
CH-2540 Grenchen
T +41 32 654 21 00
ryfag@ryfag.ch
www.ryfag.ch
Shop: shop.ryfag.ch

Ryf SA

Succursale VD/GE
Route de Genève 9c
CH-1291 Commugny
ryfag@ryfag.ch
T +41 22 776 82 28
www.ryfag.ch

Ryf AG

Zweigniederlassung ZH
Im Hanselmaa 10
CH-8132 Egg / Uster/ZH
T +41 43 277 59 99
ryfag@ryfag.ch
www.ryfag.ch

Ryf Prototec AG

Produktion
Solithurnstrasse 3
CH-2540 Grenchen
T +41 32 652 26 42
info@ryfprototecag.ch
www.ryfprototecag.ch