



**MICROSCOPY + METROLOGY SERVICES**

Spisse made.

WE MAKE QUALITY VISIBLE.



## Welcome to the world of microscopy ...

... and welcome to the world of Ryf AG. Our wholehearted commitment to microscopy dates back to 1965; ever since then, our family firm has grown continuously, and has now developed into the market leader in the microscopy and optical measurement systems sectors.

"The best solution for you" – this is the watchword that guides our thinking and our actions, encouraging us to adopt an independent and solution-oriented approach and (most important of all) to take the long-term view. About thirty professionals (both front of house and behind the scenes) respond to the wishes and ideas of our client base, which mainly comprises industrial and research firms as well as companies in the biological, medical and educational sectors.

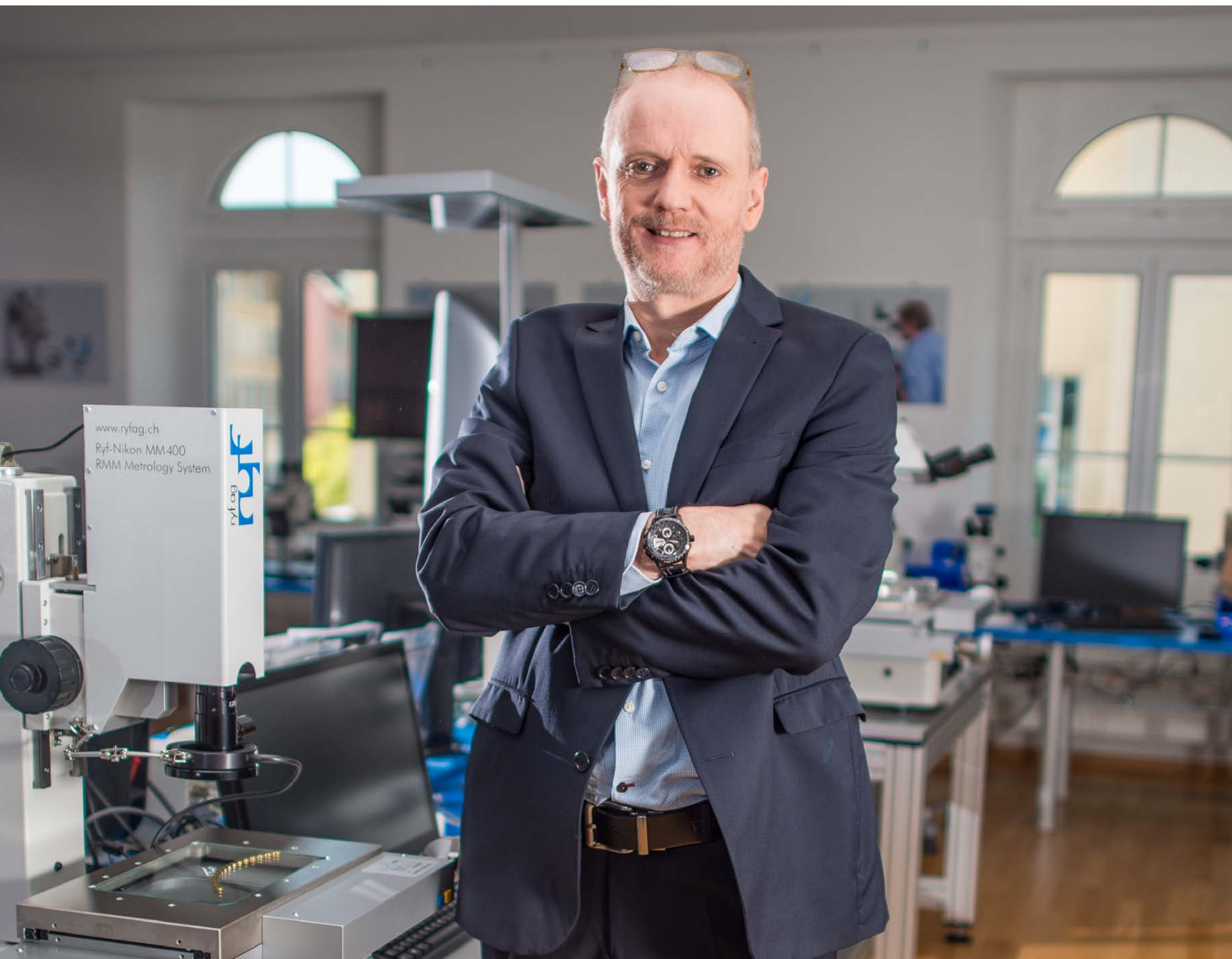
We are also your professional partner for special solutions and complex customer-specific needs; we meet these requirements by developing our own products or as representative agents for renowned brands, enabling us to offer a fully comprehensive range. Our ten service technicians have access to an inventory of 20,000 articles, and they will also make sure that you receive the best possible support in every respect after you have made your purchase.

We look forward to taking up your challenges!

Daniel Ryf  
Proprietor/Director/CEO



**1965** Bernhard Ryf founds the company, which trades in microscopes and optical instruments as well as operating a photography shop. **1972** First developments of our own in the illuminator segment. **1975** Hans Ryf becomes General Manager and takes over the company five years later. **1984-1993** Constant expansion and several changes of address because more space is needed. **1994** The firm is converted into a joint stock company (AG). **1999** Daniel Ryf, later to become CEO and proprietor, joins his parents' company. **2001** Ryf AG wins the Solothurn "Company of the Year" prize. **2003** The firm acquires the historic "Löwen-Haus" (or "Lion's House") in the city center, and carries out a complete refurbishment of the building.



**2005** marks the 40th anniversary of the Swiss market leader in optical measurement, monitoring and testing systems. **2006** Our branch in the French-speaking region of Switzerland opens at Commugny in the Canton of Vaud. **2007** Ryf AG becomes the sole Swiss distribution and service partner of Nikon AG for the industrial sector. An ERP system from SAP is introduced to manage some 20,000 articles. **2008** We become sales partner for Vision Engineering for Lynx, Kestrel, Falcon CNC and Hawk products in the French-speaking region of Switzerland. **2009** Expansion of our range of services for maintenance and repairs. **2011** We take on Nikon's CMM Coordinate Measuring Machines range for the whole of Switzerland. **2015** ISO 9001:2015 certification.

## Contents

Showroom	4 – 5
Service and repair	6 – 7
Calibration and training	8 – 9
Inspection	10 – 13
Metrology	14 – 15
Bioscience	16 – 17
Education	18 – 19
Engineering	20 – 21
Team	22 – 23
Addresses / Situation plan	24

# SHOWROOM

FOR US MICROSCOPY MEANS: ADVICE DOWN  
TO THE SMALLEST DETAIL.

Unique in Switzerland: in our extensive showroom at our headquarters in Grenchen, we present over 100 instruments and systems from a variety of manufacturers – all in actual operation. So you can take your time to get an overall (brand-neutral!) picture of the range as you compare the microscopes, test and measurement systems for yourself. We are also excellently equipped and prepared for experimental and test series.

**Ryf's consulting team is on hand to offer you advice and practical support!**



- Microscopes for industry, research and development
- Microscopes for biology and medicine
- Microscopes for education and training
- Illuminators (fiber optic/LED/glass fiber /fluorescent)
- Optical measurement systems
- Camera systems
- CNC measuring machines
- Software
- Customer-specific test and measurement systems



We have also set up a demo room in our branch at Commugny in the French-speaking region of Switzerland, showcasing the main instruments and systems (since 2007).

## Ryf's tip

To ensure that our team of advisors can devote plenty of time to you, please notify us in advance by calling us at Grenchen or Commugny. – We're looking forward to your visit!

# SERVICE & REPAIR

SERVICE EXCELLENCE REQUIRES SOMETHING THAT CANNOT BE MEASURED WITH MONEY: HONESTY AND INTEGRITY.



Ryf AG offers a modern workshop for adaptations, conversions, special production runs and inspections that cannot be carried out on site at the customer's premises.

Customers can count on maximum flexibility and reliability thanks to our investment in our SAP-controlled inventory of equipment and spare parts, comprising over 20,000 items.



We go the extra mile: Ryf AG's service and repair department is renowned for arriving rapidly on the scene whenever it is needed. Ten excellently trained service technicians travel the length and breadth of Switzerland every day in their well-equipped vehicles. Our spare parts warehouse, featuring SAP management, comprises over 20,000 items and helps to keep response times very short if a fault occurs.

**Our practical maintenance agreement with transparent and fair conditions sets the standard for the sector.**

**A selection of our services**

- Calibration to the ISO standard\*
- QA/QM reports to the ISO standard\*
- Complete cleaning
- Function checks
- Tuition and training
- Installation of software and hardware
- Repairs and adaptations
- Optimized ergonomics
- Fault service
- Replacement equipment

(\*Also see page 8)



Leading manufacturers such as Nikon select Ryf AG as their distribution and service partners for Switzerland, due in no small measure to our high level of servicing expertise.

**Ryf's tip**

As in so many other sectors, there are what claim to be "special offers" in microscopy too. However, Ryf AG is your one-stop shop for the entire package, including unbiased advice, quality equipment and professional support that continues after your purchase. And as you will see, our approach pays dividends for you!



# CALIBRATION & TRAINING

SERVICE DEFINED BY RYF: BE THE REASON SOMEONE SMILES TODAY.

Of course, there is more than a grain of truth in the casual definition of quality: "quality is when the customer comes back, not the goods." The reliability of measurement and test equipment directly impacts product quality. This means that regular calibration of instruments and systems in compliance with the current standards is indispensable for companies that are aware of their responsibilities – no matter whether or not they have a quality management system in place.

**High levels of expertise and experience are essential in order to calibrate instruments. Throughout Switzerland, Ryf AG's employees are held in high regard as specialists in calibrating virtually all brands and products.**

## A selection of our services

- Calibration with test and measurement records as per commonly applied standards
- The maintenance agreement simplifies the processes, and guarantees compliance with due dates
- Tuition, training and refresher courses (e.g. for new staff)
- Express repair service and replacement instruments
- Experience of virtually all sectors and production processes, including clean room conditions







### Ryf's tip

Our maintenance agreement offers you an elegant and convenient solution that guarantees highly reliable production and optimal cost efficiency. Your instruments are regularly serviced, cleaned, calibrated and (if you so wish) issued with inspection records by our experts on your premises, at the intervals you choose. Take advantage of this practical service – you'll find it pays off for you!

# INDUSTRIAL APPLICATIONS

QUALITY IS NOT AN ACT. IT IS A HABIT.

Product inspection and monitoring is a key aspect in the micro and macro ranges. You're sure to find that we have the right inspection equipment for optical checks, quality assessments and documentation. Ryf AG has been serving the sector for decades, and we have accumulated many years of experience with a vast range of starting materials.

**These systems can be fitted with imaging documentation equipment (cameras), and we give high priority to optimized user ergonomics at the workstation.**

## A selection from our product range

- Workstation microscopes, designed for optimal ergonomics
- Video system workstations for the macro and micro ranges
- High-power stereoscopic microscopes with high-resolution camera systems
- Software solutions, image processing, overlay measurement, image database, Kalotest, image analysis, focus depth program
- Special solutions to meet customers' requirements
- Dual discussion microscopes
- Microscope systems for materials science (metallographic microscope systems)





**Ryf accessories (Swiss Made)**

- Various specimen/slide holders
- Rotary inspection equipment
- Ryf universal stand system
- Sturdy Ryf aluminum stages for complete systems, standard or customized
- Graticules for eyepieces with precision scale divisions
- Ryf dust protection covers

**Ryf's tip**

Professional training and instruction on all systems are a matter of course at Ryf AG. Tests and technical investigations can be carried out in our own workshop. Our technicians welcome the challenge of modifying or adapting components to meet our customers' requirements!

# INDUSTRIAL APPLICATIONS

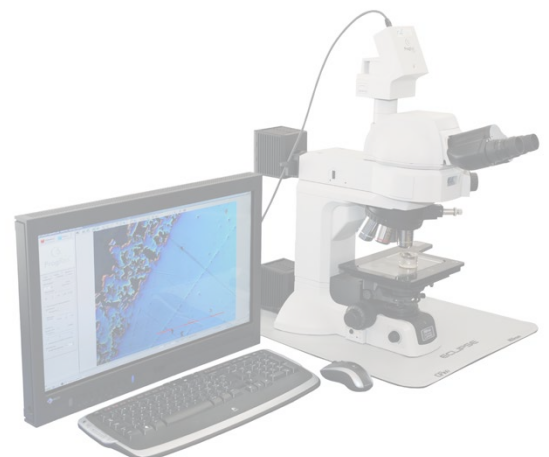
IT IS OFTEN THE LITTLE THINGS THAT MAKE IT POSSIBLE TO REALISE GREAT THINGS.

Inspecting precision parts of any type or composition poses a major challenge for quality assurance, and this is a task that has to be accomplished under widely varying conditions. Ryf AG offers you tried-and-tested systems such as stereoscopic microscopes, stereoscopic viewing systems without eyepieces and inspection via monitors (with or without a PC).

**Worth considering: the quality of an optical inspection system is determined by the weakest element that is used. Ryf AG designs systems with ideally matched components, supplied from the best manufacturers or produced by ourselves.**

#### A selection from our product range

- Stereoscopic microscopes with (specific) illuminators
- Stereoscopic microscopes with camera systems, measurement software, hardware (HP workstation)
- Large-field illuminated magnifiers
- MANTIS Vision, stereoscopic microscopes without eyepieces, with optimized ergonomics
- Microscopes with camera systems for materials science
- Software solutions, image processing, overlay measurement, image database, Kalotest, image analysis, focus depth program
- Special solutions to meet customers' requirements





**Ryf accessories (Swiss Made)**

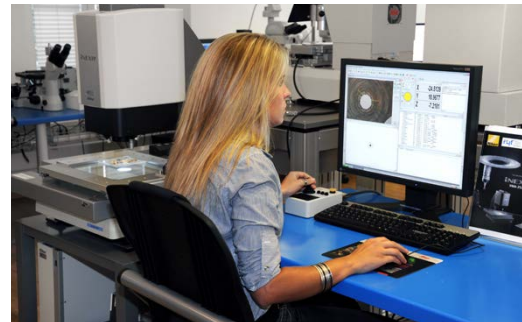
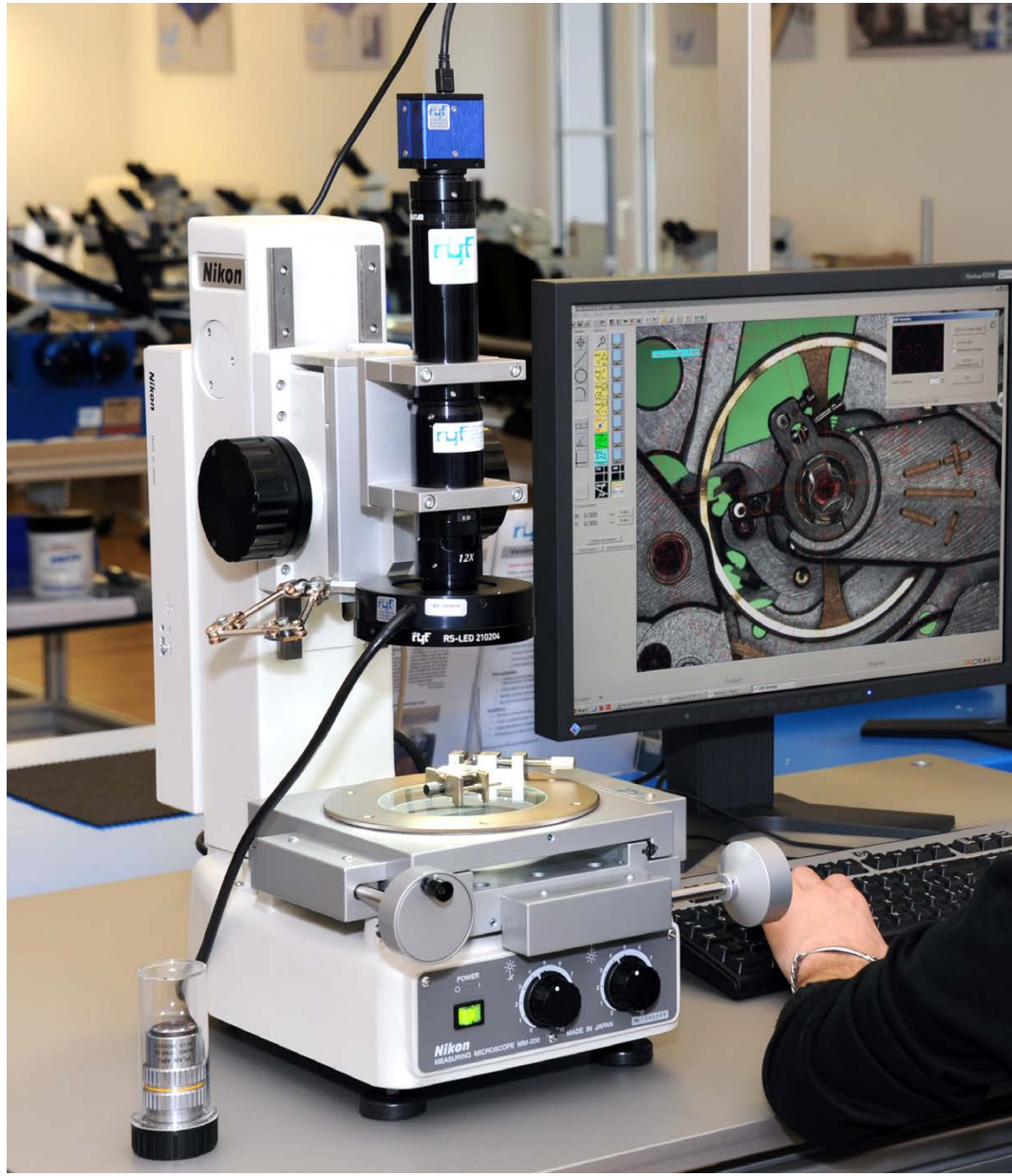
- Vast range of illuminators for stereoscopic microscopes
- Micro and macro workstations
- HF circular/linear fluorescent illuminators
- LED circular illuminators
- Light sources for glass fiber illuminators
- Ringlight illuminators and standard fiber optics (light guides)
- Customized fiber optics (light guides)

**Ryf's tip**

A sharper perspective: when it comes to production monitoring and control, the Ryf team is constantly confronted with a variety of needs and requirements in its daily work. Every production facility has its own philosophy that focuses on its specific target group. We listen to you properly, and then we deliver solutions that will impress you.

# INDUSTRIAL APPLICATIONS

QUALITY IS THE INVESTMENT WITH THE BEST RETURN.



Ryeco



HEIDENHAIN



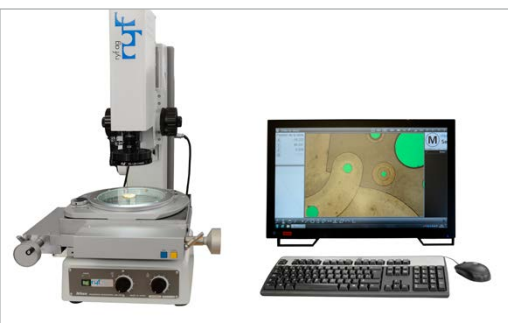


Switzerland is a byword for precision – and in this regard, Ryf AG is one of the front-runners with a host of measurement technology solutions. Our expertise ranges from simple manual industrial measuring microscopes to highly complex, fully automated 3D measurement systems tailored to our customers' requirements.

**Professionals with twenty or more years of experience, first-class components and our "one-stop shop" philosophy – these are your guarantees of the best possible return on your investment in this area too.**

#### A selection from our product range

- Manual metrology: industrial measuring microscopes and profile projectors with digital display, or QC200 / ND1200 microprocessors. With a selection of measuring stage options from 50 x 50 mm to 200 x 350 mm.
- Metrology with DXF comparison: video measurement systems (digital technology) for comparative DXF measurements (can also be retrofitted), based on the Nikon MM200/400/800 measuring microscopes with CAD Metreo or M3 software
- Measuring microscopes for materials science, for magnification of up to 2000 x
- Modified video measurement systems for specific applications
- High-precision multi-sensor CNC video measurement systems, iNexiv and Nexiv series from Nikon, with stage travel from 150 x 150 mm to 1200 x 720 mm
- Profile projectors with screen diameters from 250 mm to 600 mm, magnification range from 5 x up to 200 x
- Digimicro precision micrometers (micro-scanners)
- 3D portal measurement systems from Nikon LK / Metris, also 3D laser scanners
- QC5000 / ND5000 software, Camio multi-sensor CMM metrology software, CMM Manager metrology software and Focus point cloud software



#### Ryf Accessories (Swiss Made)

- HF circular/linear fluorescent illuminators, LED circular illuminators, light sources for glass fiber illuminators, ringlight illuminators and standard fiber optics (light guides), also customized fiber optics (light guides)
- Various specimen/slide holders
- Rotary inspection equipment
- Sturdy Ryf aluminum stages for complete systems, standard or customized
- Ryf dust protection covers
- Miniaturized precision vises
- Standard stages for profile projectors

#### Ryf's tip

One test says more than a thousand words: our demo room, with a variety of systems installed and ready to operate, is always at your disposal for test measurements (but please notify us in advance). When it comes to metrology too, the Ryf team will be glad to offer you advice and practical assistance.

# BIOSCIENCE

FOR US MICROSCOPY MEANS: ADVICE DOWN TO  
THE SMALLEST DETAIL.

There are many good reasons why numerous research institutes, development laboratories and hospitals all over Switzerland rely time and again on solutions from Ryf AG. Drawing on our considerable experience, we make every effort to ensure that you get the perfect solution to match your specific needs. And we believe that giving professional advice is more important than making a sale.

**We interpret "after-sales service" quite literally – so our extensive service organization is always available to offer training, support and maintenance.**

## A selection from our product range

- Routine microscopes for brightfield microscopy
- Microscopes featuring various microscopy methods: phase contrast, darkfield, DIC (Differential Interference Contrast), polarization and fluorescence
- High-quality microscopy with high resolution
- Microscopes with camera systems from Kappa and Jenoptik, and matching software
- Microscopes for leisure use (mycology, biology)

**Motic**  
More Than Microscopy

**Leica**  
MICROSYSTEMS

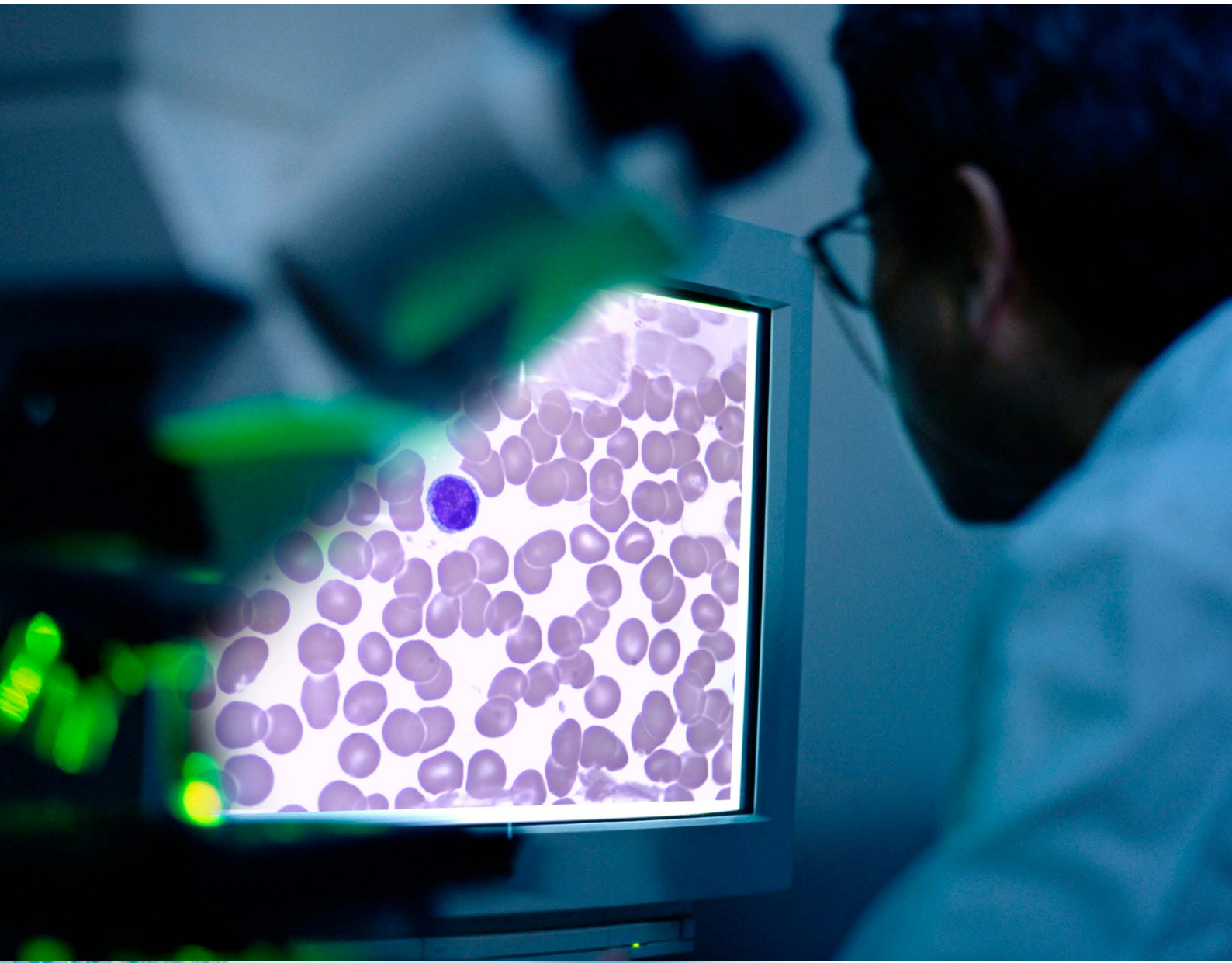
**ZEISS**

**Nikon**

**OPTIKA**







### Ryf's tip

Take advantage of our brand-neutral advice. And if you want to be sure of the very best workplace ergonomics, we shall be glad to place test instruments at your disposal so that you can trial them in your own specific working environment.

# EDUCATION

SERVICE EXCELLENCE REQUIRES SOMETHING THAT CANNOT  
BE MEASURED WITH MONEY: HONESTY AND INTEGRITY.

It's no simple matter to select a microscope system for your school or college – after all, this is an investment in the future that should pay off for many years to come! Reaching the right compromise between the available budget and the ideal product in terms of technology and quality is a difficult decision – and one which will impact the students as well.

### Ryf AG can draw on many years of experience to assist you

- We can advise you over the telephone
- We can supply a test instrument
- We offer demonstrations of different microscopes, accessories, cameras (selection system) at your own location
- You are welcome to visit our demo room so you can compare all the systems (including camera systems)
- Service: our specialists will calculate the servicing costs for your existing inventory of microscopes

### A selection from our product range

- Stereo magnifiers (stereoscopic microscopes) with built-in or built-on illuminators for reflected and transmitted light illumination
- Modern biology microscopes (with LED illuminators), specially developed for high schools
- Largest selection of stereoscopic microscopes for high schools/colleges and universities
- Cutting-edge biology microscopy systems for high schools/colleges and universities
- Various special microscopes for universities of applied sciences specializing in technology
- Complete training equipment in the macro and micro ranges for technical instruction (e.g. for training watchmakers)
- Teachers' microscopes with integrated full HD camera system for projector and LED flatscreen projection



**Motic**  
More Than Microscopy

**Leica**  
MICROSYSTEMS



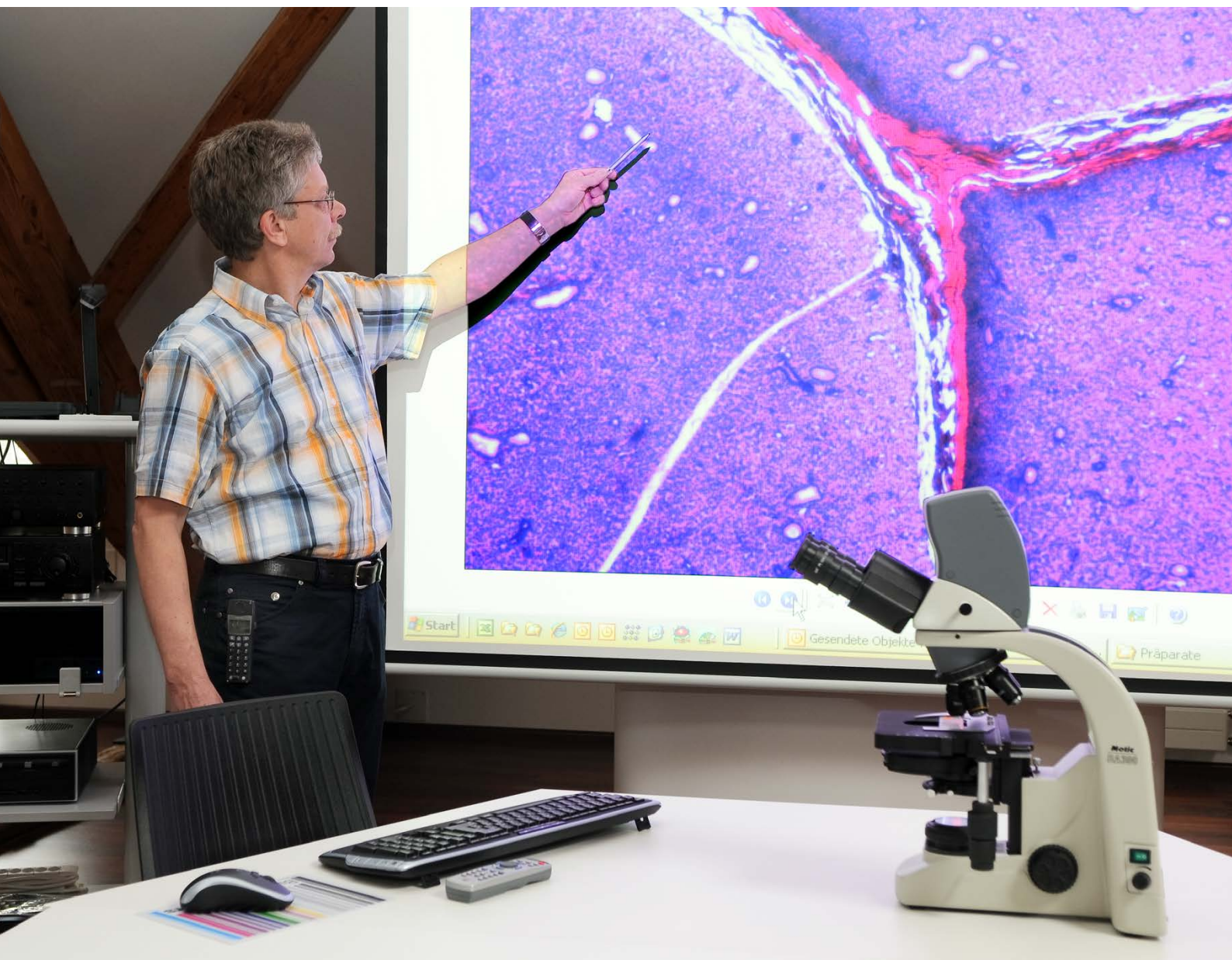
**Ryeco**



**OPTIKA**

kappa

**NOVEX**



### Ryf's tip

We can offer you attractive volume pricing for class sets. As you would expect, the equipment is inspected and delivered to you ready to operate, or we can install it directly on site. At your request, we can also provide comprehensive user training.

# ENGINEERING

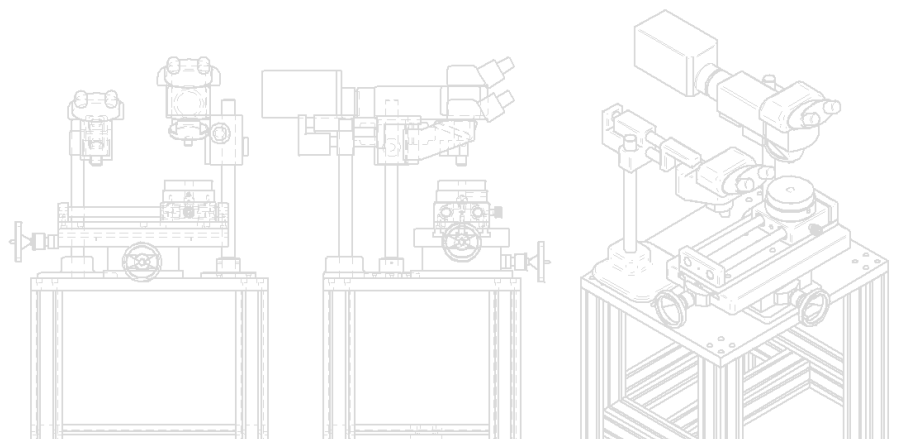
IT IS OFTEN THE LITTLE THINGS THAT MAKE IT POSSIBLE TO REALISE GREAT THINGS.

If we take a brief look back at our company's history, it's clear that the Ryfs were always to some extent the Gyro Gearlooses of the sector. Often, if something wasn't available on the market (or if it could only be bought as a poor quality product), we quickly set about developing and producing it ourselves.

**We are pleased to offer you the expertise we have built up in the world of microscopy and optical measurement systems, and to place our extensive network of long-standing product partners at your disposal.**

## A selection from our product range

- Design and individual production of holders for test specimens
- Customized solutions and our own developments when no standard solution is possible
- Project processing in close collaboration with customers
- Complex systems from one single source
- Our own mechanical test workshop
- Inhouse testing and comparison facilities at Ryf
- Professional global brands as our partners





Engineering is in our blood: Ryf AG's innovative achievements have been honored with the Solothurn "Company of the Year" prize.

### Ryf's tip

It pays dividends to discuss your ideas and visions with us at an early stage of your project. In recent years, the Ryf team has implemented numerous special solutions and developments of its own for a wide variety of sectors. – Teamwork and professionalism are our watchwords here.

# TEAM

## PEOPLE-FOCUSED SPIRIT ...



**Daniel Ryf**  
owner, CEO, head of marketing and sales, technical advice



**Philipp Bieri**  
head of engineering & IT marketing & sales, technical advise / training metrology



**Hans Ryf**  
marketing & sales, technical advise microscopes / cameras, member of the board



**Raphaël Braissant**  
marketing & sales, sales manager Commugny (VD)



**Jean-Bernard Chabloz**  
marketing & sales, technical advise / training metrology



**Karine Goranin-Spaar**  
head of after sales service



**Martina Verna**  
marketing & sales, technical advise microscopes / cameras



**Rolf Kohler**  
marketing & sales



**Corinne Schneider**  
head of finance & human resources, member of the board

### Creative ideas

"Microscopes and optical measurement systems are used in many sectors under widely differing conditions. We can often contribute creative ideas to help bring about a rapid solution to a problem. It's this variety that makes the job so challenging and exciting."

Philipp Bieri  
team leader, technology

### Made to measure

"This is the ideal job for a service buff. Management sets the standards and requirements for us, as well as providing the resources – so we can interpret "customer service" quite literally. Our customers are also highly appreciative of this philosophy."

Karine Goranin-Spaar  
team leader, service



**Thomas Müller**  
after sales service,  
team leader technical  
caretaker



**Kurt Siegenthaler**  
after sales service,  
training



**Andreas Weissbaum**  
after sales service



**Patrick Nogler**  
after sales service



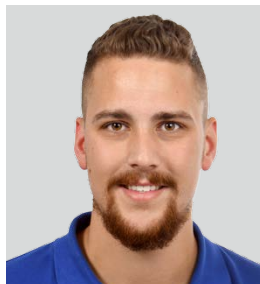
**Alex Ziehe**  
after sales service



**Olivier Moser**  
after sales service



**Antonio Vigliotti**  
after sales service



**Pascal Biedert**  
after sales service



**Jessica Megaro**  
after sales service,  
sales administration,  
bookkeeping / HR



**Manuela Weyeneth**  
sales administration,  
marketing & sales



**Olivier Isler**  
head of purchase &  
logistics, head of sales  
administration



**Renata Gunzinger**  
purchasing & logistics,  
sales administration



**Sasha Fischer**  
purchasing & logistics,  
team leader stock and  
dispatching



**Laurence Ronzel**  
sales administration



**Sonja Megaro**  
sales administration

### Sales or advice?

"Our company frowns on the hard sell. We carefully offer advice and information to open up new business on a gradual basis. We only sell something if the customer is fully convinced. Thanks to this approach, we have gained many loyal customers."

Olivier Isler  
sales

### Language barrier?

"Language barrier? Ryf AG operates throughout Switzerland – and the French-speaking region of the country is a key factor for us, given that we are the market leader. We demonstrated the priority we accord to close relations with customers by opening our branch in Commugny back in 2006."

Jean-Bernard Chabloz  
marketing & sales, technical advise /  
training metrology

Companies don't become market leaders through fine words and costly advertising campaigns – what counts is the quality of our day-to-day work. Ryf AG is proud of its employees – some of them can look back on twenty or more years with our firm – and whatever their position in the company, all of them make every effort to ensure that our customers are satisfied.



## Close to you

Our headquarters in Grenchen has an excellent strategic location in an area that is actually a conglomeration of micro-industries and businesses in the watch and clock sector, and medical technology. Numerous production firms and suppliers have chosen locations in the wider region around Grenchen, and the business centers of Zurich, Basel and Bern can be reached quickly thanks to excellent motorway connections.

Our branch at Commugny near Geneva was set up to give us a central base for Western Switzerland and the Lower Valais, covering the catchment area of Fribourg, Lausanne, Geneva and Sion. Here too, customers will find a well-equipped showroom for tests, demonstrations and service (please notify us of your visit in advance).

### Ryf AG

Bettlachstrasse 2  
CH-2540 Grenchen  
Tel. 032 654 21 00  
ryfag@ryfag.ch  
www.ryfag.ch

### Ryf SA

Succursale VD/GE  
Route de Genève 9c  
1291 Commugny  
Tél. 022 776 82 28  
www.ryfag.ch

### Ryf AG

Filiale Zürich / Ostschweiz  
Bahnhofplatz 17  
CH-8400 Winterthur  
Tel. +41 52 560 22 25  
ryfag@ryfag.ch  
www.ryfag.ch

Shop: shop.ryfag.ch



IT IS OFTEN THE LITTLE THINGS THAT MAKE IT POSSIBLE TO REALISE GREAT THINGS.